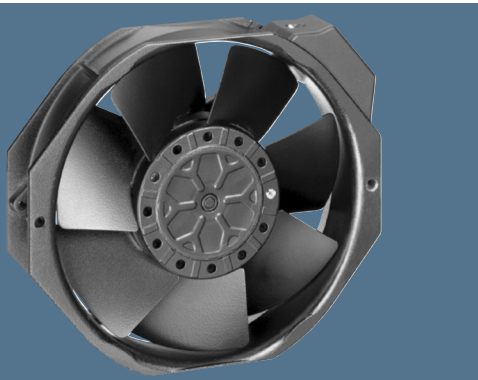


max. 380 m³/h

AC axial fans

Series 7000 150 x 172 x 38 mm



- AC fans with external rotor capacitor motor. Protected against overloading by integrated thermal cut-out.
- Metal fan housing and impeller.
- Air exhaust over struts. Direction of rotation counter-clockwise, seen on rotor.
- Electrical connection via 2 flat plugs 2.8 x 0.5 mm.
- Fan housing with grounding lug and screw M4 x 6.
- Mass: 900 g.
- Please note our new ACmaxx series. With identical mounting dimensions and voltages, this series achieves higher energy efficiency.

| Nominal data | | Air flow | Air flow | Nominal voltage | Frequency | Sound pressure level | Sound power level | Sinter sleeve bearings Ball bearings | Power input | Nominal speed | Temperature range | Service life L ₁₀ at 40 °C | at T _{max} | Curve |
|--------------|--|-------------------|----------|-----------------|-----------|----------------------|-------------------|---|-------------|---------------|-------------------|--|---------------------|-------|
| Type | | m ³ /h | CFM | V | Hz | dB(A) | Bel(A) | ■ / ■ | Watts | RPM | °C | Hours | Hours | |
| 7056 ES | | 320 | 188,3 | 230 | 50 | 51 | 6,4 | ■ | 27,0 | 2 800 | -25...+55 | 60 000 / 32 000 | | 1 |
| 7006 ES | | 380 | 223,6 | 115 | 60 | 56 | 6,8 | ■ | 28,0 | 3 350 | -25...+65 | 55 000 / 18 000 | | 2 |

Minimum ambient temperature -15 °C.

