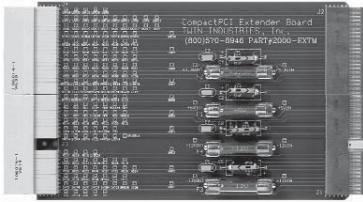


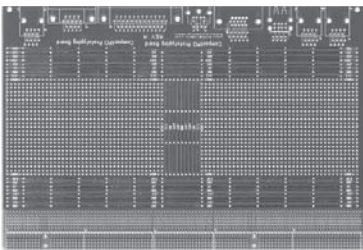
COMPACTPCI EXTENDERS-PROTOTYPING ADAPTER



P/N: ET-2000-EXTM

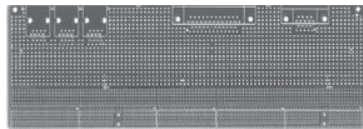
3U CompactPCI extender supports both 32 and 64 Bit transfers. Multi-layer design with full ground and power planes. All power rails fused with standard 3AG fuses.

- 3U CompactPCI extender supports both 32 and 64 bit transfers
- Multi-layer design with full ground and power planes
- Fuses easily removed for current measurements
- All signals labeled for easy scope probing
- All power rails fully de-coupled with both .1uF and 47uF capacitors
- Connectors support full shielding to maintain full CompactPCI compliance



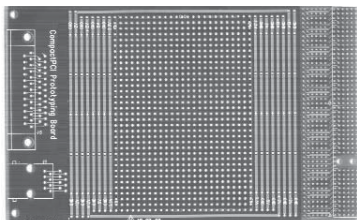
P/N: ET-2000-100-EXTM

CompactPCI prototyping board. 6U form factor with connector mounting areas for J1-5 CompactPCI connectors, RJ45, VGA, USB, PS/2, DB25, and DB9 connectors. Every connector pin has dedicated plated through hole for headers or wire soldering. Bus bars for all voltages and ground. Uncommitted area of 0.1" x 0.1" plated through holes.



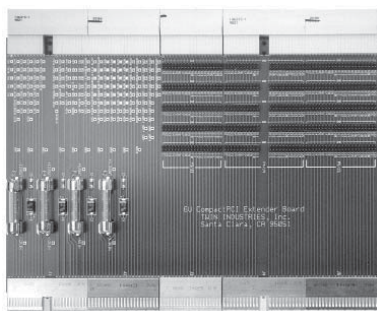
P/N: ET-2000-80-EXTM

6U, 80mm CompactPCI Rear I/O Protoboard. Locations for all CompactPCI pressfit connectors and other commonly used connectors. Bus bars and non-committed prototyping holes on 0.1" x 0.1" grid. Multilayer PCB, FR4 material.



P/N: ET-2000-50-EXTM

3U CompactPCI Protoboard. Locations for all CompactPCI pressfit connectors and other commonly used connectors. Bus bars and non-committed prototyping holes on 0.1" x 0.1" grid. Multilayer PCB, FR4 material.



P/N: ET-2000-6U-EXTM

6U CompactPCI extender supports both 32 and 64 Bit transfers. Multi-layer design with full ground and power planes.

- 6U CompactPCI extender supports both 32 and 64 bit transfers
- Multi-layer design with full ground and power planes
- All power rails fused with standard 3AG fuses
- Fuses easily removed for current measurements
- All signals labeled for easy scope probing
- All power rails fully decoupled with both .1uF and 47uF capacitors
- Connectors support full shielding to maintain full CompactPCI compliance
- Direct connect interface for logic analyzer

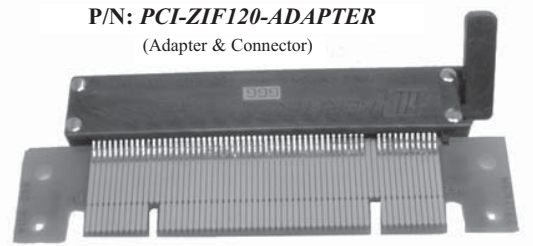
For a complete list of prototyping adapters, pricing and delivery information, please see:
Web Link: www.1800adapter.com/004

PROTOTYPING ADAPTER - COMPACTPCI EXTENDERS & PCI CONNECTORS

The ET PCI Test Connector offers the user an accurate and reliable way to test their PCI cards. With over 10,000 reliable cycles, it eliminates the need to constantly replace your PCI Connectors. The Test Connector assembly plugs directly into the PCI connector in the test bed and is actuated by a lever for easy loading and unloading of cards. Available with (PCIZIF120-A) or without (PCIZIF120-C) adapter cards to mate with standard PCI Connectors or a .062" PC board.

FEATURES & BENEFITS

- 10,000 plus cycles
- Mates to 32 Bit 3.3 and 5.0 volt standard PCI connectors
- Available with or without adapter cards to mate with standard PCI Connectors or a .062 PC board
- Custom adapter cards available upon request
- Straddle mount design allows the connector to be terminated to a test designer's own adapter card
- The lever-actuated design allows for quick and easy loading and unloading of PCI cards
- Reduces tester downtime for increased production flow
- Minimal rotation of 40 degrees of the cam accommodates the full open and closed position of the contact

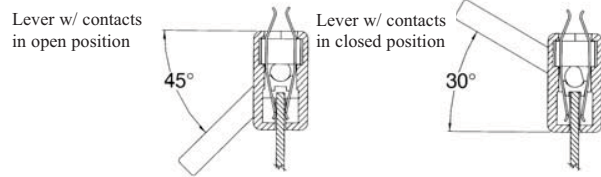


P/N: PCI-ZIF120-ADAPTER
(Adapter & Connector)



P/N: PCI-ZIF120-CONNECTOR
(Connector Only)

Electrical Specifications	
Contact Resistance	20 mOhms (max)
Dielectric withstanding voltage	1000 VAC (min)
Insulation Resistance	>1 X 10 ¹² ohms @ 500VDC
Current Rating	1.0 AMP per contact (continuous)
Mechanical Specifications	
Contact Material	Copper alloy
Number of contacts	120
Normal Force	75 grams minimum per contact
Actuation force	1 in/ob of torque
Dielectric material	Glass filled liquid crystal polymer (black)
Environmental	
Material	UL rated 94 V-O
Temperature rating	-40 degrees C to +150 degrees C



PROTOTYPING ADAPTERS, EXTENDERS & PROTOTYPING BOARDS

3U CompactPCI to 64 bit PCI passive adapter.



P/N: ET-2000-64PCI

3U CompactPCI to 64 bit PCI passive adapter with full size PCI bracket for additional support of Unit Under Test (UUT).



P/N: ET-2002-64PCI

For a complete list of prototyping adapters, pricing and delivery information, please see:
Web Link: www.1800adapter.com/004