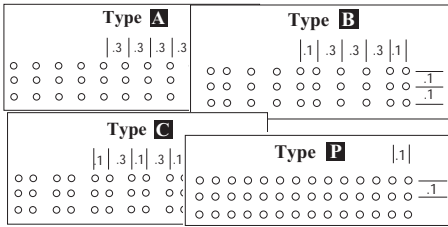


# PROTOTYPING ADAPTERS - FULLY ASSEMBLED & TESTED

## Prototyping PC Board Configurations



- P5= PGA 8X8            P10= PGA 17X17        P19= PGA 26X26
- P6= PGA 9X9            P11= PGA 18X18        P20= PGA 27x27
- P2= PGA 10X10        P12= PGA 19X19        P21= PGA 28X28
- P1= PGA 11X11        P13= PGA 20X20        P22= PGA 29x29
- P7= PGA 12X12        P14= PGA 21X21        P23= PGA 30X30
- P3= PGA 13X13        P15= PGA 22X22        P24= PGA 31X31
- P8= PGA 14X14        P16= PGA 23X23        P25= PGA 32X32
- P4= PGA 15X15        P17= PGA 24X24        P26= PGA 33x33
- P9= PGA 16X16        P18= PGA 25X25        P27= PGA 34x34

## Ordering Information Example

Pin Count \_\_\_\_\_ Prototyping PC Board Configurations (see below)

Product Code \_\_\_\_\_ AB-120-QF05 (Z)-P10-M-(1)

Chip Pkg Socket Footprint \_\_\_\_\_

Top Socket Configurations \_\_\_\_\_

CQFP & PQFP only:

S = SMT Pads  
P = Production  
Z = ZIF Socket

Optional:  
1 = Socket Included  
0 = Socket Not Included

Bottom Male Pin Type:  
M = Screw Machine Pin  
W = Wire Wrap Post

*For a complete list of prototyping adapter specifications, pricing and delivery information, please see*

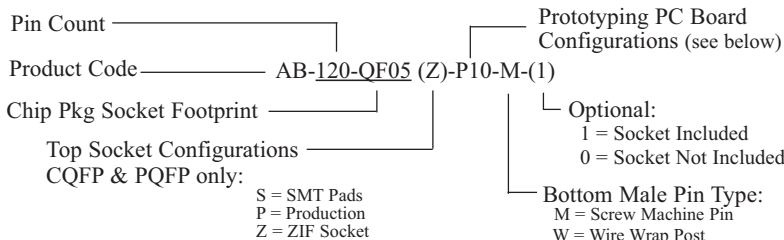
**Web Link: [www.1800adapter.com/004](http://www.1800adapter.com/004)**

## PQFP/TQFP

Pin Count	Lead Pitch (mm)	Tip-to-Tip mm (sq.)	Adapter Top Female Configuration	Bottom Pin Type	Bottom Configuration Type	Adapter Bottom Male Configuration	ET Part #	Drawing #
32	0.80	9.00	Zero Insertion Socket	Screw Machine	Q16	A	AB-032-QF59DZ-A-M	F4000
32	0.80	9.00	Zero Insertion Socket	Wire Wrap	Q16	A	AB-032-QF59DZ-A-W	F6017
44	0.80	12.00 - 13.90	Surface Mount	Wire Wrap	Q16	A & B	AB-044-QF16S-A/B-W	F2691
44	0.80	12.00 - 13.90	Surface Mount	Screw Machine	Q16	C	AB-044-QF16S-C-M	F2692
44	0.80	12.00 - 13.90	Surface Mount	Wire Wrap	Q16	C	AB-044-QF16S-C-W	F2693
44	0.80	12.00 - 13.90	Surface Mount	Screw Machine	Q16	8X8 PGA Grid	AB-044-QF16S-P5-M	F2694
44	0.80	12.00 - 13.90	Surface Mount	Wire Wrap	Q16	8X8 PGA Grid	AB-044-QF16S-P5-W	F2695
44	0.80	13.20 - 13.90	Zero Insertion Socket	Screw Machine	Q16A/B	8X8 PGA Grid	AB-044-QF16A/BZ-P5-M-1	F2700
44	0.80	13.20 - 13.90	Zero Insertion Socket	Wire Wrap	Q16A/B	8X8 PGA Grid	AB-044-QF16A/BZ-P5-W-1	F2701
44	0.80	12.00 - 13.90	Surface Mount	Screw Machine	Q16	A & B	AB-044-QF16S-A/B-M	F2690
44	0.80	13.20	Zero Insertion Socket	Screw Machine	Q16B	A	AB-044-QF16BZ-A-M-1	F2697
44	0.80	13.20	Zero Insertion Socket	Wire Wrap	Q16B	A	AB-044-QF16BZ-A-W-1	F2699
44	0.80	12.60	Zero Insertion Socket	Screw Machine	Q16C	11X11 PGA Grid	AB-044-QF16CZ-P1-M-1	F4418
44	0.80	12.60	Zero Insertion Socket	Wire Wrap	Q16C	11X11 PGA Grid	AB-044-QF16CZ-P1-W-1	F4420
44	0.80	12.60	Zero Insertion Socket	Wire Wrap	Q16C	11X11 PGA Grid	AB-044-QF16CZ-P1-W-1	F4420
44	0.80	12.00	Zero Insertion Socket	Screw Machine	Q16D	8X8 PGA Grid	AB-044-QF16DZ-P5-M-1	F5793
44	0.80	12.00	Zero Insertion Socket	Wire Wrap	Q16D	8X8 PGA Grid	AB-044-QF16DZ-P5-W-1	F59F4
48	0.50	9.00 - 10.90	Surface Mount	Screw Machine	Q50	C	AB-048-QF50S-C-M	F4188
48	0.50	9.00 - 10.90	Surface Mount	Wire Wrap	Q50	C	AB-048-QF50S-C-W	F4505
48	0.50	9.00	Zero Insertion Socket	Screw Machine	50D	C	AB-048-QF50DZ-C-M-1	F5060
48	0.50	9.00	Zero Insertion Socket	Wire Wrap	50D	C	AB-048-QF50DZ-C-W-1	F5061
52	0.65	12.00 - 13.90	Surface Mount	Screw Machine	Q39	9X9 PGA Grid	AB-052-QF39S-P6-M	F1484
52	0.65	12.00 - 13.90	Surface Mount	Wire Wrap	Q39	9X9 PGA Grid	AB-052-QF39S-P6-W	F1483
52	0.65	13.90	Zero Insertion Socket	Screw Machine	Q39A	9X9 PGA Grid	AB-052-QF39AZ-P6-M-1	F4511
52	0.65	13.90	Zero Insertion Socket	Wire Wrap	Q39A	9X9 PGA Grid	AB-052-QF39AZ-P6-W-1	F2725
52	0.65	13.20	Zero Insertion Socket	Screw Machine	Q39B	9X9 PGA Grid	AB-052-QF39BZ-P6-M-1	F5541
52	0.65	13.20	Zero Insertion Socket	Wire Wrap	Q39B	9X9 PGA Grid	AB-052-QF39BZ-P6-W-1	F5542
52	0.65	12.00	Zero Insertion Socket	Screw Machine	Q39D	9X9 PGA Grid	AB-052-QF39DZ-P6-M-1	F4189
52	1.00	16.00 - 17.90	Surface Mount	Screw Machine	Q37	9X9 PGA Grid	AB-052-QF37S-P6-M	F2722
52	1.00	16.00 - 17.90	Surface Mount	Wire Wrap	Q37	9X9 PGA Grid	AB-052-QF37S-P6-W	F2723
52	1.00	16.00	Zero Insertion Socket	Screw Machine	Q37D	10X10 PGA Grid	AB-052-QF37DZ-P2-M-1	F5714
64	0.50	12.00 - 13.90	Surface Mount	Screw Machine	Q64	A	AB-064-QF64S-A-M	F5F13
64	0.50	12.00 - 13.90	Surface Mount	Wire Wrap	Q64	A	AB-064-QF64S-A-W	F6095
64	0.50	23.20/17.20	Surface Mount	Wire Wrap	Q9B	15X15 PGA Grid	AB-064-QF09BZ-P4-W-1	F6918
64	0.50	12.00	Zero Insertion Socket	Screw Machine	64D	A	AB-064-QF64DZ-A-M-1	F2748
64	0.50	12.00	Zero Insertion Socket	Wire Wrap	64D	A	AB-064-QF64DZ-A-W-1	F4422
64	0.50	23.20/17.20	Zero Insertion Socket	Screw Machine	Q9B	15X15 PGA Grid	AB-064-QF09BZ-P4-M-1	F2746
64	0.80	16.00 - 17.90	Surface Mount	Screw Machine	Q29	A	AB-064-QF29S-A-M	F3858
64	0.80	16.00 - 17.90	Surface Mount	Wire Wrap	Q29	A	AB-064-QF29S-A-W	F4513
64	0.80	16.00 - 17.90	Surface Mount	Screw Machine	Q29	B	AB-064-QF29S-B-M	F3929
64	0.80	16.00 - 17.90	Surface Mount	Wire Wrap	Q29	B	AB-064-QF29S-B-W	F4514
64	0.80	17.20	Zero Insertion Socket	Screw Machine	Q29B	C	AB-064-QF29BZ-C-M-1	F2747
64	0.80	17.20	Zero Insertion Socket	Wire Wrap	Q29B	C	AB-064-QF29BZ-C-W-1	F4159
64	0.80	16.00	Zero Insertion Socket	Screw Machine	Q29D	C	AB-064-QF29DZ-C-M-1	F4093
64	0.80	16.00	Zero Insertion Socket	Wire Wrap	Q29D	C	AB-064-QF29DZ-C-W-1	F1722
64	1.00	23.20/17.20 - 23.90/17.90	Zero Insertion Socket	Screw Machine	Q9A/B	15X15 PGA Grid	AB-064-QF09A/BZ-P4-M-1	F1726
64	1.00	23.20/17.20 - 23.90/17.90	Zero Insertion Socket	Wire Wrap	Q9A/B	15X15 PGA Grid	AB-064-QF09A/BZ-P4-W-1	F1727
64	1.00	22.00/16.00 - 23.90/17.90	Surface Mount	Screw Machine	Q9	A & B	AB-064-QF09S-A/B-M	F2740
64	1.00	22.00/16.00 - 23.90/17.90	Surface Mount	Wire Wrap	Q9	A & B	AB-064-QF09S-A/B-W	F2741
64	1.00	22.00/16.00 - 23.90/17.90	Surface Mount	Screw Machine	Q9	C	AB-064-QF09S-C-M	F2742

# FULLY ASSEMBLED & TESTED - PROTOTYPING ADAPTERS

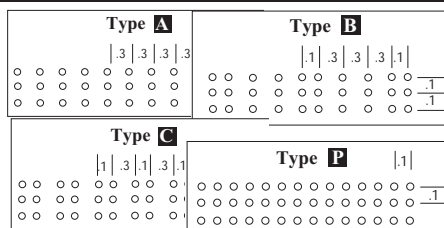
## Ordering Information Example



For a complete list of prototyping adapter specifications, pricing and delivery information, please see

Web Link: [www.1800adapter.com/004](http://www.1800adapter.com/004)

## Prototyping PC Board Configurations



- P5= PGA 8X8
- P6= PGA 9X9
- P2= PGA 10X10
- P1= PGA 11X11
- P7= PGA 12X12
- P3= PGA 13X13
- P8= PGA 14X14
- P4= PGA 15X15
- P9= PGA 16X16
- P10= PGA 17X17
- P11= PGA 18X18
- P12= PGA 19X19
- P13= PGA 20X20
- P14= PGA 21X21
- P15= PGA 22X22
- P16= PGA 23X23
- P17= PGA 24X24
- P18= PGA 25X25
- P19= PGA 26X26
- P20= PGA 27x27
- P21= PGA 28X28
- P22= PGA 29x29
- P23= PGA 30X30
- P24= PGA 31X31
- P25= PGA 32X32
- P26= PGA 33x33
- P27= PGA 34x34

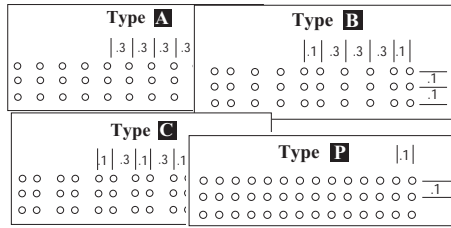
## PQFP/TQFP (cont.)

Pin Count	Lead Pitch (mm)	Tip-to-Tip mm (sq.)	Adapter Top Female Configuration	Bottom Pin Type	Bottom Configuration Type	Adapter Bottom Male Configuration	ET Part #	Drawing #
64	1.00	22.00/16.00 - 23.90/17.90	Surface Mount	Screw Machine	Q9	C	AB-064-QF09S-C-M	F2742
64	1.00	22.00/16.00 - 23.90/17.90	Surface Mount	Wire Wrap	Q9	C	AB-064-QF09S-C-W	F2743
64	1.00	22.00/16.00 - 23.90/17.90	Surface Mount	Screw Machine	Q9	12X12 PGA Grid	AB-064-QF09S-P7-M	F2744
64	1.00	22.00/16.00 - 23.90/17.90	Surface Mount	Wire Wrap	Q9	12X12 PGA Grid	AB-064-QF09S-P7-W	F2745
80	0.50	14.00 - 15.90	Surface Mount	Screw Machine	Q47	11X11 PGA Grid	AB-080-QF47S-P1-M	F1813
80	0.50	14.00	Surface Mount	Screw Machine	Q47D	13X13 PGA Grid	AB-080-QF47DZ-P3-M-1	F4190
80	0.50	14.00	Surface Mount	Wire Wrap	Q47D	13X13 PGA Grid	AB-080-QF47DZ-P3-W-1	F5941
80	0.50	14.00 - 15.90	Surface Mount	Wire Wrap	Q47S	11X11 PGA Grid	AB-080-QF47S-P1-W	F1814
80	0.65	16.00 - 17.90	Surface Mount	Screw Machine	Q14	11X11 PGA Grid	AB-080-QF14S-P1-M	F2782
80	0.65	16.00 - 17.90	Surface Mount	Wire Wrap	Q14	11X11 PGA Grid	AB-080-QF14S-P1-W	F2783
80	0.65	17.20	Surface Mount	Screw Machine	Q14B	C	AB-080-QF14BZ-C-M-1	F1330
80	0.65	17.20	Surface Mount	Wire Wrap	Q14B	C	AB-080-QF14BZ-C-W-1	F2785
80	0.65	17.20	Surface Mount	Screw Machine	Q14B	13X13 PGA Grid	AB-080-QF14BZ-P3-M-1	F5555
80	0.65	17.20	Surface Mount	Wire Wrap	Q14B	13X13 PGA Grid	AB-080-QF14BZ-P3-W-1	F6094
80	0.65	16.00	Surface Mount	Screw Machine	Q14D	12X12 PGA Grid	AB-080-QF14DZ-P7-M-1	F4282
80	0.65	16.00	Surface Mount	Wire Wrap	Q14D	12X12 PGA Grid	AB-080-QF14DZ-P7-W-1	F5627
80	0.80	22.00/16.00 - 23.90/17.90	Surface Mount	Screw Machine	Q8	A	AB-080-QF08S-A-M	F2773
80	0.80	22.00/16.00 - 23.90/17.90	Surface Mount	Wire Wrap	Q8	A	AB-080-QF08S-A-W	F2774
80	0.80	22.00/16.00 - 23.90/17.90	Surface Mount	Screw Machine	Q8	B	AB-080-QF08S-B-M	F2775
80	0.80	22.00/16.00 - 23.90/17.90	Surface Mount	Screw Machine	Q8	C	AB-080-QF08S-C-M	F2777
80	0.80	22.00/16.00 - 23.90/17.90	Surface Mount	Screw Machine	Q8	14X14 PGA Grid	AB-080-QF08S-P8-M	F2779
80	0.80	22.00/16.00 - 23.90/17.90	Surface Mount	Wire Wrap	Q8	14X14 PGA Grid	AB-080-QF08S-P8-W	F2780
80	0.80	23.90/17.90	Zero Insertion Socket	Screw Machine	8A	15X15 PGA Grid	AB-080-QF08AZ-P4-M-1	F1230
80	0.80	23.90/17.90	Zero Insertion Socket	Wire Wrap	8A	15X15 PGA Grid	AB-080-QF08AZ-P4-W-1	F1231
100	0.50	16.00 - 17.90	Surface Mount	Screw Machine	Q49	13X13 PGA Grid	AB-100-QF49S-P3-M	F1815
100	0.50	16.00 - 17.90	Surface Mount	Wire Wrap	Q49	13X13 PGA Grid	AB-100-QF49S-P3-W	F1816
100	0.50	16.00	Zero Insertion Socket	Screw Machine	49D	17X17 PGA Grid	AB-100-QF49DZ-P10-M-1	F4295
100	0.50	16.00	Zero Insertion Socket	Wire Wrap	49D	17X17 PGA Grid	AB-100-QF49DZ-P10-W-1	F6919
100	0.50	16.00	Zero Insertion Socket	Screw Machine	49D	13X13 PGA Grid	AB-100-QF49DZ-P3-M-1	F2271
100	0.50	16.00	Zero Insertion Socket	Wire Wrap	49D	13X13 PGA Grid	AB-100-QF49DZ-P3-W-1	F2878
100	0.65	22.00/16.00 - 23.90/17.90	Surface Mount	Screw Machine	Q6	A	AB-100-QF06S-A-M	F2855
100	0.65	22.00/16.00 - 23.90/17.90	Surface Mount	Wire Wrap	Q6	A	AB-100-QF06S-A-W	F2856
100	0.65	22.00/16.00 - 23.90/17.90	Surface Mount	Screw Machine	Q6	B	AB-100-QF06S-B-M	F2857
100	0.65	22.00/16.00 - 23.90/17.90	Surface Mount	Wire Wrap	Q6	B	AB-100-QF06S-B-W	F2858
100	0.65	22.00/16.00 - 23.90/17.90	Surface Mount	Screw Machine	Q6	C	AB-100-QF06S-C-M	F2859
100	0.65	22.00/16.00 - 23.90/17.90	Surface Mount	Wire Wrap	Q6	C	AB-100-QF06S-C-W	F2860
100	0.65	22.00/16.00 - 23.90/17.90	Surface Mount	Screw Machine	Q6	14X14 PGA Grid	AB-100-QF06S-P8-M	F2861
100	0.65	22.00/16.00 - 23.90/17.90	Surface Mount	Wire Wrap	Q6	14X14 PGA Grid	AB-100-QF06S-P8-W	F2862
100	0.65	23.20/17.20 - 23.90/17.90	Zero Insertion Socket	Screw Machine	Q6A/B	A & B	AB-100-QF06A/BZ-A-M-1	F2863
100	0.65	23.20/17.20 - 23.90/17.90	Zero Insertion Socket	Screw Machine	Q6A/B	A & B	AB-100-QF06A/BZ-A-W-1	F2865
100	0.65	23.20/17.20 - 23.90/17.90	Zero Insertion Socket	Screw Machine	Q6A/B	A & B	AB-100-QF06A/BZ-C-M-1	F2868
100	0.65	23.20/17.20 - 23.90/17.90	Zero Insertion Socket	Wire Wrap	Q6A/B	A & B	AB-100-QF06A/BZ-C-W-1	F2870
100	0.65	23.20/17.20 - 23.90/17.90	Zero Insertion Socket	Screw Machine	Q6A/B	14X14 PGA Grid	AB-100-QF06A/BZ-P8-M-1	F1789
100	0.65	23.20/17.20 - 23.90/17.90	Zero Insertion Socket	Wire Wrap	Q6A/B	14X14 PGA Grid	AB-100-QF06A/BZ-P8-W-1	F2873
100	0.65	22.00/16.00	Zero Insertion Socket	Screw Machine	Q6D	14X14 PGA Grid	AB-100-QF06DZ-P8-M-1	F4423
100	0.65	22.00/16.00	Zero Insertion Socket	Wire Wrap	Q6D	14X14 PGA Grid	AB-100-QF06DZ-P8-W-1	F6159
100	.025"	.880"	Surface Mount	Screw Machine	Q1	15X15 PGA Grid	AB-100-QF01S-P4-M	F1240
112	0.65	23.20	Zero Insertion Socket	Wire Wrap	Q36B	15X15 PGA Grid	AB-112-QF36BZ-P4-W-1	F2052

PROTOTYPING ADAPTERS, EXTENDERS & PROTOTYPING BOARDS

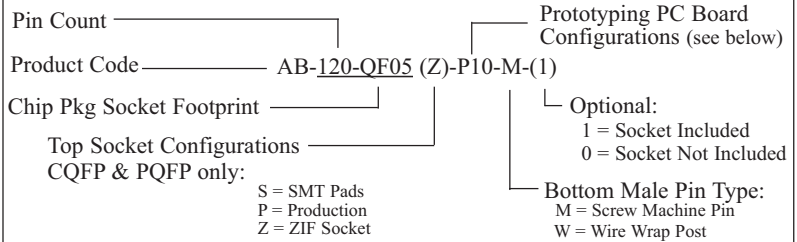
# PROTOTYPING ADAPTERS - FULLY ASSEMBLED & TESTED

## Prototyping PC Board Configurations



- P5= PGA 8X8      P10= PGA 17X17      P19= PGA 26X26
- P6= PGA 9X9      P11= PGA 18X18      P20= PGA 27x27
- P2= PGA 10X10    P12= PGA 19X19      P21= PGA 28X28
- P1= PGA 11X11    P13= PGA 20X20      P22= PGA 29x29
- P7= PGA 12X12    P14= PGA 21X21      P23= PGA 30X30
- P3= PGA 13X13    P15= PGA 22X22      P24= PGA 31X31
- P8= PGA 14X14    P16= PGA 23X23      P25= PGA 32X32
- P4= PGA 15X15    P17= PGA 24X24      P26= PGA 33x33
- P9= PGA 16X16    P18= PGA 25X25      P27= PGA 34x34

## Ordering Information Example



For a complete list of prototyping adapter specifications, pricing and delivery information, please see

**Web Link: [www.1800adapter.com/004](http://www.1800adapter.com/004)**

## PQFP/TQFP (cont.)

Pin Count	Lead Pitch (mm)	Tip-to-Tip mm (sq.)	Adapter Top Female Configuration	Bottom Pin Type	Bottom Configuration Type	Adapter Bottom Male Configuration	ET Part #	Drawing #
112	0.65	22.00	Zero Insertion Socket	Screw Machine	Q36D	15X15 PGA Grid	AB-112-QF36DZ-P4-M-0	F6361
112	0.65	22.00	Zero Insertion Socket	Screw Machine	Q36D	15X15 PGA Grid	AB-112-QF36DZ-P4-M-1	F6362
120	0.80	30.00 - 31.90	Surface Mount	Screw Machine	Q5	15X15 PGA Grid	AB-120-QF05S-P4-M	F2891
120	0.80	30.00 - 31.90	Surface Mount	Wire Wrap	Q5	15X15 PGA Grid	AB-120-QF05S-P4-W	F2892
120	0.80	16.00 - 17.90	Surface Mount	Screw Machine	Q56	12X12 PGA Grid	AB-120-QF56S-P7-M	F6026
120	0.80	16.00 - 17.90	Surface Mount	Wire Wrap	Q56	12X12 PGA Grid	AB-120-QF56S-P7-W	F6096
120	0.80	17.90	Zero Insertion Socket	Screw Machine	Q5A	17X17 PGA Grid	AB-120-QF05AZ-P10-M-1	F1696
120	0.80	17.90	Zero Insertion Socket	Wire Wrap	Q5A	17X17 PGA Grid	AB-120-QF05AZ-P10-W-1	F2895
128	0.40	16.00	Zero Insertion Socket	Screw Machine	Q57	24X24 PGA Grid	AB-128-QF57DZ-P17-M-0	F6849
128	0.50	22.00/16.00 - 23.90/17.90	Surface Mount	Screw Machine	Q51	13X13 PGA Grid	AB-128-QF51S-P3-M	F4427
128	0.50	22.00/16.00 - 23.90/17.90	Surface Mount	Wire Wrap	Q51	13X13 PGA Grid	AB-128-QF51S-P3-W	F5066
128	0.50	23.20/17.20 - 23.90/17.90	Zero Insertion Socket	Screw Machine	Q51A/B	18X18 PGA Grid	AB-128-QF51A/BZ-P11-M-1	F2916
128	0.50	23.20/17.20 - 23.90/17.90	Zero Insertion Socket	Wire Wrap	Q51A/B	18X18 PGA Grid	AB-128-QF51A/BZ-P11-W-1	F4428
128	0.50	23.20/17.20	Zero Insertion Socket	Screw Machine	Q51B	18X18 PGA Grid	AB-128-QF51BZ-P18-M-1	F5543
128	0.50	22.00/16.00	Zero Insertion Socket	Screw Machine	Q51D	18X18 PGA Grid	AB-128-QF51DZ-P18-M-1	F5930
128	0.50	22.00/16.00	Zero Insertion Socket	Wire Wrap	Q51D	18X18 PGA Grid	AB-128-QF51DZ-P18-W-1	F4078
128	0.50	16.00	Zero Insertion Socket	Screw Machine	Q57D	24X24 PGA Grid	AB-128-QF57DZ-P17-M-1	F6620
128	0.50	16.00	Zero Insertion Socket	Wire Wrap	Q57D	24X24 PGA Grid	AB-128-QF57DZ-P17-W-1	F6619
128	0.80	31.46 - 31.90	Surface Mount	Screw Machine	Q13	A	AB-128-QF13S-A-M	F2902
128	0.80	31.46 - 31.90	Surface Mount	Wire Wrap	Q13	A	AB-128-QF13S-A-W	F2903
128	0.80	31.46 - 31.90	Surface Mount	Screw Machine	Q13	15X15 PGA Grid	AB-128-QF13S-P4-M	F2906
128	0.80	31.46 - 31.90	Surface Mount	Wire Wrap	Q13	15X15 PGA Grid	AB-128-QF13S-P4-W	F2907
128	0.80	31.90	Zero Insertion Socket	Screw Machine	Q13A	17X17 PGA Grid	AB-128-QF13AZ-P10-M-1	F2909
128	0.80	31.90	Zero Insertion Socket	Wire Wrap	Q13A	17X17 PGA Grid	AB-128-QF13AZ-P10-W-1	F2911
128	0.80	31.90	Zero Insertion Socket	Screw Machine	Q13A	19X19 PGA Grid	AB-128-QF13AZ-P12-M-1	F2913
128	0.80	31.90	Zero Insertion Socket	Wire Wrap	Q13A	19X19 PGA Grid	AB-128-QF13AZ-P12-W-1	F2915
128	0.80	31.20	Zero Insertion Socket	Wire Wrap	Q13B	17X17 PGA Grid	AB-128-QF13BZ-P10-W-1	F4426
132	.025"	1.080"	Surface Mount	Screw Machine	Q3	17X17 PGA Grid	AB-132-QF03S-P10-M	F1121
132	.025"	1.080"	Surface Mount	Wire Wrap	Q3	17X17 PGA Grid	AB-132-QF03S-P10-W	F2923
132	.025"	1.080"	Zero Insertion Socket	Screw Machine	Q3	18X18 PGA Grid	AB-132-QF03Z-P11-M-1	F1317
132	.025"	1.080"	Zero Insertion Socket	Wire Wrap	Q3	18X18 PGA Grid	AB-132-QF03Z-P11-W-1	F1318
132	.025"	1.080"	Production Socket	Screw Machine	Q3A	A	AB-132-QF03A-A-M	F2921
132	.025"	1.080"	Production Socket	Wire Wrap	Q3A	A	AB-132-QF03A-A-W	F2922
132	.025"	1.080"	Production Socket	Screw Machine	Q3A	C	AB-132-QF03A-C-M	F3797
132	.025"	1.080"	Production Socket	Wire Wrap	Q3A	C	AB-132-QF03A-C-W	F3798
144	0.50	22.00 - 23.90	Surface Mount	Screw Machine	Q63	19X19 PGA Grid	AB-144-QF63S-P12H-M	F1945
144	0.50	22.00 - 23.90	Surface Mount	Wire Wrap	Q63	19X19 PGA Grid	AB-144-QF63S-P12H-W	F1946
144	0.50	22.00 - 23.90	Surface Mount	Screw Machine	Q63	16X16 PGA Grid	AB-144-QF63S-P9-M	F2170
144	0.50	22.00 - 23.90	Surface Mount	Wire Wrap	Q63	16X16 PGA Grid	AB-144-QF63S-P9-W	F2187
144	0.50	22.00	Zero Insertion Socket	Screw Machine	Q63D	17X17 PGA Grid	AB-144-QF63DZ-P10-M-1	F2096
144	0.50	22.00	Zero Insertion Socket	Screw Machine	Q63D	17X17 PGA Grid	AB-144-QF63DZ-P10-M-1	F4430
144	0.50	22.00	Zero Insertion Socket	Wire Wrap	Q63D	17X17 PGA Grid	AB-144-QF63DZ-P10-W-1	F2958
144	0.65	30.00 - 31.90	Surface Mount	Screw Machine	Q10	17X17 PGA Grid	AB-144-QF10S-P10-M	F2946
144	0.65	30.00 - 31.90	Surface Mount	Wire Wrap	Q10	17X17 PGA Grid	AB-144-QF10S-P10-W	F2947
144	0.65	31.20	Zero Insertion Socket	Screw Machine	Q10B	A	AB-144-QF10BZ-A-M-1	F2949
144	0.65	31.20	Zero Insertion Socket	Wire Wrap	Q10B	A	AB-144-QF10BZ-A-W-1	F2951
144	0.65	31.20	Zero Insertion Socket	Screw Machine	Q10B	19X19 PGA Grid	AB-144-QF10BZ-P12-M-1	F1796

# FULLY ASSEMBLED & TESTED - PROTOTYPING ADAPTERS

## Ordering Information Example

Pin Count \_\_\_\_\_ Prototyping PC Board Configurations (see below)  
 Product Code \_\_\_\_\_ AB-120-QF05 (Z)-P10-M-(1)  
 Chip Pkg Socket Footprint \_\_\_\_\_  
 Top Socket Configurations \_\_\_\_\_  
 CQFP & PQFP only:  
 S = SMT Pads  
 P = Production  
 Z = ZIF Socket

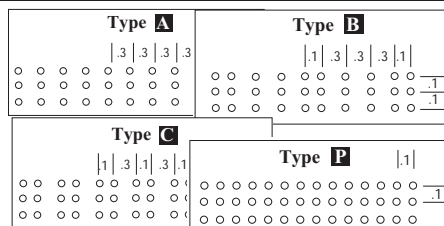
Optional:  
 1 = Socket Included  
 0 = Socket Not Included

Bottom Male Pin Type:  
 M = Screw Machine Pin  
 W = Wire Wrap Post

For a complete list of prototyping adapter specifications, pricing and delivery information, please see

Web Link: [www.1800adapter.com/004](http://www.1800adapter.com/004)

## Prototyping PC Board Configurations



P5= PGA 8X8	P10= PGA 17X17	P19= PGA 26X26
P6= PGA 9X9	P11= PGA 18X18	P20= PGA 27x27
P2= PGA 10X10	P12= PGA 19X19	P21= PGA 28X28
P1= PGA 11X11	P13= PGA 20X20	P22= PGA 29x29
P7= PGA 12X12	P14= PGA 21X21	P23= PGA 30X30
P3= PGA 13X13	P15= PGA 22X22	P24= PGA 31X31
P8= PGA 14X14	P16= PGA 23X23	P25= PGA 32X32
P4= PGA 15X15	P17= PGA 24X24	P26= PGA 33x33
P9= PGA 16X16	P18= PGA 25X25	P27= PGA 34x34

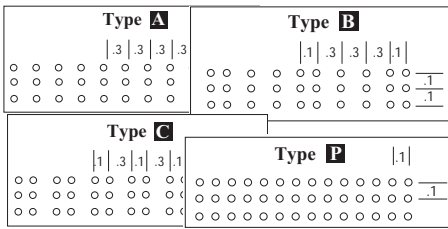
## PQFP/TQFP (cont.)

Pin Count	Lead Pitch (mm)	Tip-to-Tip (mm)	Adapter Top Female Configuration	Bottom Pin Type	Bottom Configuration Type	Adapter Bottom Male Configuration	ET Part #	Drawing #
144	0.65	31.20	Zero Insertion Socket	Wire Wrap	Q10B	19X19 PGA Grid	AB-144-QF10BZ-P12-W-1	F2956
144	0.65	31.20	Zero Insertion Socket	Wire Wrap	Q10B	19X19 PGA Grid	AB-144-QF10BZ-P12-W-1	F4429
160	0.50	26.00 - 27.90	Surface Mount	Screw Machine	Q48	C	AB-160-QF48S-C-M	F4431
160	0.50	26.00 - 27.90	Surface Mount	Wire Wrap	Q48	C	AB-160-QF48S-C-W	F4432
160	0.50	26.00 - 27.90	Surface Mount	Screw Machine	Q48	19X19 PGA Grid	AB-160-QF48S-P12-M	F1718
160	0.50	26.00 - 27.90	Surface Mount	Wire Wrap	Q48	19X19 PGA Grid	AB-160-QF48S-P12-W	F1717
160	0.65	30.00 - 31.90	Surface Mount	Screw Machine	Q7	A	AB-160-QF07S-A-M	F2966
160	0.65	30.00 - 31.90	Surface Mount	Wire Wrap	Q7	A	AB-160-QF07S-A-W	F2967
160	0.65	30.00 - 31.90	Surface Mount	Screw Machine	Q7	C	AB-160-QF07S-C-M	F2968
160	0.65	30.00 - 31.90	Surface Mount	Wire Wrap	Q7	C	AB-160-QF07S-C-W	F2969
160	0.65	30.00 - 31.90	Surface Mount	Screw Machine	Q7	17X17 PGA Grid	AB-160-QF07S-P10-M	F2970
160	0.65	30.00 - 31.90	Surface Mount	Wire Wrap	Q7	17X17 PGA Grid	AB-160-QF07S-P10-W	F2971
160	0.65	30.00 - 31.90	Surface Mount	Screw Machine	Q7	19X19 PGA Grid	AB-160-QF07S-P12-M	F1918
160	0.65	30.00 - 31.90	Surface Mount	Wire Wrap	Q7	19X19 PGA Grid	AB-160-QF07S-P12-W	F1919
160	0.65	31.90	Zero Insertion Socket	Screw Machine	Q7A	19X19 PGA Grid	AB-160-QF07AZ-P12-M-1	F1074
160	0.65	31.90	Zero Insertion Socket	Wire Wrap	Q7A	19X19 PGA Grid	AB-160-QF07AZ-P12-W-1	F2976
160	0.65	31.20	Zero Insertion Socket	Wire Wrap	Q7B	19X19 PGA Grid	AB-160-QF07BZ-P12-W-1	F6222
160	0.65	30.00 - 31.90	Production Socket	Wire Wrap	Q7	A	AB-160-QF07P-A-W-1	F6855
172	.025"	1.150" sq	Zero Insertion Socket	Screw Machine	Q12	23X23 PGA Grid	AB-172-QF12Z-P16-M-1	F1075
172	.025"	1.150" sq	Zero Insertion Socket	Wire Wrap	Q12	23X23 PGA Grid	AB-172-QF12Z-P16-W-1	F2999
176	0.40	22.00 - 23.90	Surface Mount	Screw Machine	Q19	16X16 PGA Grid	AB-176-QF19S-P9-M	F60F0
176	0.40	22.00	Zero Insertion Socket	Screw Machine	Q19D	16X16 PGA Grid	AB-176-QF19DZ-P14-M-1	F3007
176	0.40	22.00	Zero Insertion Socket	Wire Wrap	Q19D	16X16 PGA Grid	AB-176-QF19DZ-P14-W-1	F3009
176	0.50	26.00 - 27.90	Surface Mount	Screw Machine	Q67	17X17 PGA Grid	AB-176-QF67S-P10-M	F2031
176	0.50	26.00 - 27.90	Surface Mount	Wire Wrap	Q67	17X17 PGA Grid	AB-176-QF67S-P10-W	F2032
176	0.50	26.00	Zero Insertion Socket	Screw Machine	Q67D	A	AB-176-QF67DZ-A-M-1	F3010
176	0.50	26.00	Zero Insertion Socket	Wire Wrap	Q67D	A	AB-176-QF67DZ-A-W-1	F4753
176	0.50	26.00	Zero Insertion Socket	Screw Machine	Q67D	17X17 PGA Grid	AB-176-QF67DZ-P10-M-1	F2004
176	0.50	26.00	Zero Insertion Socket	Wire Wrap	Q67D	17X17 PGA Grid	AB-176-QF67DZ-P10-W-1	F2006
196	.025"	1.480"	Surface Mount	Screw Machine	Q15	20X20 PGA Grid	AB-196-QF15S-P13-M	F1391
196	.025"	1.480"	Surface Mount	Wire Wrap	Q15	20X20 PGA Grid	AB-196-QF15S-P13-W	F3015
196	.025"	1.480"	Zero Insertion Socket	Screw Machine	Q15	20X20 PGA Grid	AB-196-QF15Z-P13-M-1	F1350
196	.025"	1.480"	Zero Insertion Socket	Wire Wrap	Q15	20X20 PGA Grid	AB-196-QF15Z-P13-W-1	F3017
208	0.50	30.00 - 31.90	Surface Mount	Screw Machine	Q21	A	AB-208-QF21S-A-M	F3022
208	0.50	30.00 - 31.90	Surface Mount	Wire Wrap	Q21	A	AB-208-QF21S-A-W	F3023
208	0.50	30.00 - 31.90	Surface Mount	Screw Machine	Q21	C	AB-208-QF21S-C-M	F5661
208	0.50	30.00 - 31.90	Surface Mount	Wire Wrap	Q21	C	AB-208-QF21S-C-W	F3025
208	0.50	30.00 - 31.90	Surface Mount	Screw Machine	Q21	17X17 PGA Grid	AB-208-QF21S-P10-M	F2303
208	0.50	30.00 - 31.90	Surface Mount	Wire Wrap	Q21	17X17 PGA Grid	AB-208-QF21S-P10-W	F6446
208	0.50	30.00 - 31.90	Surface Mount	Screw Machine	Q21	18X18 PGA Grid	AB-208-QF21S-P11-M	F3026
208	0.50	30.00 - 31.90	Surface Mount	Wire Wrap	Q21	18X18 PGA Grid	AB-208-QF21S-P11-W	F3027
208	0.50	30.00 - 31.90	Surface Mount	Screw Machine	Q21	20X20 PGA Grid	AB-208-QF21S-P13-M	F2071
208	0.50	30.00 - 31.90	Surface Mount	Wire Wrap	Q21	20X20 PGA Grid	AB-208-QF21S-P13-W	F3028
208	0.50	30.00 - 31.90	Zero Insertion Socket	Screw Machine	Q21	20X20 PGA Grid	AB-208-QF21ZYAM-P13-M-1-B7	F6359
208	0.50	30.00 - 31.90	Zero Insertion Socket	Screw Machine	Q21B	21X21PGA Grid	AB-208-QF21BZENP-P14-M-1	F2125
208	0.50	30.00 - 31.90	Zero Insertion Socket	Wire Wrap	Q21B	21X21PGA Grid	AB-208-QF21BZENP-P14-W-1	F3030
208	0.50	30.00 - 31.90	Zero Insertion Socket	Screw Machine	Q21B	C	AB-208-QF21BZYAM-C-M-1	F3951
208	0.50	30.00 - 31.90	Zero Insertion Socket	Screw Machine	Q21B	20X20 PGA Grid	AB-208-QF21BZYAM-P13-M-1	F1451
208	0.50	30.00 - 31.90	Zero Insertion Socket	Wire Wrap	Q21B	20X20 PGA Grid	AB-208-QF21BZYAM-P13-W-1	F3032

PROTOTYPING ADAPTERS, EXTENDERS & PROTOTYPING BOARDS

# PROTOTYPING ADAPTERS - FULLY ASSEMBLED & TESTED

## Prototyping PC Board Configurations



P5= PGA 8X8	P10= PGA 17X17	P19= PGA 26X26
P6= PGA 9X9	P11= PGA 18X18	P20= PGA 27x27
P2= PGA 10X10	P12= PGA 19X19	P21= PGA 28X28
P1= PGA 11X11	P13= PGA 20X20	P22= PGA 29x29
P7= PGA 12X12	P14= PGA 21X21	P23= PGA 30X30
P3= PGA 13X13	P15= PGA 22X22	P24= PGA 31X31
P8= PGA 14X14	P16= PGA 23X23	P25= PGA 32X32
P4= PGA 15X15	P17= PGA 24X24	P26= PGA 33x33
P9= PGA 16X16	P18= PGA 25X25	P27= PGA 34x34

## Ordering Information Example

Pin Count \_\_\_\_\_ Prototyping PC Board Configurations (see below)  
 Product Code \_\_\_\_\_ AB-120-QF05 (Z)-P10-M-(1)  
 Chip Pkg Socket Footprint \_\_\_\_\_  
 Top Socket Configurations \_\_\_\_\_  
 CQFP & PQFP only:  
 S = SMT Pads  
 P = Production  
 Z = ZIF Socket

Optional:  
 1 = Socket Included  
 0 = Socket Not Included

Bottom Male Pin Type:  
 M = Screw Machine Pin  
 W = Wire Wrap Post

For a complete list of prototyping adapter specifications, pricing and delivery information, please see

Web Link: [www.1800adapter.com/004](http://www.1800adapter.com/004)

## PQFP/TQFP (cont.)

Pin Count	Lead Pitch (mm)	Tip-to-Tip mm (sq.)	Adapter Top Female Configuration	Bottom Pin Type	Bottom Configuration Type	Adapter Bottom Male Configuration	ET Part #	Drawing#
208	0.50	30.00 - 31.90	Zero Insertion Socket	Screw Machine	Q21C	20X20 PGA Grid	AB-208-QF21CZ-P13-M-1	F4436
208	0.50	30.00 - 31.90	Zero Insertion Socket	Screw Machine	Q21C	21X21PGA Grid	AB-208-QF21CZ-P14-M-1	F1473
208	0.50	30.00 - 31.90	Zero Insertion Socket	Wire Wrap	Q21C	21X21PGA Grid	AB-208-QF21CZ-P14-W-1	F6090
216	0.40	26.00	Surface Mount	Screw Machine	Q65	16X16 PGA Grid	AB-216-QF65S-P9-M	F6034
240	0.50	34.00 - 35.90	Surface Mount	Screw Machine	Q62	20X20 PGA Grid	AB-240-QF62S-P13-M	F1515
240	0.50	34.00 - 35.90	Surface Mount	Wire Wrap	Q62	20X20 PGA Grid	AB-240-QF62S-P13-W	F4438
240	0.50	34.60	Zero Insertion Socket	Screw Machine	Q62C	C	AB-240-QF62CZ-C-M-1	F3042
240	0.50	34.60	Zero Insertion Socket	Wire Wrap	Q62C	C	AB-240-QF62CZ-C-W-1	F4767
240	0.50	34.60	Zero Insertion Socket	Screw Machine	Q62C	18X18 PGA Grid	AB-240-QF62CZ-P11-M-1	F5837
240	0.50	34.60	Zero Insertion Socket	Screw Machine	Q62C	20X20 PGA Grid	AB-240-QF62CZ-P13-M-1	F1659
240	0.50	34.60	Zero Insertion Socket	Wire Wrap	Q62C	20X20 PGA Grid	AB-240-QF62CZ-P13-W-1	F2298
304	0.50	42.60	Zero Insertion Socket	Screw Machine	Q61C	21X21PGA Grid	AB-304-QF61CZ-P14-M-1	F3931
304	0.50	42.60	Zero Insertion Socket	Screw Machine	Q61C	27x27 PGA GRID	AB-304-QF61CZ-P20-M-1	F3994

## DIP

Pin Count	Package Specs (width/inches)	Adapter Top Female Config.	Adapter Bottom Male Config. (inches)	Bottom Pin Type	Description	Drawing#
20	.300 DIP	Production Socket	.600 DIP	Screw Machine	AB-020-300FEM-600MALE-M	F5536
20	.600 DIP	Production Socket	.300 DIP	Screw Machine	AB-020-600FEM-300MALE-M	F2603
20	.600 DIP	Production Socket	.300 DIP	Wire Wrap	AB-020-600FEM-300MALE-W	F2604
20	.600 DIP	Production Socket	.400 DIP	Screw Machine	AB-020-600FEM-400MALE-M	F4186
20	.600 DIP	Production Socket	.400 DIP	Wire Wrap	AB-020-600FEM-400MALE-W	F4435
24	.300 DIP	Production Socket	.600 DIP	Screw Machine	AB-024-300FEM-600MALE-M	F2619
24	.600 DIP	Production Socket	.300 DIP	Screw Machine	AB-024-600FEM-300MALE-M	F2625
24	.600 DIP	Production Socket	.300 DIP	Wire Wrap	AB-024-600FEM-300MALE-W	F2626
28	.300 DIP	Production Socket	.600 DIP	Screw Machine	AB-028-300FEM-600MALE-M	F2634
28	.300 DIP	Production Socket	.600 DIP	Wire Wrap	AB-028-300FEM-600MALE-W	F2635
28	.300 DIP	Production Socket	.600 DIP	Screw Machine	AB-028-400FEM-600MALE-M	F2636
28	.300 DIP	Production Socket	.600 DIP	Wire Wrap	AB-028-400FEM-600MALE-W	F2637
28	.600 DIP	Production Socket	.300 DIP	Screw Machine	AB-028-600FEM-300MALE-M	F2638
28	.600 DIP	Production Socket	.300 DIP	Wire Wrap	AB-028-600FEM-300MALE-W	F2639
28	.600 DIP	Production Socket	.400 DIP	Screw Machine	AB-028-600FEM-400MALE-M	F2640
28	.600 DIP	Production Socket	.400 DIP	Wire Wrap	AB-028-600FEM-400MALE-W	F2641
32	.400 DIP	Production Socket	.600 DIP	Screw Machine	AB-032-400FEM-600MALE-M	F1062
32	.600 DIP	Production Socket	.300 DIP	Screw Machine	AB-032-600FEM-300MALE-M	F2659
40	.600 DIP	Production Socket	.300 DIP	Screw Machine	AB-040-600FEM-300MALE-M	F2669
40	.600 DIP	Production Socket	.300 DIP	Wire Wrap	AB-040-600FEM-300MALE-W	F2670

## SDIP

Pin Count	Package Specs (width/inches)	Adapter Top Female Config.	Adapter Bottom Male Config.	Bottom Pin Type	Description	Drawing#
28	.750 SDIP	Production Socket	Type B & C	Screw Machine	AB-028/030-SDIP-B/C-M,	F2656
28	.750 SDIP	Production Socket	Type B & C	Wire Wrap	AB-028/030-SDIP-B/C-W,	F2657
40	.750 SDIP	Production Socket	Type B & C	Screw Machine	AB-040/042-SDIP-B/C-M,	F2672
40	.750 SDIP	Production Socket	Type B & C	Wire Wrap	AB-040/042-SDIP-B/C-W,	F2673
48	.750 SDIP	Production Socket	Type A & B	Screw Machine	AB-048/052-SDIP-A/B-M,	F2702
56	.650 SDIP	Production Socket	Type C	Screw Machine	AB-056-SDIP-C-M	F6624
56	.650 SDIP	Production Socket	Type C	Wire Wrap	AB-056-SDIP-C-W	F6623
64	.750 SDIP	Production Socket	Type A & B	Screw Machine	AB-064-SDIP-A/B-M,	F2749
64	.750 SDIP	Production Socket	Type A & B	Wire Wrap	AB-064-SDIP-A/B-W,	F2750