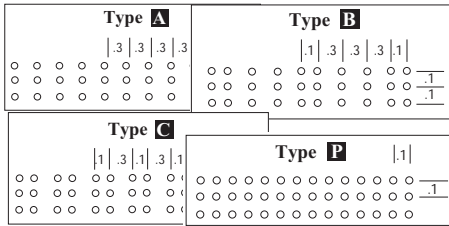


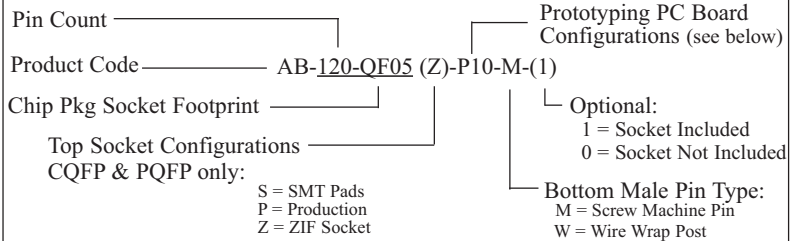
# FULLY ASSEMBLED & TESTED -PROTOTYPING ADAPTERS

## Prototyping PC Board Configurations



- P5= PGA 8X8      P10= PGA 17X17      P19= PGA 26X26
- P6= PGA 9X9      P11= PGA 18X18      P20= PGA 27x27
- P2= PGA 10X10    P12= PGA 19X19      P21= PGA 28X28
- P1= PGA 11X11    P13= PGA 20X20      P22= PGA 29x29
- P7= PGA 12X12    P14= PGA 21X21      P23= PGA 30X30
- P3= PGA 13X13    P15= PGA 22X22      P24= PGA 31X31
- P8= PGA 14X14    P16= PGA 23X23      P25= PGA 32X32
- P4= PGA 15X15    P17= PGA 24X24      P26= PGA 33x33
- P9= PGA 16X16    P18= PGA 25X25      P27= PGA 34x34

## Ordering Information Example



For a complete list of prototyping adapter specifications, pricing and delivery information, please see

**Web Link: [www.1800adapter.com/004](http://www.1800adapter.com/004)**

## SOIC/SSOP

Pin Count	Lead Pitch (mm)	Tip-to-Tip mm (sq.)	Adapter Top Female Configuration	Adapter Bottom Male Configuration	Bottom Pin Type	ET Part #	Drawing #
8	1.27	3.90	Surface Mount	.300" DIP	Screw Machine	AB-008-SO01S-A-M	F6748
8	0.65	3.00	Zero Insertion Socket	.300" DIP	Screw Machine	AB-008-ST36Z-A-M-1	F6515
20	0.65	4.4 to 8.00	Surface Mount	.300" DIP	Screw Machine	AB-020-ST03S-A-M	F6045
20	0.65	4.4 to 8.00	Surface Mount	.300" DIP	Wire Wrap	AB-020-ST03S-A-W	F6044
20	0.50	3.00 to 9.90	Surface Mount	.300" DIP	Screw Machine	AB-020-ST35S-A-M	F6038
20	0.50	3.00 to 9.90	Surface Mount	.300" DIP	Wire Wrap	AB-020-ST35S-A-W	F5157
24	0.65	4.40	Surface Mount	.300" DIP	Screw Machine	AB-024-SO03S-A-M	F6607
24	1.00	9.90	Surface Mount	C	Screw Machine	AB-024-SS08S-C-M	F2629
28	1.27	3.90	Surface Mount	A	Screw Machine	AB-028-SO01S-A-M	F6091
28	1.27	3.90	Surface Mount	A	Wire Wrap	AB-028-SO01S-A-W	F6092
28	0.635	3.80 to 7.62	Surface Mount	A	Screw Machine	AB-028-SS01S-A-M	F6035
28	0.635	3.80 to 7.62	Surface Mount	A	Wire Wrap	AB-028-SS01S-A-W	F3035
28	0.635	7.62	Zero Insertion Socket	P7	Screw Machine	AB-028-SS06Z-P7-M-1	F1088
28	0.635	7.62	Zero Insertion Socket	P7	Wire Wrap	AB-028-SS06Z-P7-W-1	F5080
28	0.65	5.30	Surface Mount	.300" DIP	Screw Machine	AB-028-SS34S-300-M	F6165
28	0.65	5.30	Surface Mount	.300" DIP	Wire Wrap	AB-028-SS34S-300-W	F6164
28	0.65	5.30	Surface Mount	.600" DIP	Screw Machine	AB-028-SS34S-600-M	F6160
28	0.65	5.30	Surface Mount	.600" DIP	Wire Wrap	AB-028-SS34S-600-W	F6131
36	0.80	7.62	Zero Insertion Socket	A	Screw Machine	AB-036-SS16Z-A-M-1	F6508
44	1.27	13.20	Surface Mount	A	Screw Machine	AB-044-SO09PS-A-M	F6009
44	1.27	13.20	Surface Mount	A	Wire Wrap	AB-044-SO09PS-A-W	F6013
44	1.27	13.20	Surface Mount	A	Screw Machine	AB-044-SO09S-A-M	F2602
44	1.27	13.20	Surface Mount	A	Wire Wrap	AB-044-SO09S-A-W	F5148
44	1.27	13.20	Surface Mount	C	Screw Machine	AB-044-SO09S-C-M	F4291
44	1.27	13.20	Surface Mount	C	Wire Wrap	AB-044-SO09S-C-W	F6093
48	0.635	7.62	Zero Insertion Socket	P1	Screw Machine	AB-048-SS06Z-P1-M-1	F5829
48	0.635	7.62	Zero Insertion Socket	P1	Wire Wrap	AB-048-SS06Z-P1-W-1	F5830
48	0.50	6.10 to 8.00	Surface Mount	A	Screw Machine	AB-048-SS15S-A-M	F5309
48	0.50	6.10 to 8.00	Surface Mount	A	Wire Wrap	AB-048-SS15S-A-W	F4421
48	0.50	6.10 to 8.00	Zero Insertion Socket	C	Screw Machine	AB-048-SS15Z-C-M-1	F5009
56	0.635	7.62	Zero Insertion Socket	P1	Screw Machine	AB-056-SS06Z-P1-M-1	F2217
56	0.635	7.62	Zero Insertion Socket	P1	Wire Wrap	AB-056-SS06Z-P1-W-1	F3723
56	0.50	6.10	Surface Mount	A	Screw Machine	AB-056-SS15S-A-M	F5062
56	0.50	6.10	Surface Mount	A	Wire Wrap	AB-056-SS15S-A-W	F6097

### Try our Quick Probe Test Fixture

Designed to quickly connect a test instrument, such as an oscilloscope, to a variety of SMDs including PLCC, SOIC, QFP, and VIAS or test point holes.

**Web Link: [www.1800adapter.com/quickprobe](http://www.1800adapter.com/quickprobe)**

For a complete list of product specifications, pricing and delivery information, please see:

**Web Link: [www.1800adapter.com/004](http://www.1800adapter.com/004)**