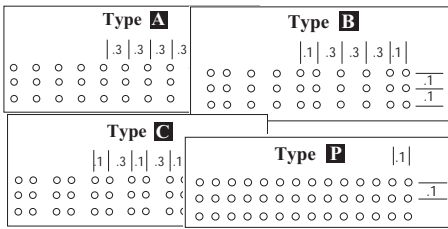


# PROTOTYPING ADAPTERS - FULLY ASSEMBLED & TESTED

## Prototyping PC Board Configurations



P5= PGA 8X8	P10= PGA 17X17	P19= PGA 26X26
P6= PGA 9X9	P11= PGA 18X18	P20= PGA 27x27
P2= PGA 10X10	P12= PGA 19X19	P21= PGA 28X28
P1= PGA 11X11	P13= PGA 20X20	P22= PGA 29x29
P7= PGA 12X12	P14= PGA 21X21	P23= PGA 30X30
P3= PGA 13X13	P15= PGA 22X22	P24= PGA 31X31
P8= PGA 14X14	P16= PGA 23X23	P25= PGA 32X32
P4= PGA 15X15	P17= PGA 24X24	P26= PGA 33x33
P9= PGA 16X16	P18= PGA 25X25	P27= PGA 34x34

## Ordering Information Example

Pin Count \_\_\_\_\_ Prototyping PC Board Configurations (see below)

Product Code \_\_\_\_\_ AB-120-QF05 (Z)-P10-M-(1)

Chip Pkg Socket Footprint \_\_\_\_\_

Top Socket Configurations \_\_\_\_\_

CQFP & PQFP only:

S = SMT Pads  
P = Production  
Z = ZIF Socket

Optional:  
1 = Socket Included  
0 = Socket Not Included

Bottom Male Pin Type:  
M = Screw Machine Pin  
W = Wire Wrap Post

For a complete list of prototyping adapter specifications, pricing and delivery information, please see

Web Link: [www.1800adapter.com/004](http://www.1800adapter.com/004)

## PQFP/TQFP (cont.)

Pin Count	Lead Pitch (mm)	Tip-to-Tip mm (sq.)	Adapter Top Female Configuration	Bottom Pin Type	Bottom Configuration Type	Adapter Bottom Male Configuration	ET Part #	Drawing#
208	0.50	30.00 - 31.90	Zero Insertion Socket	Screw Machine	Q21C	20X20 PGA Grid	AB-208-QF21CZ-P13-M-1	F4436
208	0.50	30.00 - 31.90	Zero Insertion Socket	Screw Machine	Q21C	21X21PGA Grid	AB-208-QF21CZ-P14-M-1	F1473
208	0.50	30.00 - 31.90	Zero Insertion Socket	Wire Wrap	Q21C	21X21PGA Grid	AB-208-QF21CZ-P14-W-1	F6090
216	0.40	26.00	Surface Mount	Screw Machine	Q65	16X16 PGA Grid	AB-216-QF65S-P9-M	F6034
240	0.50	34.00 - 35.90	Surface Mount	Screw Machine	Q62	20X20 PGA Grid	AB-240-QF62S-P13-M	F1515
240	0.50	34.00 - 35.90	Surface Mount	Wire Wrap	Q62	20X20 PGA Grid	AB-240-QF62S-P13-W	F4438
240	0.50	34.60	Zero Insertion Socket	Screw Machine	Q62C	C	AB-240-QF62CZ-C-M-1	F3042
240	0.50	34.60	Zero Insertion Socket	Wire Wrap	Q62C	C	AB-240-QF62CZ-C-W-1	F4767
240	0.50	34.60	Zero Insertion Socket	Screw Machine	Q62C	18X18 PGA Grid	AB-240-QF62CZ-P11-M-1	F5837
240	0.50	34.60	Zero Insertion Socket	Screw Machine	Q62C	20X20 PGA Grid	AB-240-QF62CZ-P13-M-1	F1659
240	0.50	34.60	Zero Insertion Socket	Wire Wrap	Q62C	20X20 PGA Grid	AB-240-QF62CZ-P13-W-1	F2298
304	0.50	42.60	Zero Insertion Socket	Screw Machine	Q61C	21X21PGA Grid	AB-304-QF61CZ-P14-M-1	F3931
304	0.50	42.60	Zero Insertion Socket	Screw Machine	Q61C	27x27 PGA GRID	AB-304-QF61CZ-P20-M-1	F3994

## DIP

Pin Count	Package Specs (width/inches)	Adapter Top Female Config.	Adapter Bottom Male Config. (inches)	Bottom Pin Type	Description	Drawing#
20	.300 DIP	Production Socket	.600 DIP	Screw Machine	AB-020-300FEM-600MALE-M	F5536
20	.600 DIP	Production Socket	.300 DIP	Screw Machine	AB-020-600FEM-300MALE-M	F2603
20	.600 DIP	Production Socket	.300 DIP	Wire Wrap	AB-020-600FEM-300MALE-W	F2604
20	.600 DIP	Production Socket	.400 DIP	Screw Machine	AB-020-600FEM-400MALE-M	F4186
20	.600 DIP	Production Socket	.400 DIP	Wire Wrap	AB-020-600FEM-400MALE-W	F4435
24	.300 DIP	Production Socket	.600 DIP	Screw Machine	AB-024-300FEM-600MALE-M	F2619
24	.600 DIP	Production Socket	.300 DIP	Screw Machine	AB-024-600FEM-300MALE-M	F2625
24	.600 DIP	Production Socket	.300 DIP	Wire Wrap	AB-024-600FEM-300MALE-W	F2626
28	.300 DIP	Production Socket	.600 DIP	Screw Machine	AB-028-300FEM-600MALE-M	F2634
28	.300 DIP	Production Socket	.600 DIP	Wire Wrap	AB-028-300FEM-600MALE-W	F2635
28	.300 DIP	Production Socket	.600 DIP	Screw Machine	AB-028-400FEM-600MALE-M	F2636
28	.300 DIP	Production Socket	.600 DIP	Wire Wrap	AB-028-400FEM-600MALE-W	F2637
28	.600 DIP	Production Socket	.300 DIP	Screw Machine	AB-028-600FEM-300MALE-M	F2638
28	.600 DIP	Production Socket	.300 DIP	Wire Wrap	AB-028-600FEM-300MALE-W	F2639
28	.600 DIP	Production Socket	.400 DIP	Screw Machine	AB-028-600FEM-400MALE-M	F2640
28	.600 DIP	Production Socket	.400 DIP	Wire Wrap	AB-028-600FEM-400MALE-W	F2641
32	.400 DIP	Production Socket	.600 DIP	Screw Machine	AB-032-400FEM-600MALE-M	F1062
32	.600 DIP	Production Socket	.300 DIP	Screw Machine	AB-032-600FEM-300MALE-M	F2659
40	.600 DIP	Production Socket	.300 DIP	Screw Machine	AB-040-600FEM-300MALE-M	F2669
40	.600 DIP	Production Socket	.300 DIP	Wire Wrap	AB-040-600FEM-300MALE-W	F2670

## SDIP

Pin Count	Package Specs (width/inches)	Adapter Top Female Config.	Adapter Bottom Male Config.	Bottom Pin Type	Description	Drawing#
28	.750 SDIP	Production Socket	Type B & C	Screw Machine	AB-028/030-SDIP-B/C-M,	F2656
28	.750 SDIP	Production Socket	Type B & C	Wire Wrap	AB-028/030-SDIP-B/C-W,	F2657
40	.750 SDIP	Production Socket	Type B & C	Screw Machine	AB-040/042-SDIP-B/C-M,	F2672
40	.750 SDIP	Production Socket	Type B & C	Wire Wrap	AB-040/042-SDIP-B/C-W,	F2673
48	.750 SDIP	Production Socket	Type A & B	Screw Machine	AB-048/052-SDIP-A/B-M,	F2702
56	.650 SDIP	Production Socket	Type C	Screw Machine	AB-056-SDIP-C-M	F6624
56	.650 SDIP	Production Socket	Type C	Wire Wrap	AB-056-SDIP-C-W	F6623
64	.750 SDIP	Production Socket	Type A & B	Screw Machine	AB-064-SDIP-A/B-M,	F2749
64	.750 SDIP	Production Socket	Type A & B	Wire Wrap	AB-064-SDIP-A/B-W,	F2750