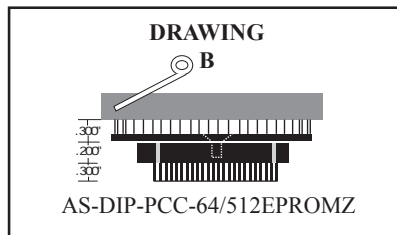
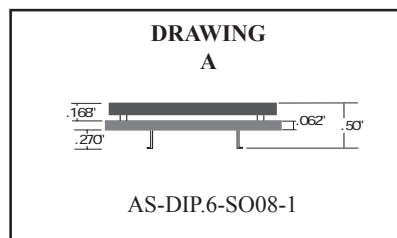
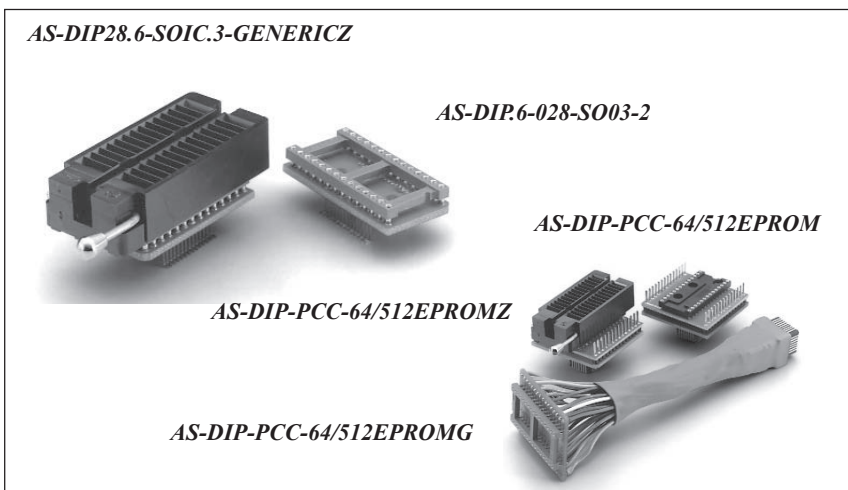


SOIC & PLCC - PAL/EPROM EMULATOR ADAPTERS



Ordering Information Example

Product Code _____ AS-DIP-SOIC-1MEG/EPROM(G) (Z) _____ EPROM Size
 DIP Device Female Receptacle _____ (Z) = ZIF Socket
 Male Plug _____ (G) = Optional Gang Version
 GENERIC = 1-to-1



Icons identify your emulator pod and target socket.

FEATURES

- Emulate your 28 and 32-pin SOIC or PLCC devices with a standard DIP device
- Test new EPROM code quickly and easily
- Convert SOIC surface mount pads, or a PLCC socket on a printed circuit board, to a zero-insertion force DIP socket
- Used with industry-standard EPROMs: 8Kx8 and 64Kx8 (2764, 27128, 27256, 27512 and 1-4 MB)

EMULATOR TOOLS & ADAPTERS

EPROM - Surface Mountable		EPROM - Socketable	
Memory Size: 64K through 512K			
DIP 28 → SOIC SMT Pads Description # Document # AS-DIP28.6-SOIC.3-GENERICZ 31960 Note: SOIC Package width = 7.62mm (.300")	DIP 28 → PLCC SMT Pads AS-DIP-PCCS-512EPROM 32204	DIP 28 → LCC SMT Pads AS-DIP-LCC-64/512EPROM 31600 AS-DIP-LCC-64/512EPROMZ 31601	DIP 28 → PLCC 32 Description # Document # AS-DIP-PCC-64/512EPROM 31152 AS-DIP-PCC-64/512EPROMZ 31178 GANG VERSION AS-DIP-PCC-64/512EPROMG 31207 Note: 5 3/4" Long Typical. AS-DIP-PCC-64/512EPROMGZ 32427 Note: 5 3/4" Long Typical.
Memory Size: 1MB through 4MB			
DIP 32 → SOIC SMT Pads Description # Document # AS-DIP32.6-SOIC.4-GENERIC 31145 Note: SOIC package width = 10.2mm (.400") AS-DIP32.6-SOIC.4-GENERICZ 31086 Note: SOIC package width = 10.2mm (.400")	SDIP 28 → SOIC SMT Pads AS-SDP.4-028-SO05-2 32086	DIP 32 → PLCC 32 Description # Document # AS-DIP-PCC-1MEG/EPROM 31855 AS-DIP-PCC-1MEG/EPROMZ 31455 AS-DIP-PCC-1MEG/EPROMG 31666 AS-DIP-PCC-1MEG/EPROMGZ 31667 AS-DIP-PCC-27C4096 31519	
PAL - PLCC Wired 1-to-1			
Description #	AS-DIP28-PCC6-GENRC	Document #	33851
Note: Wired 1-to-1			

For a complete listing of SOIC, PLCC PAL/EPROM emulator adapters and additional information, please see:
 Web Link: www.1800adapter.com/029