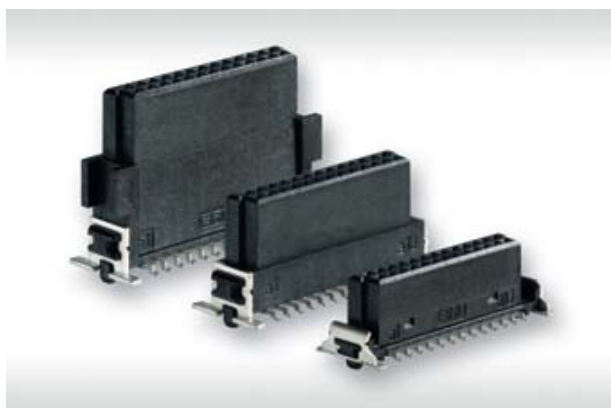


# SMC - 1.27 mm Connectors

## VERTICAL FEMALE

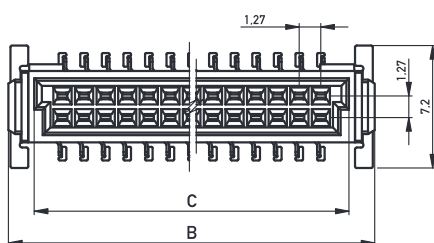
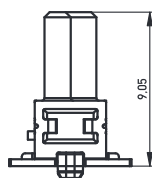
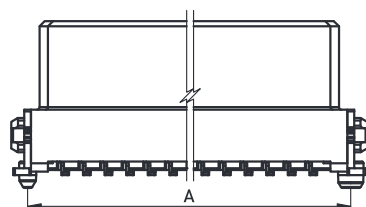
### PRODUCT SPECIFICATION



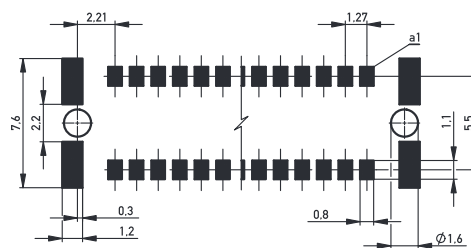
- SMT termination
- dual row connector
- data rates up to 3 Gbit/s
- location pegs for exact board placement
- black insulation body for fast and reliable visual recognition
- fully automated board assembly
- 3 stacking heights (6.25, 9.05, 13.65 mm)

### DIMENSIONAL DRAWINGS

Unmated Stacking Height 9.05 mm



Recommended Layout



12	10.77	12.70	9.37
16	13.31	15.24	11.91
20	15.85	17.78	14.45
26	19.66	21.60	18.26
32	23.47	25.40	22.07
40	28.55	30.48	27.15
50	34.90	36.80	33.50
68	46.33	48.20	44.93
80	53.95	55.80	52.55
No. of contacts	A	B	C

# SMC - 1.27 mm Connectors

## VERTICAL FEMALE



### ORDERING INFORMATION

No. of Pins	Unmated Stacking Height	Packaging	Part Number
12	6.25	Tape and reel	154805
16	6.25	Tape and reel	354055
20	6.25	Tape and reel	354056
26	6.25	Tape and reel	154806
32	6.25	Tape and reel	354057
40	6.25	Tape and reel	204632
50	6.25	Tape and reel	154807
68	6.25	Tape and reel	154808
80	6.25	Tape and reel	154809
12	9.05	Tape and reel	154717
16	9.05	Tape and reel	354062
20	9.05	Tape and reel	354063
26	9.05	Tape and reel	154718
32	9.05	Tape and reel	354064
40	9.05	Tape and reel	354065
50	9.05	Tape and reel	154719
68	9.05	Tape and reel	154720
80	9.05	Tape and reel	154721

## SMC - 1.27 mm Connectors

### VERTICAL FEMALE —

No. of Pins	Unmated Stacking Height	Packaging	Part Number
12	13.65	Tape and reel	234198
16	13.65	Tape and reel	354070
20	13.65	Tape and reel	354071
26	13.65	Tape and reel	204763
32	13.65	Tape and reel	354072
40	13.65	Tape and reel	354073
50	13.65	Tape and reel	234199
68	13.65	Tape and reel	234200
80	13.65	Tape and reel	234201