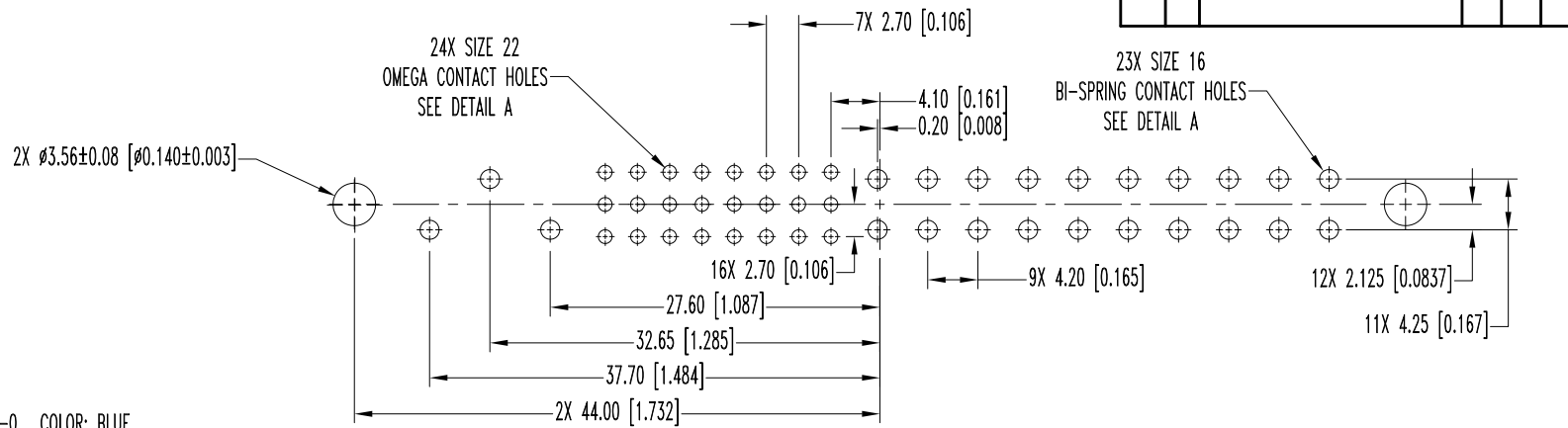


THIS DRAWING CONTAINS INFORMATION PROPRIETARY TO POSITRONIC AND ITS SUBSIDIARIES. POSITRONIC BELIEVES THE DATA ON THIS DRAWING TO BE RELIABLE, SINCE THE TECHNICAL INFORMATION IS GIVEN FREE OF CHARGE, THE USER EMPLOYS SUCH INFORMATION AT HIS OWN DISCRETION AND RISK. POSITRONIC ASSUMES NO RESPONSIBILITY FOR RESULTS OBTAINED OR DAMAGES INCURRED FROM USE OF SUCH INFORMATION IN WHOLE OR IN PART.

DATE	REV	REVISION RECORD	APP	DR	CK
7-8-05	NC	ECO 24315	RCW	YK	COLE
7-8-05	A	ECO 24460		TH	



NOTES:

1. MATERIALS AND FINISHES:

INSULATOR: GLASS FILLED POLYESTER, UL 94V-0. COLOR: BLUE.

SIZE 16 CONTACTS: HIGH CONDUCTIVITY PRECISION-MACHINED COPPER ALLOY WITH GOLD FLASH OVER NICKEL PLATE.

SIZE 22 CONTACTS: PRECISION-MACHINED COPPER ALLOY WITH GOLD FLASH OVER NICKEL PLATE.

2. ELECTRICAL CHARACTERISTICS:

CONTACT CURRENT RATING:

SIZE 16 POWER CONTACTS:

POSITIONS 45, 46 AND 47: 40 AMPERES CONTINUOUS, ALL CONTACTS UNDER LOAD.

POSITIONS 1-20: 28 AMPERES CONTINUOUS, ALL CONTACTS UNDER LOAD.

SIZE 22 SIGNAL CONTACTS: 3 AMPERES NOMINAL RATING.

INITIAL CONTACT RESISTANCE; MAXIMUM:

SIZE 16 CONTACT: 0.0007 OHMS MAXIMUM.

SIZE 22 CONTACT: 0.004 OHMS MAXIMUM.

PER IEC 512-2, TEST 2b.

INSULATOR RESISTANCE: 5 G OHMS PER IEC 512-2, TEST 3a.

VOLTAGE PROOF:

CONTACTS: 45, 46 AND 47: 3,000 V r.m.s.

CONTACTS: 1 THROUGH 20: 1,500 V r.m.s.

CONTACTS: 21 THROUGH 44: 1,000 V r.m.s.

CREEPAGE AND CLEARANCE

DISTANCE; MINIMUM:

CONTACT 47 TO CONTACT 45: 3.2 [0.126]

CONTACT 46 TO CONTACT 45: 3.2 [0.126]

CONTACT 47 TO SIGNAL CONTACTS: 6.4 [0.252]

CONTACT 46 TO SIGNAL CONTACTS: 6.4 [0.252]

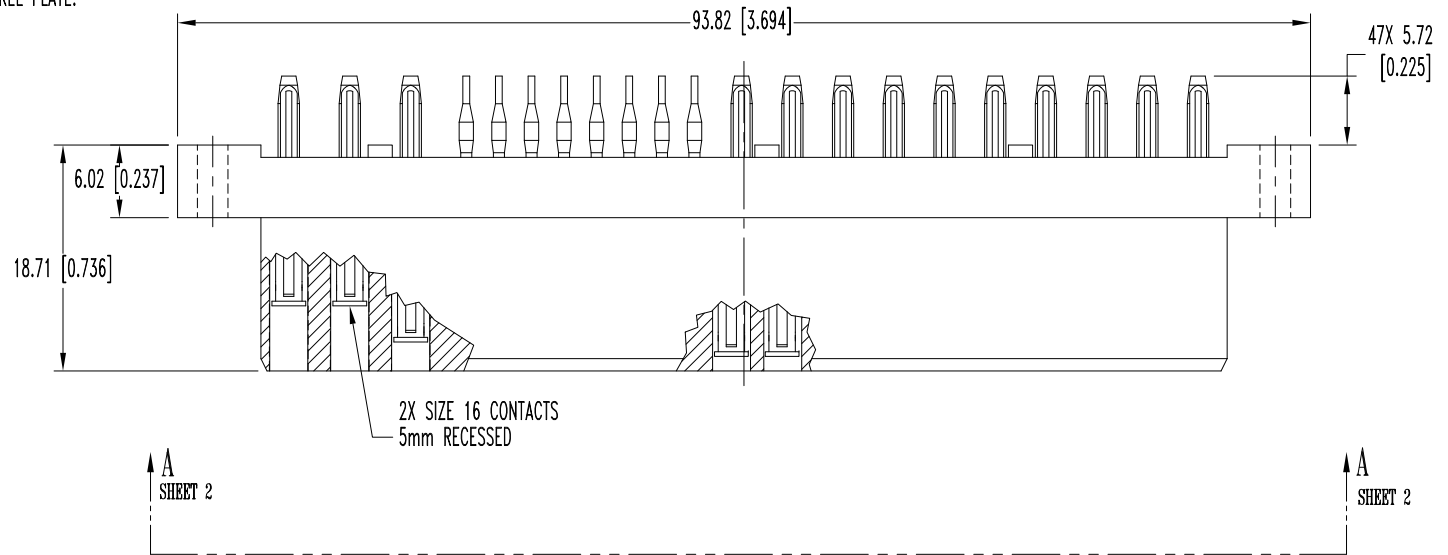
CONTACT 47 TO CONTACT 46: 2.5 [0.098]

CONTACT 45 TO SIGNAL CONTACTS: 2.0 [0.079]

3. WORKING TEMPERATURE: -55°C TO +125°C.

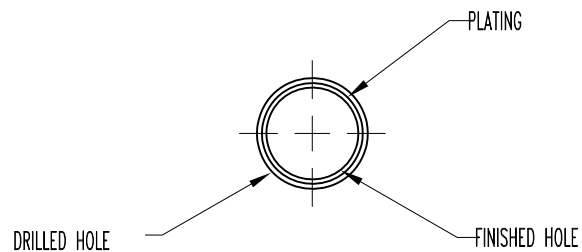
4. CONNECTORS ARE ROHS COMPLIANT PER ROHS DIRECTIVE 2002/95/EC OF 27 JAN 2003.

5. DIMENSIONS ARE IN MILLIMETERS [INCHES].



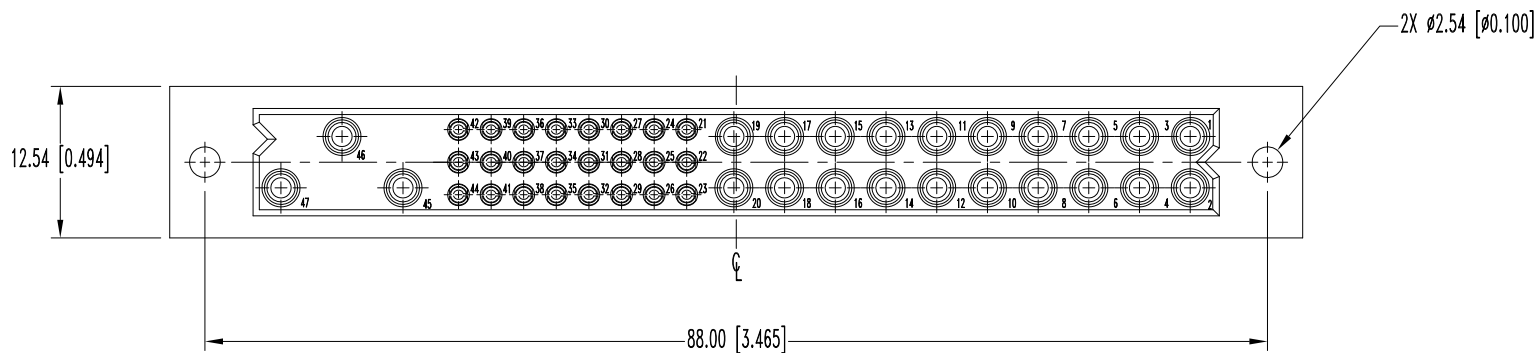
	POSITRONIC INDUSTRIES INC. www.connectpositronic.com		FSCM 28198
	PCI SERIES	SCALE N.T.S.	DRAWN BY YK
DECIMAL TOL. ± 0.38 [0.015]	APPROVED BY RCW		
TITLE PCIH47F9300A1/AA			
ANGULAR TOL. ± 3°	DATE 7-8-05	DRAWING NUMBER SK6304	REV. SHEET 1 OF 2 A

THIS DRAWING CONTAINS INFORMATION PROPRIETARY TO POSITRONIC AND ITS SUBSIDIARIES. POSITRONIC BELIEVES THE DATA ON THIS DRAWING TO BE RELIABLE, SINCE THE TECHNICAL INFORMATION IS GIVEN FREE OF CHARGE, THE USER EMPLOYS SUCH INFORMATION AT HIS OWN DISCRETION AND RISK. POSITRONIC ASSUMES NO RESPONSIBILITY FOR RESULTS OBTAINED OR DAMAGES INCURRED FROM USE OF SUCH INFORMATION IN WHOLE OR IN PART.



PRESS FIT CONTACT HOLES SEE SK6370

DETAIL A



VIEW A-A