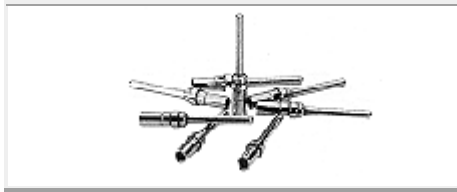


D-Sub Signal Crimp contacts
accepts cable AWG 18-28

Directive 2002/95/EC
„RoHS“
Compliant

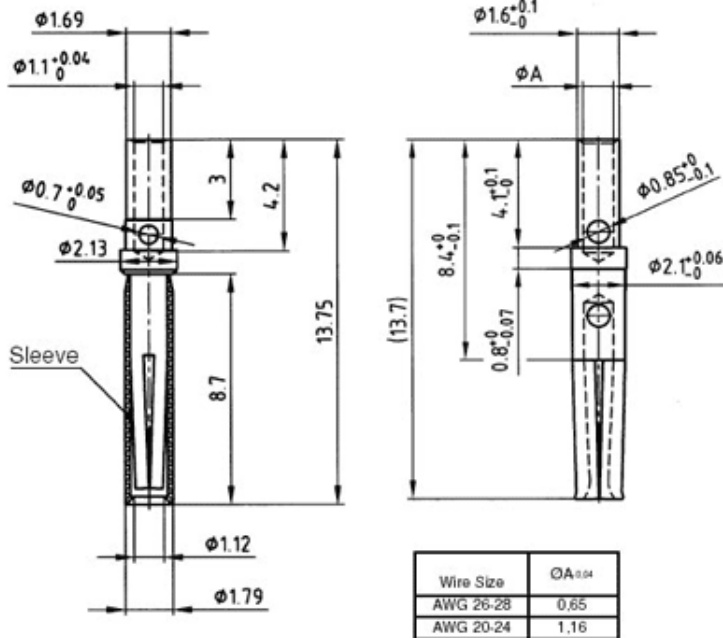


Socket contact

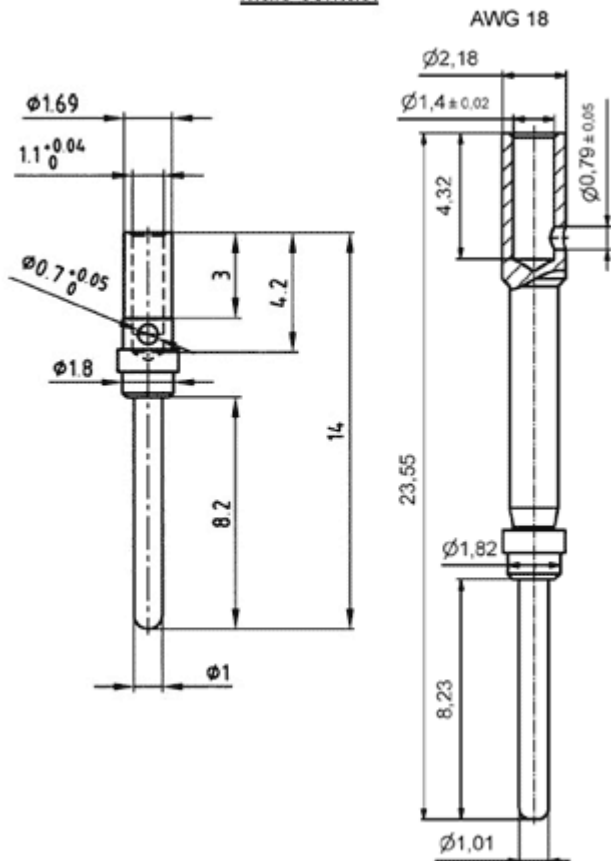
Socket contact

MIL-Version

Standard-Version



Male contact



Material Socket: Copper alloy

Note:

Crimp contacts are supplied in loose form.

Material:

Male: brass

Kat 1 i 2NA

Kat 1 i 3NA

J = 50 micro inch gold plating - Other platings on request.

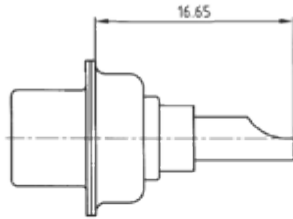
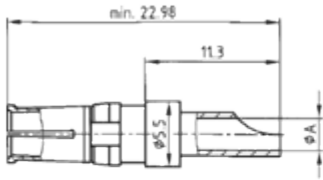
A = gold flash plating.



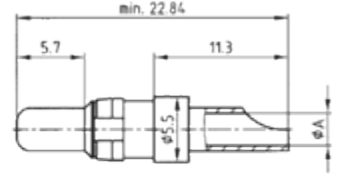
Combination D-Sub
High power contacts for solder cup

Directive 2002/95/EC
"RoHS"
Compliant

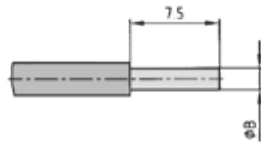
Socket contact



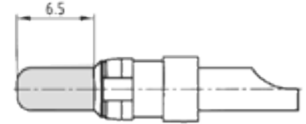
Plug contact



Wire stripping dimensions



Premating plug contact



Wire Size	Current Rating	ØA	ØB	mm
AWG 16-20	10 A	1.80	1.80	2.5
AWG 12-14	20 A	2.70	2.70	5.7
AWG 10-12	30 A	3.50	3.50	9.6
AWG 8-10	40 A	4.80	4.80	18.1

Wire Size	Current Rating	Quality class 1			Quality class 3		
		Socket contact	Termination type	Plug contact	Socket contact	Termination type	Plug contact
AWG 16-20	10 A	132 C 10019 X	41	131 C 10019 X	132 A 10019 X	61	131 A 10019 X
AWG 12-14	20 A	132 C 10029 X	42	131 C 10029 X	132 A 10029 X	62	131 A 10029 X
AWG 10-12	30 A	132 C 10039 X	43	131 C 10039 X	132 A 10039 X	63	131 A 10039 X
AWG 8-10	40 A	132 C 10049 X	44	131 C 10049 X	132 A 10049 X	64	131 A 10049 X

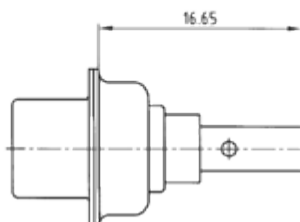
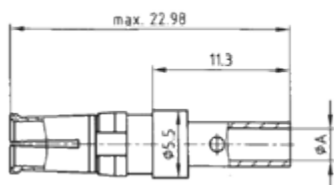
Quality Class 1 = C = 30 micro inch gold plating mating side
Quality Class 3 = A = hard gold plated



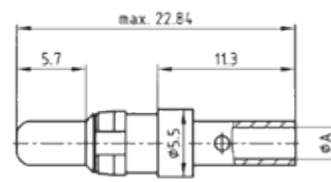
Combination D-Sub
High power contacts for crimp

Directive 2002/95/EC
"RoHS"
Compliant

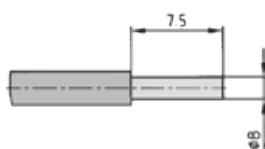
Socket contact



Plug contact



Wire stripping dimensions



Premating plug contact



Wire Size	Current Rating	ØA	ØB	ØB	mm	mm
AWG 16-20	10 A	1.70	0.90	1.70	0.60	2.30
AWG 12-14	20 A	2.60	1.80	2.60	2.80	5.3
AWG 10-12	30 A	3.70	2.20	3.70	3.80	10.70
AWG 8-10	40 A	4.60	2.90	4.60	6.60	16.60

Wire Size	Current Rating	Quality class 1		Quality class 3	
		Socket contact	Plug contact	Socket contact	Plug contact
AWG 16-20	10 A	132 C 11019 X	131 C 11019 X	132 A 11019 X	131 A 11019 X
AWG 12-14	20 A	132 C 11029 X	131 C 11029 X	132 A 11029 X	131 A 11029 X
AWG 10-12	30 A	132 C 11039 X	131 C 11039 X	132 A 11039 X	131 A 11039 X
AWG 8-10	40 A	132 C 11049 X	131 C 11049 X	132 A 11049 X	131 A 11049 X

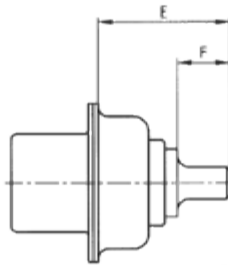
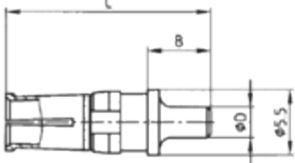
Quality Class 1 = C = 30 micro inch gold plating mating side
Quality Class 3 = A = hard gold plated



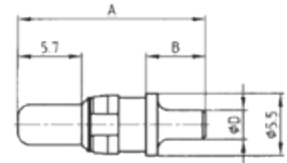
Combination D-Sub
High power contacts for solder pin straight

Directive 2002/95/EC
„RoHS“
Compliant

Socket contact



Plug contact



Premating plug contact



Current Rating	A	B	C	ØD	E	F
20 A*	15.84	4.30	15.98	1.95	9.65	3.80
20 A	16.84	5.30	16.98	2.60	10.65	4.30
20 A*	16.24	4.70	16.38	2.85	10.05	3.70
30 A	19.04	7.50	19.18	3.18	12.85	6.70
40 A	17.29	5.75	17.43	3.75	11.10	4.75

Current Rating	ØD	Quality class 1			Quality class 3			Plug premating contact
		Socket contact	Termination type	Plug contact	Socket contact	Termination type	Plug contact	
20 A	1.95 mm	132 C 12019 X	48*	131 C 12019 X	132 A 12019 X	68*	131 A 12019 X	131 C 12119 X
20 A	2.60 mm	132 C 12029 X	49	131 C 12029 X	132 A 12029 X	69	131 A 12029 X	131 C 12129 X
20 A	2.85 mm	132 C 12039 X	50*	131 C 12039 X	132 A 12039 X	70*	131 A 12039 X	131 C 12139 X
30 A	3.18 mm	132 C 12049 X	51	131 C 12049 X	132 A 12049 X	71	131 A 12049 X	131 C 12149 X
40 A	3.75 mm	132 C 12059 X	52	131 C 12059 X	132 A 12059 X	72	131 A 12059 X	131 C 12159 X

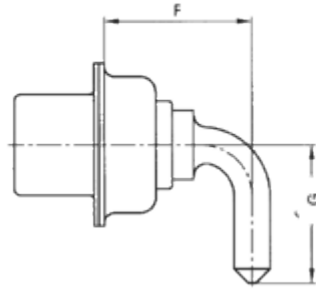
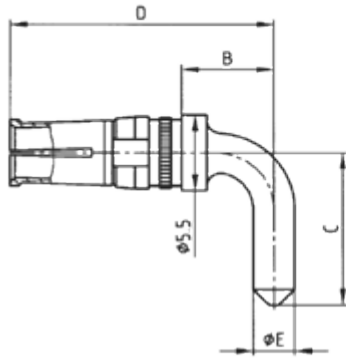
Quality Class 1 = C = 30 micro inch gold plating mating side
Quality Class 3 = A = hard gold plated



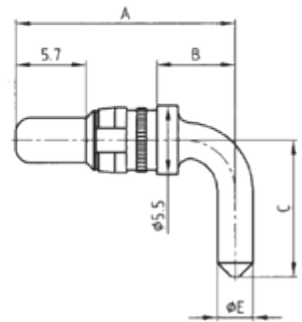
Combination D-Sub
High power contacts for solder pin angled

Directive 2002/95/EC
"RoHS"
Compliant

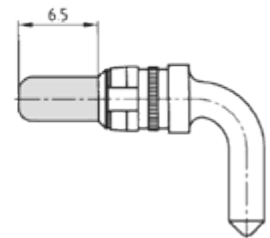
Socket contact



Plug contact



Premating plug contact

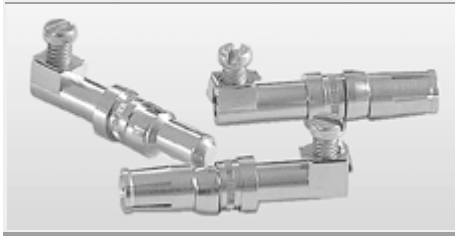


Shellsize	Current Rating	Termination type	A	B	C	D	ØE	F	G
1-4	15 A	55	14.54	3.00	10.50	14.68	1.90	8.35	10.50
1-4	20 A	56	17.84	6.30	11.00	17.98	2.85	11.65	11.00
1-4	30 A	57	26.54	15.00	9.50	26.68	3.20	20.35	9.50
1-4	40 A	58	17.84	6.30	11.00	17.98	3.75	11.65	11.00
5	20 A	66	20.39	8.85	14.00	20.53	2.85	14.20	12.58
5	30 A	67	20.39	8.85	14.00	20.53	3.20	14.20	12.58
5	30 A	65	26.54	15.00	13.50	26.68	3.20	20.35	12.08
5	40 A	60	20.39	8.85	14.00	20.53	3.75	14.20	12.58

Current Rating	Shell size	Quality class 1			Quality class 3			Plug premating contact
		Socket contact	Termination type	Plug contact	Socket contact	Termination type	Plug contact	
15 A	1-4	132 C 13009 X	55	131 C 13009 X	132 A 13009 X	59	131 A 13009 X	131 C 13109 X
20 A	1-4	132 C 13019 X	56	131 C 13019 X	132 A 13019 X	73	131 A 13019 X	131 C 13119 X
30 A	1-4	132 C 13029 X	57	131 C 13029 X	132 A 13029 X	74	131 A 13029 X	131 C 13129 X
40 A	1-4	132 C 13039 X	58	131 C 13039 X	132 A 13039 X	75	131 A 13039 X	131 C 13139 X
20 A	5	132 C 13060 X	66	131 C 13060 X	132 A 13060 X	81	131 A 13060 X	131 C 13160 X
30 A	5	132 C 13070 X	67	131 C 13070 X	132 A 13070 X	82	131 A 13070 X	131 C 13170 X
30 A	5	132 C 13059 X	65	131 C 13059 X	132 A 13059 X	85	131 A 13059 X	131 C 13159 X
40 A	5	132 C 13049 X	60	131 C 13049 X	132 A 13049 X	77	131 A 13049 X	131 C 13149 X

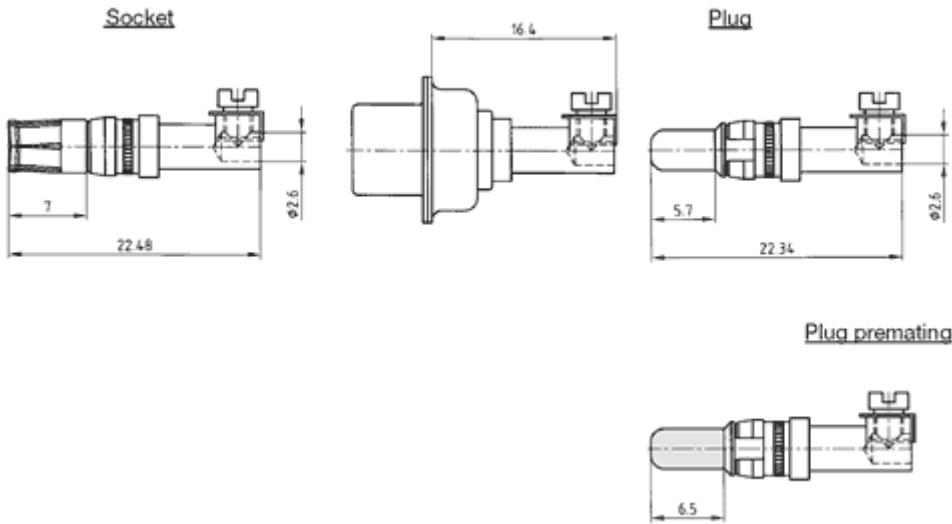
Quality Class 1 = C = 30 micro inch gold plating mating side

Quality Class 3 = A = hard gold plated



Combination D-Sub
High power contacts
with screw termination

Directive 2002/95/EC
"RoHS"
Compliant

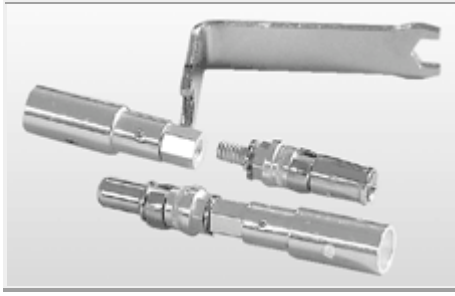


**Please make sure, if you assemble the contacts
by yourself that all are in the same position**

Wire Size	Current Rating	Quality class 1			Quality class 3		Plug premating contact
		Socket contact	Termination type	Plug contact	Socket contact	Plug contact	
AWG 14	20 A	132 C 36009 X	91	131 C 36009 X	132 A 36009 X	131 A 36009 X	131 C 36109 X

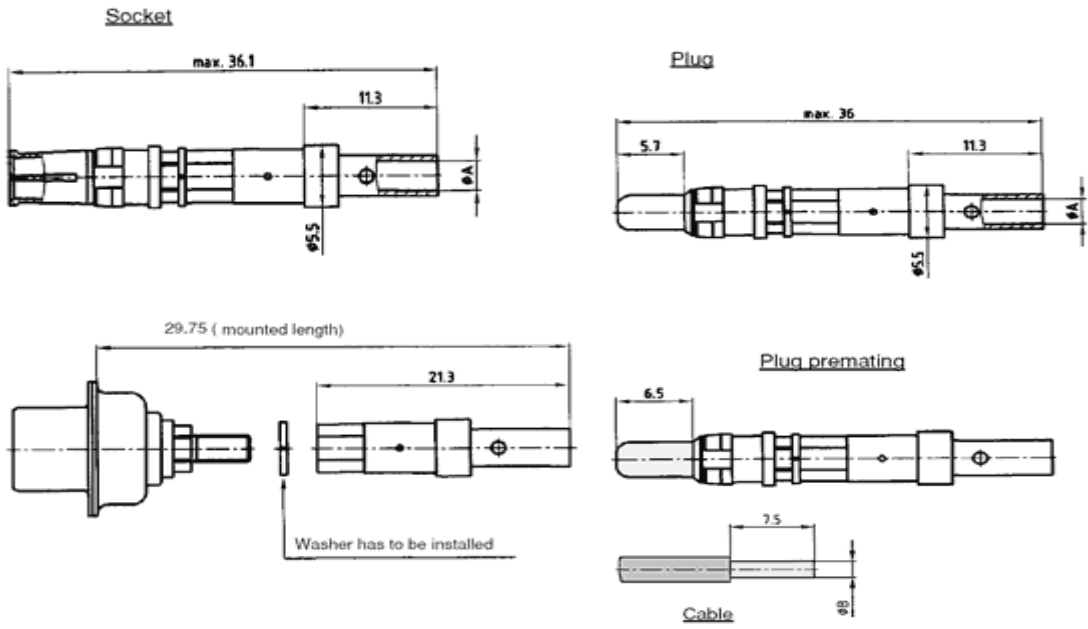
Quality Class 1 = C = 30 micro inch gold plating mating side

Quality Class 3 = A = hard gold plated



Combination D-Sub
High power contacts
screw- crimp version

Directive 2002/95/EC
"RoHS"
Compliant



Wire Size	Current Rating	ØA	ØB min	ØB max	mm ² min	mm ² max
AWG 16-20	10 A	1.70	0.90	1.70	0.60	2.30
AWG 12-14	20 A	2.60	1.80	2.60	2.80	5.3
AWG 10-12	30 A	3.70	2.20	3.70	3.80	10.70
AWG 8-10	40 A	4.60	2.90	4.60	6.60	16.60

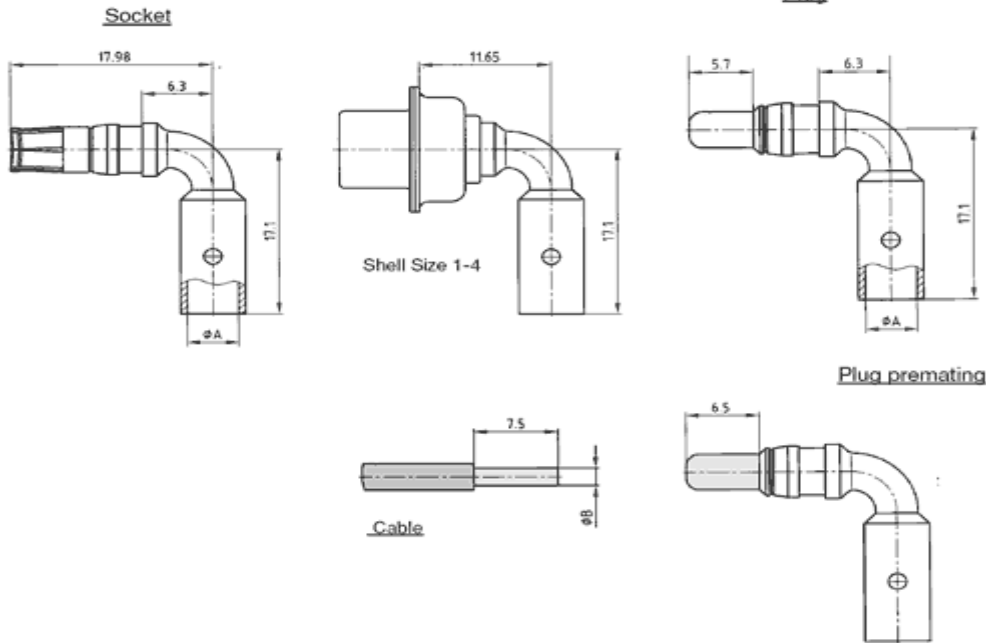
Wire Size	Current Rating	Quality class 1		Quality class 3		Plug pre-mating contact	Mounting tool
		Socket contact	Plug contact	Socket contact	Plug contact		
AWG 16-20	10 A	132 C 17019 X	131 C 17019 X	132 A 17019 X	131 A 17019 X	131 C 17119 X	360 X 00339 X
AWG 12-14	20 A	132 C 17029 X	131 C 17029 X	132 A 17029 X	131 A 17029 X	131 C 17129 X	360 X 00339 X
AWG 10-12	30 A	132 C 17039 X	131 C 17039 X	132 A 17039 X	131 A 17039 X	131 C 17139 X	360 X 00339 X
AWG 8-10	40 A	132 C 17049 X	131 C 17049 X	132 A 17049 X	131 A 17049 X	131 C 17149 X	360 X 00339 X

Quality Class 1 = C = 30 micro inch gold plating mating side
Quality Class 3 = A = hard gold plated



Combination D-Sub
High power contacts
angled
for crimp or solder

Directive 2002/95/EC
"RoHS"
Compliant



Wire Size	Current Rating	ØA	ØB min	ØB max	mm ² min	mm ² max	Crimp Plier 360 X 12269 X
AWG 16-20	10 A	1.70	0.90	1.70	0.60	2.30	1,40/1,25
AWG 12-14	20 A	2.60	1.80	2.60	2.80	5.3	1,85/1,65
AWG 10-12	30 A	3.70	2.20	3.70	3.80	10.70	2,30/2,05
AWG 8-10	40 A	4.60	2.90	4.60	6.60	16.60	2,30/2,05

Current Rating	Quality class 1			Quality class 3		Plug premating contact
	Socket contact	Termination type	Plug contact	Socket contact	Plug contact	
10 A	132 C 16019 X	C1	131 C 16019 X	132 A 16019 X	131 A 16019 X	131 C 16119 X
20 A	132 C 16029 X	C2	131 C 16029 X	132 A 16029 X	131 A 16029 X	131 C 16129 X
30 A	132 C 16039 X	C3	131 C 16039 X	132 A 16039 X	131 A 16039 X	131 C 16139 X
40 A	132 C 16049 X	C4	131 C 16049 X	132 A 16049 X	131 A 16049 X	131 C 16149 X

Quality Class 1 = C = 30 micro inch gold plating mating side
Quality Class 3 = A = hard gold plated

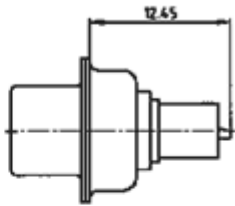
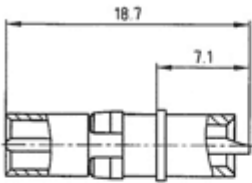


Combination D-Sub
High voltage contact
for solder straight and angled

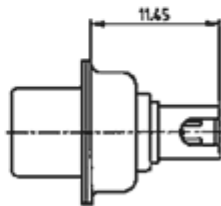
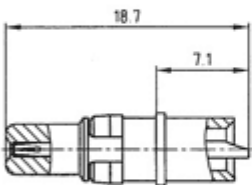
Directive 2002/95/EC
"RoHS"
Compliant

Socket straight

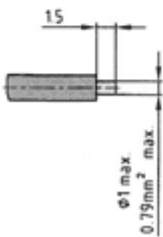
Socket



Plug

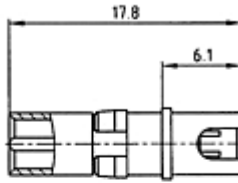


Cable

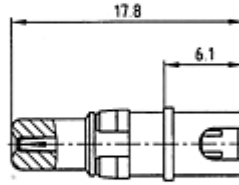


Socket angled

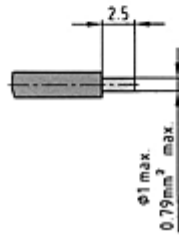
Socket



Plug



Cable



Part Numbers

Wire Size	solder straight		solder angled	
	Socket contact	Plug contact	Socket contact	Plug contact
AWG 20	132 J 14019 X	131 J 14019 X	132 J 14519 X	131 J 14519 X

J = 50 micro inch gold plating mating side - Other platings on request

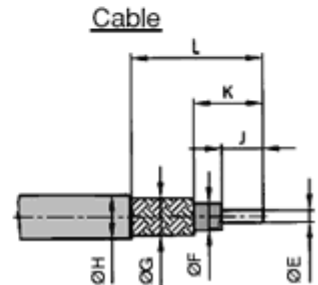
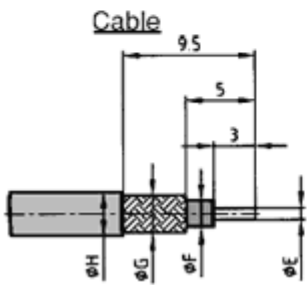
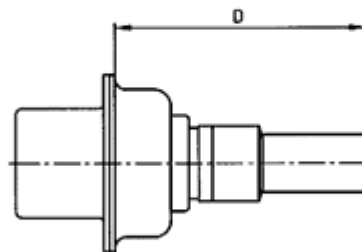
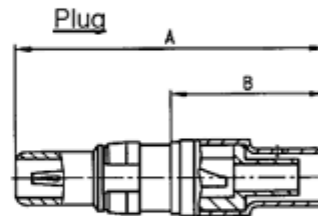
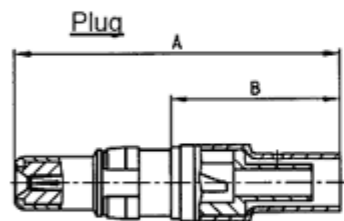
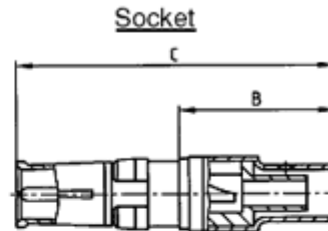
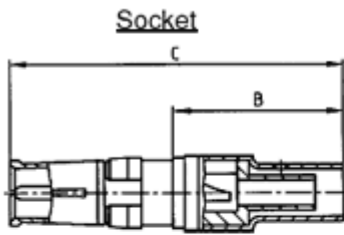


Combination D-Sub
Coaxial contacts for straight cable termination
inner conductor for solder termination,
outer conductor for crimp or solder termination

Directive 2002/95/EC
"RoHS"
Compliant

50 Ω

75 Ω



Note:

Both contacts supplied loose.

50 Ohm

Usable Cable RG	A	B	C	D max.	ØE max.	ØF	ØG max.	ØH max.
178/U,196A/U, 404U	22.5	11.2	23.0	17.55	0.85	1.2	1.4	2.3
174U,188A/U, 316U	22.5	11.2	23.0	17.55	0.85	1.9	2.3	3.2
180B/U	22.5	11.2	23.0	17.55	0.85	2.8	3.1	4.5
58C/U, 141A/U	26.3	14.8	26.8	20.15	1.00	3.0	3.6	5.2
316U double braided	23.5	12.2	24.0	17.55	0.85	1.9	2.7	3.2

75 Ohm

Usable Cable RG	A	B	C	D	ØE max.	ØF max.	ØG max.	ØH max.	J	K	L
179 B/U, 187 A/U	18.55	7.3	19.05	12.8	0.5	1.9	2.3	3.2	2.0	3.1	6.0
179 B/U, 187 A/U	22.5	11.2	23.0	16.7	0.5	1.9	2.3	3.2	3.0	5.0	9.5

Usable cable RG	50 Ω		Usable cable RG	75 Ω	
	Socket contact	Plug contact		Socket contact	Plug contact
178 U, 196 A/U, 404 U	132 J 20019 X	131 J 20019 X	179 B/U, 187 A/U, (B=7,3)	132 J 30019 X	131 J 30019 X
174U,188 A/U,316 U	132 J 20029 X	131 J 20029 X	179 B/U, 187 A/U, (B=11,2)	132 J 30029 X	131 J 30029 X
180 B/U	132 J 20039 X	131 J 20039 X			
58 C/U,141 A/U	132 J 20049 X	131 J 20049 X			
316 U double braided	132 J 20059 X	131 J 20059 X			

J = 50 micro inch gold plating mating side (Inner conductor) - 30 micro inch gold plating mating side (Outer conductor)

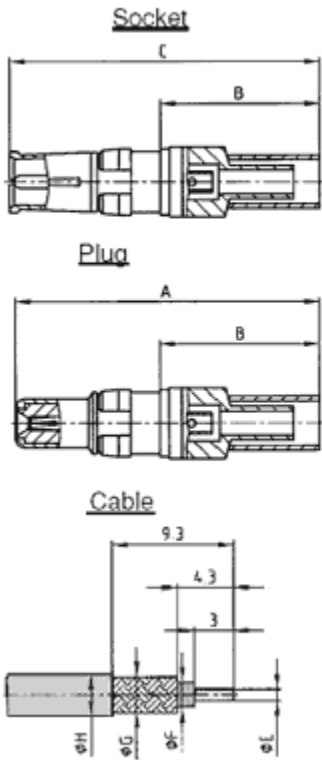
- Other platings on request



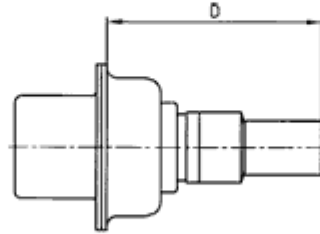
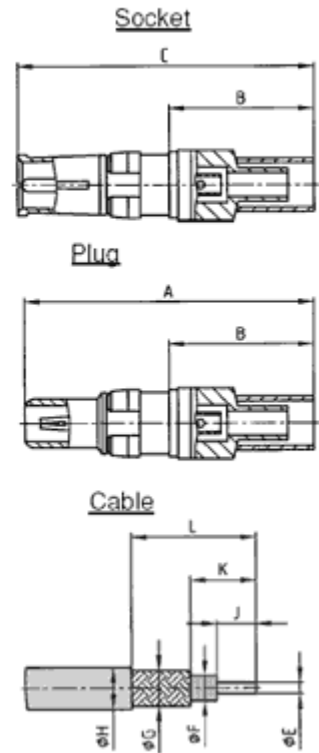
Combination D-Sub
Coaxial contacts for straight cable termination
inner and outer conductor for crimp termination

Directive 2002/95/EC
„RoHS“
Compliant

50 Ω



75 Ω



Note:

Both contacts supplied loose.

50 Ohm

Usable Cable	A	B	C	D max.	ØE max.	ØF	ØG max.	ØH max.
174U,188 A/U, 316U	22.5	11.2	23.0	16.6	0.6	1.9	2.3	3.2
316 U doppelt geschirmt	22.5	11.2	23.0	16.6	0.6	1.9	3.0	3.8
58 C/U, 141 A/U	22.2	10.9	22.7	16.3	1.3	3.7	4.3	5.2

75 Ohm

Usable Cable RG	A	B	C	D	ØE max.	ØF max.	ØG max.	ØH max.	J	K	L
179 B/U, 187 A/U	22.45	11.2	22.95	16.7	0.6	1.9	2.3	3.2	3.0	4.3	9.3
180 B/U	21.65	10.4	22.15	15.9	0.6	2.8	3.2	4.5	3.0	4.3	8.8

Usable cable RG	50 Ω	
	Socket contact	Plug contact
174 U, 188 A/U, 316 U	132 J 21019 X	131 J 21019 X
316 U double braided	132 J 21029 X	131 J 21029 X
58 C/U, 141 A/U	132 J 21039 X	131 J 21039 X

Usable cable RG	75 Ω	
	Socket contact	Plug contact
179 B/U, 187 A/U	132 J 31019 X	131 J 31019 X
180 B/U	132 J 31029 X	131 J 31029 X

J = 50 micro inch gold plating mating side (Inner conductor) - 30 micro inch gold plating mating side (Outer conductor)

- Other platings on request

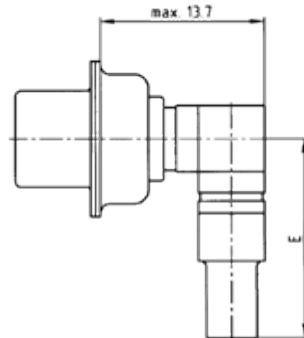
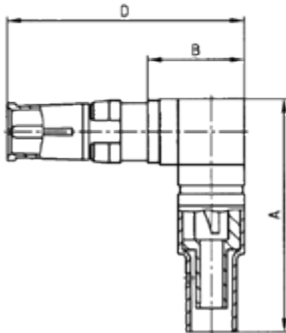


Combination D-Sub
Coaxial contacts for angled cable termination
inner conductor for solder termination,
outer conductor for crimp or solder termination

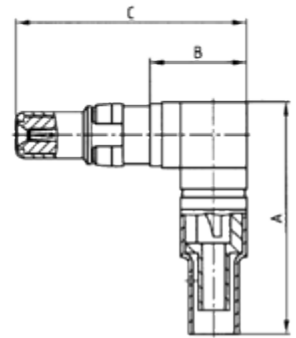
Directive 2002/95/EC
"RoHS"
Compliant

50 Ω

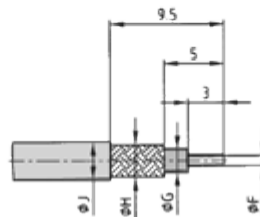
Socket contact



Plug contact



Cable stripping dimensions



Note:
Contacts supplied loose.

Usable Cable	A	B	C	D	E	ØF max.	ØG max.	ØH max.	ØJ max.
174U, 188 A/U, 316U	18.5	8.2	19.3	19.8	0.6	0.85	1.9	2.3	3.2
178B/U, 196 A/U, 404 U	18.5	8.2	19.3	19.8	0.6	0.85	1.2	1.4	2.3
316 U double braided	19.5	8.2	19.3	19.8	1.3	0.85	1.9	2.7	3.5

Usable cable RG	Socket contact	Plug contact
174 U, 188 A/U, 316 U	132 J 22019 X	131 J 22019 X
178 B/U, 196 A/U, 404 U	132 J 22029 X	131 J 22019 X
316 U double braided	132 J 22039 X	131 J 22019 X

J = 50 micro inch gold plating mating side (Inner conductor) - 30 micro inch gold plating mating side (Outer conductor)

- Other platings on request

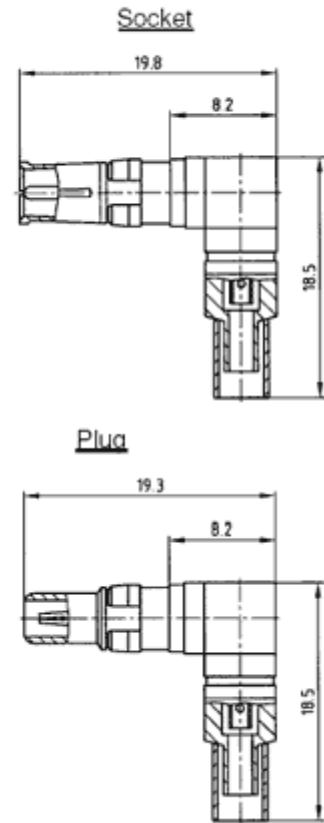
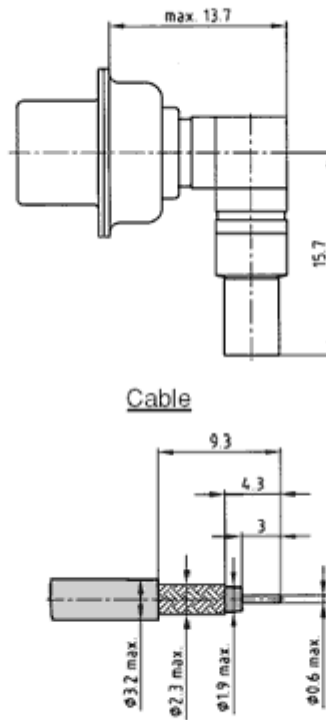
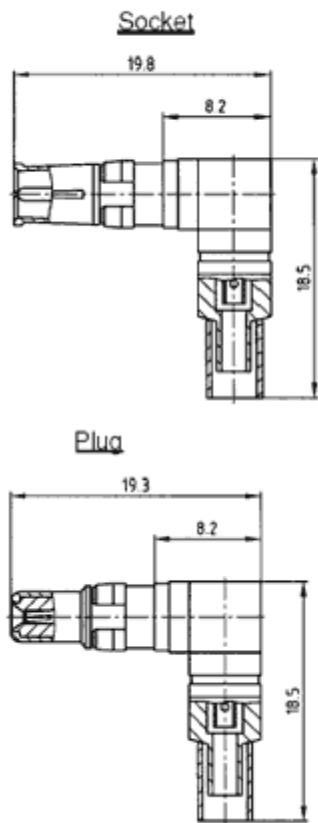


Combination D-Sub
Coaxial contacts for angled cable termination
inner and outer conductor for crimp termination

Directive 2002/95/EC
„RoHS“
Compliant

50 Ω

75 Ω



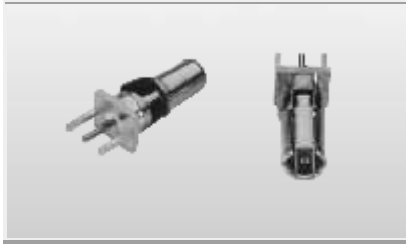
Note:

Contacts supplied loose.

Usable cable RG	50 Ω	
	Socket contact	Plug contact
174 U, 188 A/U, 316 U	132 J 23019 X	131 J 23019 X

Usable cable RG	75 Ω	
	Socket contact	Plug contact
179 B/U, 187 A/U	132 J 33019 X	131 J 33019 X

J = 50 micro inch gold plating mating side (Inner conductor) - 30 micro inch gold plating mating side (Outer conductor)
- Other platings on request



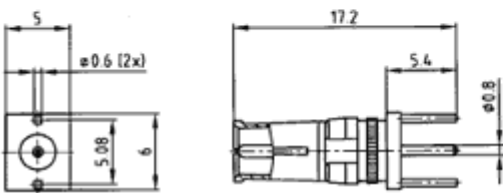
Combination D-Sub
Coaxial contacts for straight PCB termination
with 3 solder pins

Directive 2002/95/EC
„RoHS“
Compliant

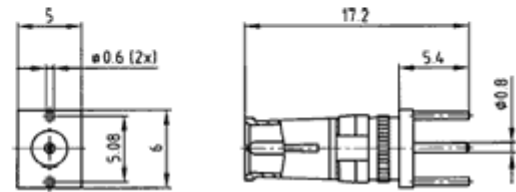
50 Ω

75 Ω

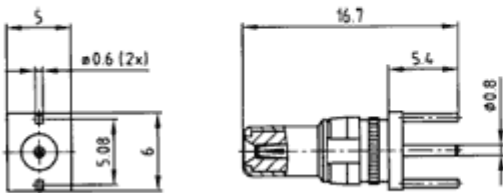
Socket



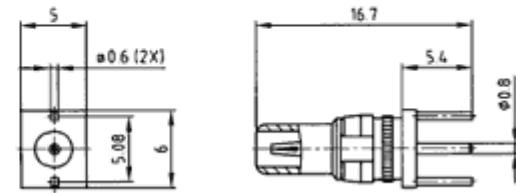
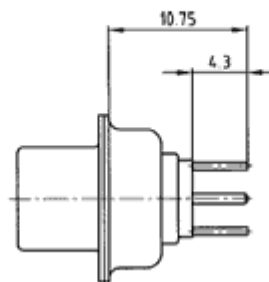
Socket



Plug



Plug



Socket contact	50 Ω Termination type	Plug contact	Socket contact	75 Ω Termination type	Plug contact
132 J 24019 X	76	131 J 24019 X	132 J 34019 X	86	131 J 34019 X

J = 50 micro inch gold plating mating side (Inner conductor) - 30 micro inch gold plating mating side (Outer conductor)

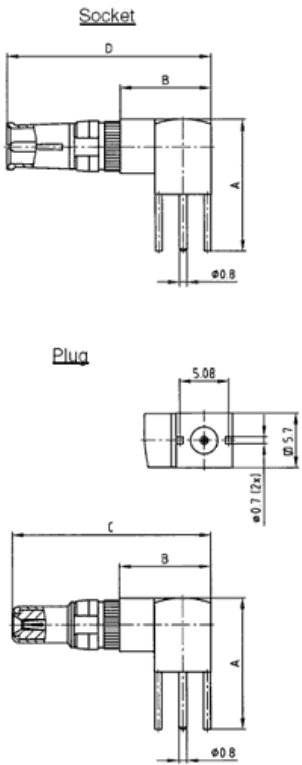
- Other platings on request



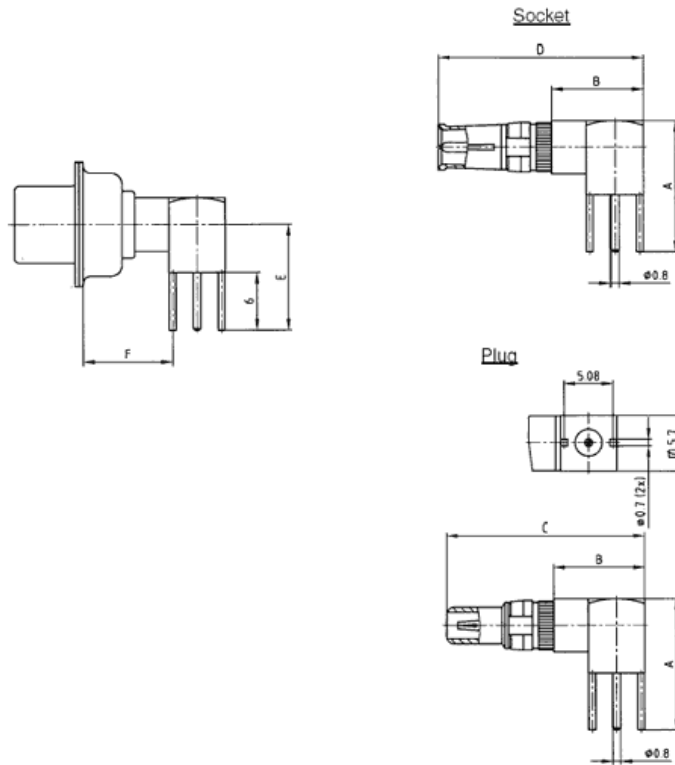
Combination D-Sub
Coaxial contacts for angled PCB termination
with 3 solder pins

Directive 2002/95/EC
"RoHS"
Compliant

50 Ω



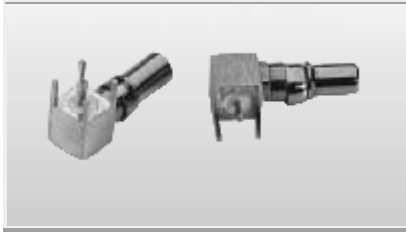
75 Ω



Contacts used in shell size	A	B	C	D	E	F
1-4	13.8	9.3	20.7	21.2	11.0	9.3
5	16.8	11.8	23.2	23.7	14.0	11.8

shell size	50 Ω Termination type			shell size	75 Ω Termination type		
	Socket contact	Plug contact	Plug contact		Socket contact	Plug contact	Plug contact
1-4	132 J 25019 X	78	131 J 25019 X	1-4	132 J 35019 X	88	131 J 35019 X
5	132 J 25029 X	79	131 J 25019 X	5	132 J 35029 X	89	131 J 35019 X

J = 50 micro inch gold plating mating side (Inner conductor) - 30 micro inch gold plating mating side (Outer conductor)
- Other platings on request



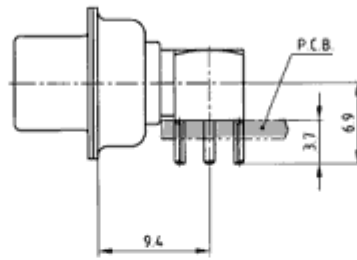
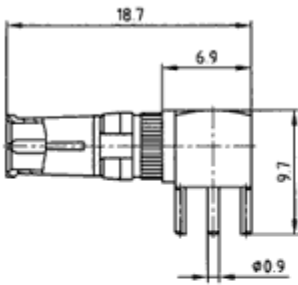
Combination D-Sub
Coaxial contacts for angled PCB termination
with 5 solder pins

Directive 2002/95/EC
"RoHS"
Compliant

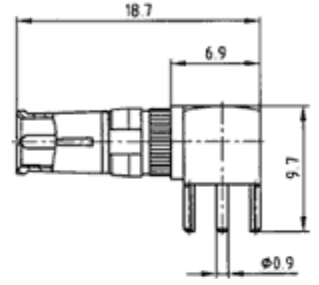
50 Ω

75 Ω

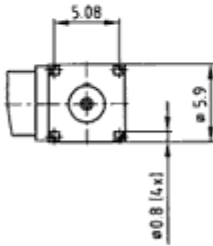
Socket



Socket

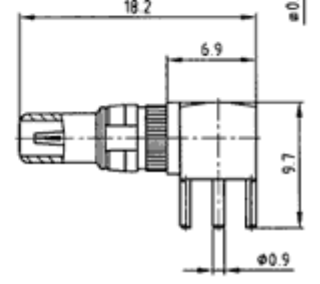
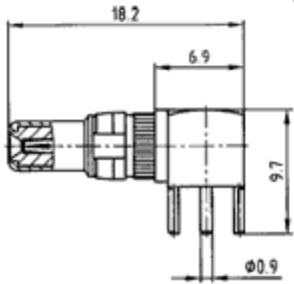
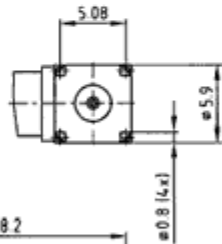


Plug



Note:
For mounting connector on edge of PCB
without metal bracket.

Plug



Socket contact	50 Ω Termination type	Plug contact	Socket contact	75 Ω Termination type	Plug contact
132 J 25519 X	80	131 J 25519 X	132 J 35519 X	90	131 J 35519 X

J = 50 micro inch gold plating mating side (Inner conductor) - 30 micro inch gold plating mating side (Outer conductor)
- Other platings on request