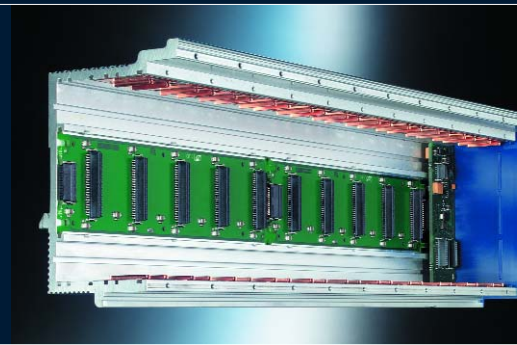
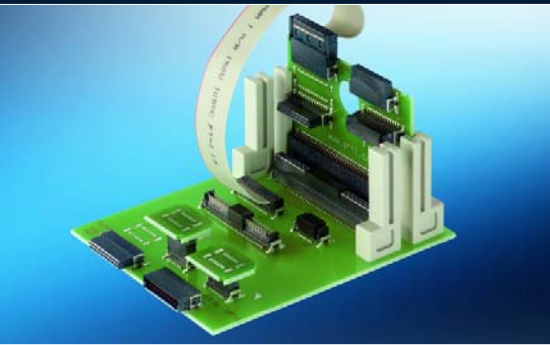


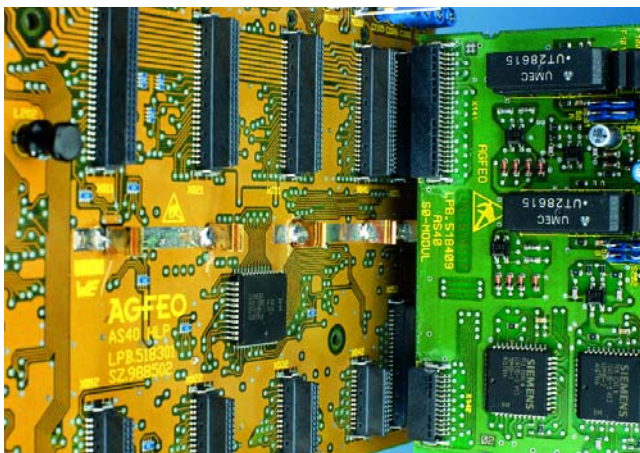
1.27 mm Connectors SMC



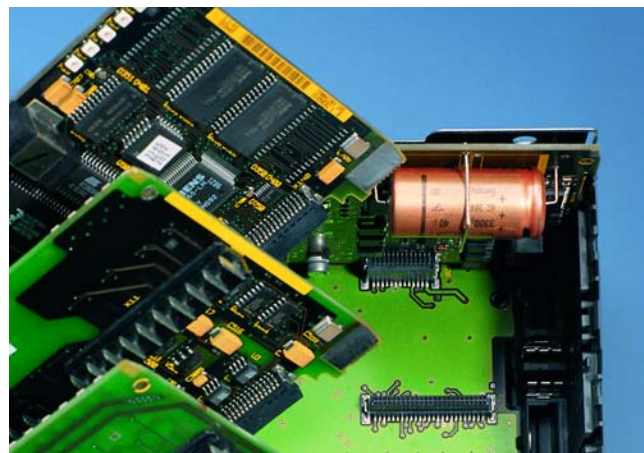
Applications	2
Technical Features	3
SMC at a Glance	4
Mating Conditions	6
Stacking Dimensions	7
Overhead Soldering	8
ERNIPRESS® Technology	9
Board-on IDC Assembly Instructions	10
Electrical and Mechanical Characteristics	11
Right Angle Male Type B	14
Right Angle Male Type B with Locking System	16
Vertical Male Type Q	18
Vertical Male Pressfit Type Q	22
Right Angle Female Type Q	24
Right Angle Female Type Q with Locking System	26
Vertical Female Type B	28
Board-on IDC	33
Female Cable Assemblies	36
Part Number Index	38

1.27 mm Connectors SMC

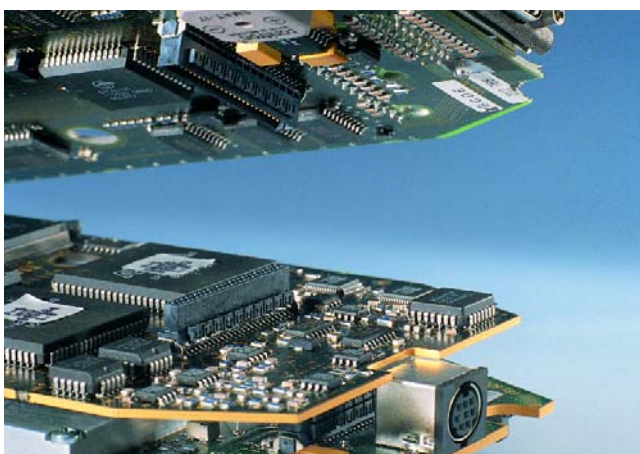
Applications



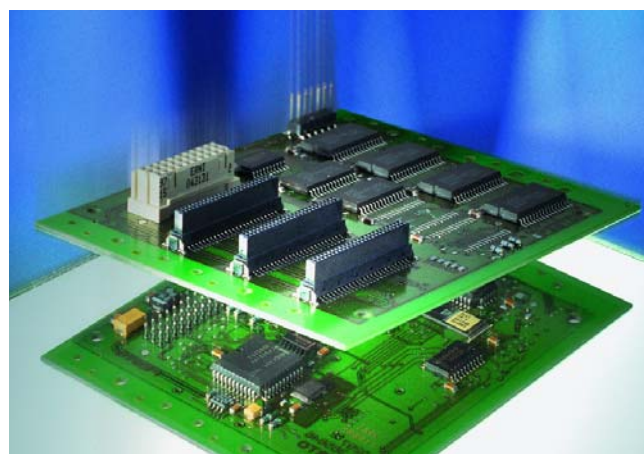
Motherboard to daughter card in an ISDN equipment



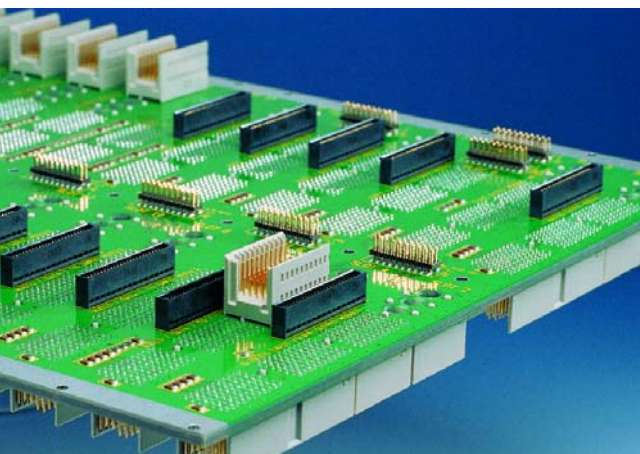
Motherboard to daughter card for industrial PLCs



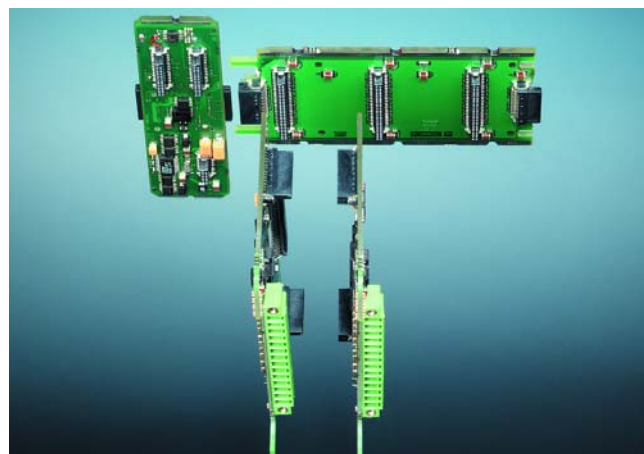
Mezzanine cards in mobile phone test equipment



Mezzanine cards for industrial automation



Board to cable for video coding backplane

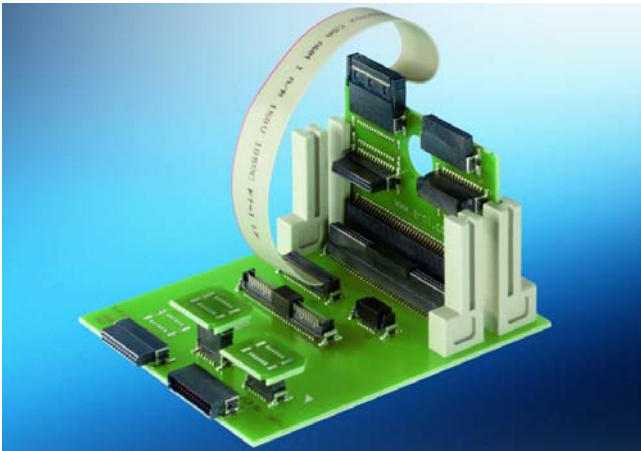


Versatile configurations in an industrial controller

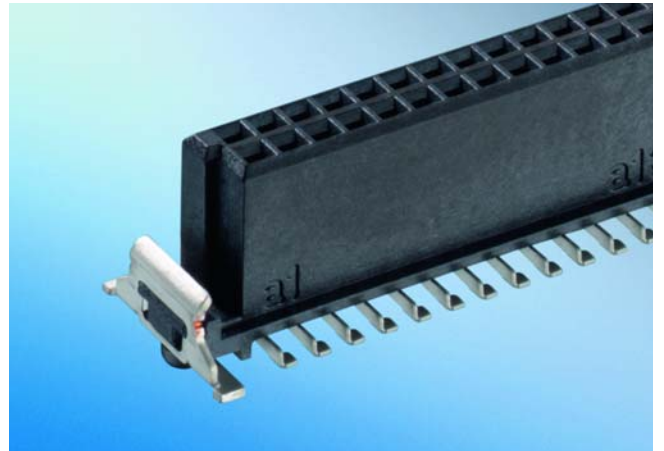


1.27 mm Connectors SMC

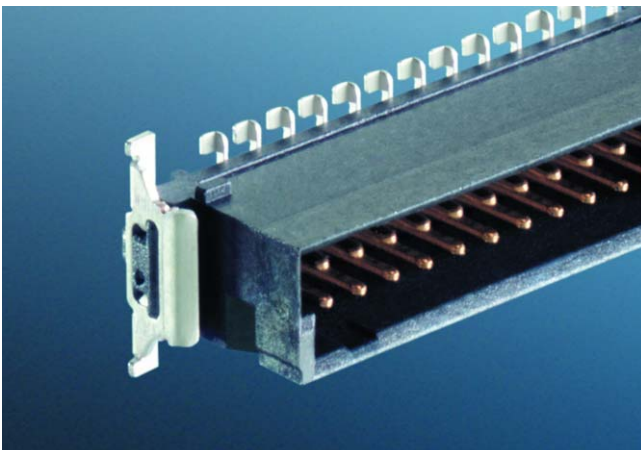
Technical Features



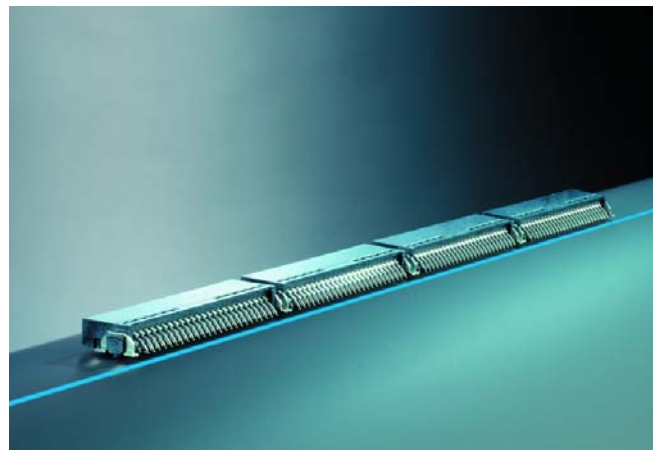
Board-to-board and board-to-cable applications



Wide entry area alignment tolerance



Polarization of the mating face



Guaranteed coplanarity



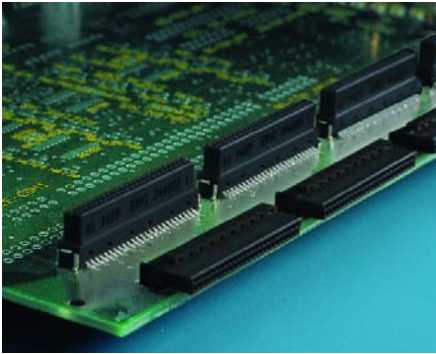
Various pin versions



Rear I/O pressfit connectors on backplanes

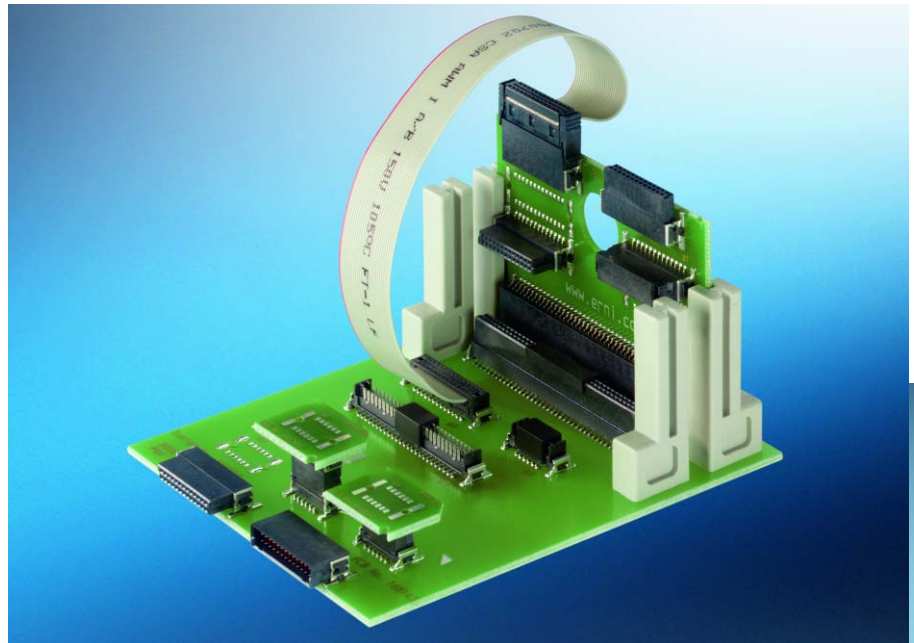
1.27 mm Connectors SMC

SMC at a Glance



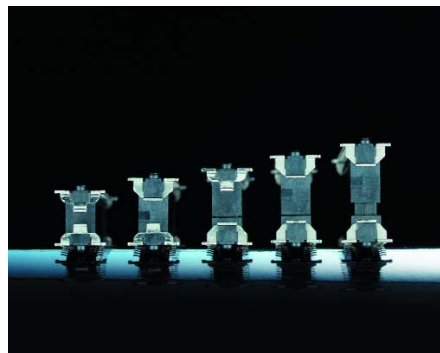
Subassembly Design - Flexibility in Application

Straight and right angle male and female connectors, and other available options permit many configurations and variations for maximum flexibility in designing modules and manufacturing boards.



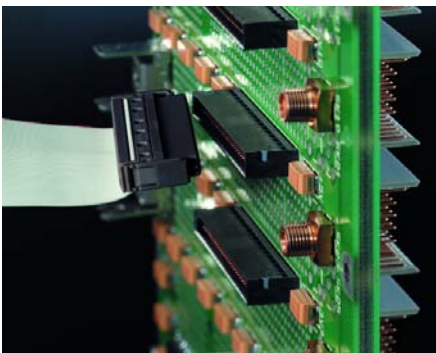
Solution of Choice for Modern Subassembly Applications

Printed circuit board solutions for all kind of branches.



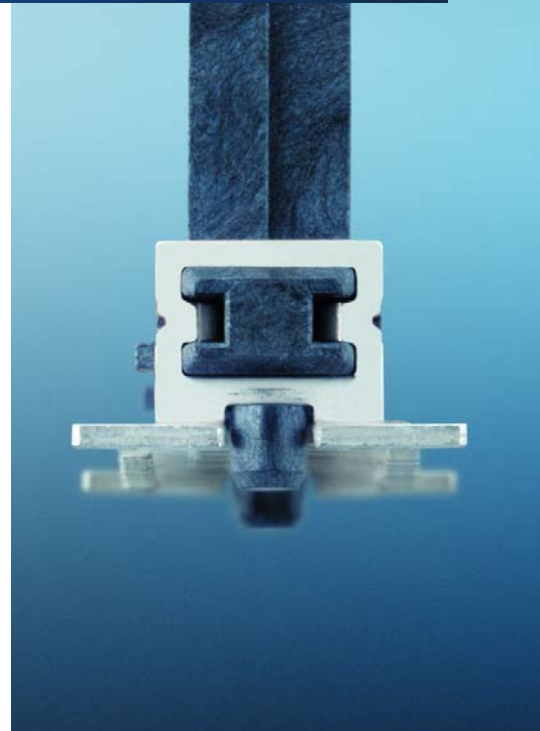
Variable Board-to-Board Height

Flexible Board-to-Board heights ranging from 8.0 mm to 20.0 mm for subassembly solutions.



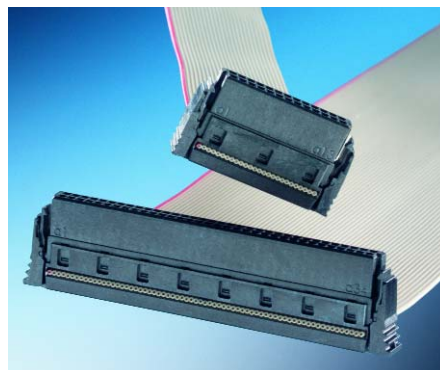
Rear I/O connector on Multi-layer Backplanes

The pressfit versions of the SMC male connectors are ideal for transferring I/O signals on the rear side of a backplane.



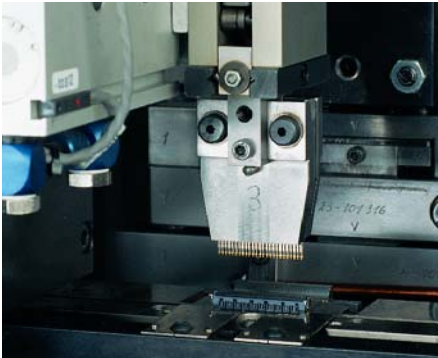
Simple I/O Signal Transfer with "Snap-Lock" Female Cable Connector

The female IDC cable connectors with snap-lock feature make transferring I/O signals easy and also saves space by eliminating the need for ejector latches.



1.27 mm Connectors SMC

SMC at a Glance

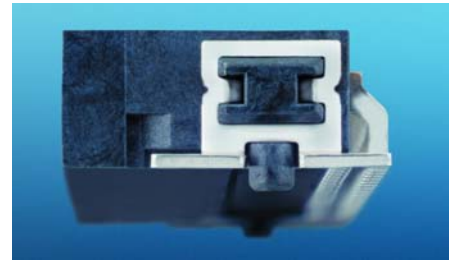


Completely Automated Manufacturing of SMC Connectors

SMC connectors are manufactured using controlled state of the art automated manufacturing equipment.

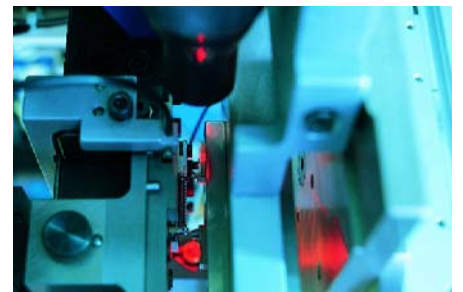
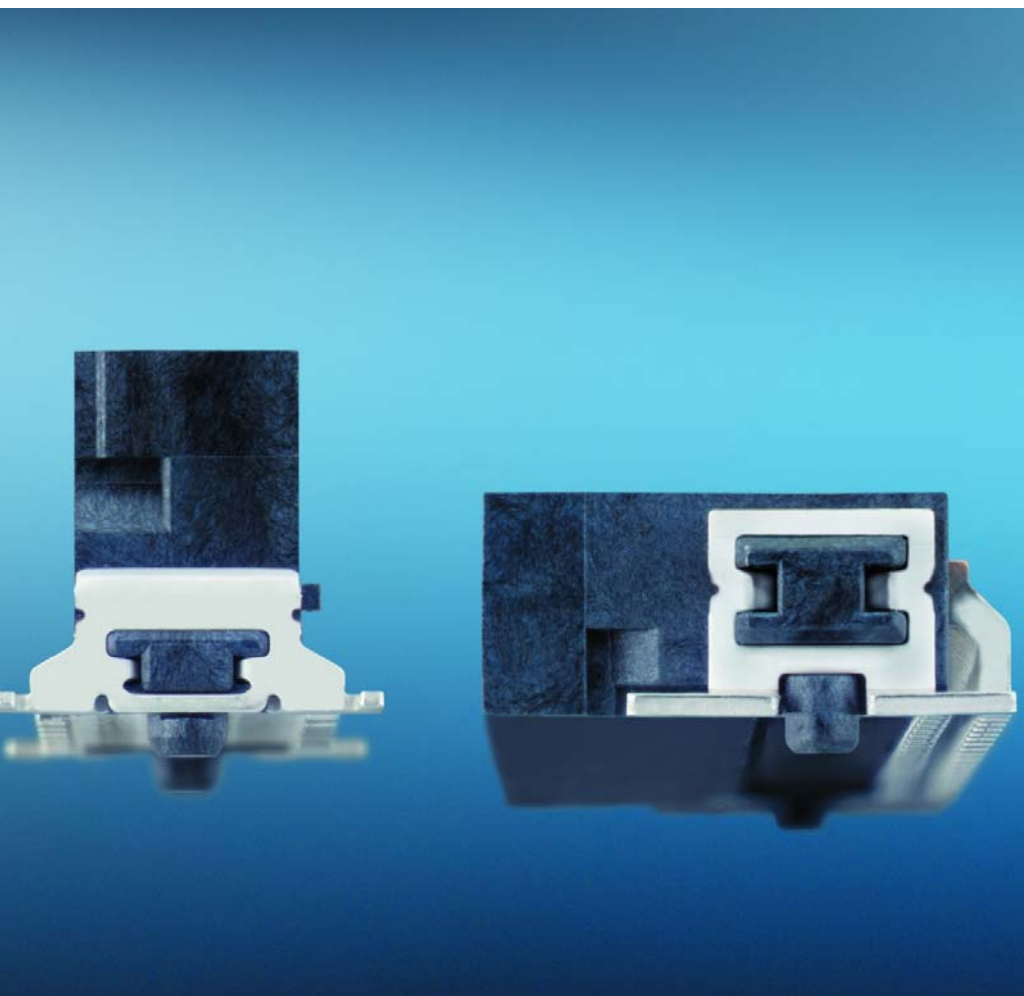
Controlled SMT Reflow Soldering Process

The heat-resistant thermoplastic insulation body and precision coplanar contacts permit a controlled SMT soldering process.



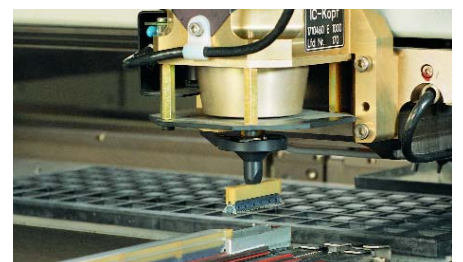
Reliable Insertion and Removal

The metal SMT mounting clip ensures a reliable connection to the printed circuit board. As a result of its special design, it can handle high insertion and withdrawal forces. The integrated metal clips are soldered during the SMT process, thus eliminating the need for an additional operation such as rivets.



Quality Check

A full inspection of the female contact apertures and coplanarity of our SMC connectors guarantees maximum reliability for your printed circuit boards.



Safe Packaging for Fully Automated Assembly

The antistatic tape and reel packaging not only protects the high-precision contacts of our SMC connectors, but also permits placement of connectors by automated pick and place equipment.

Easy Recognition and Secure Handling

The black insulation body ensures easy visual recognition by the automatic pick and place equipment.

