



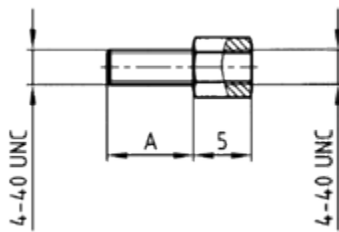
## Hex Locking Screws and Hardware

Directive 2002/95/EC  
„RoHS“  
Compliant

**Note: Yellow chromate plating version is not RoHS Compliant**

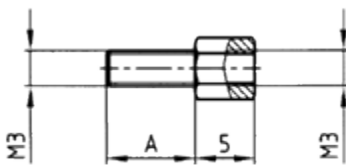
### Part Numbers

Hex bolt type 11



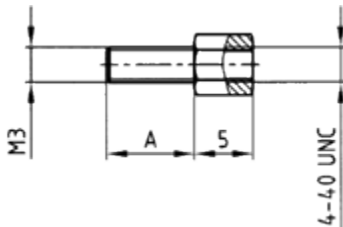
Dim. A (mm)	Separate Bolt Nickel Plated	Packing Unit pcs.	Hex Bolt Set Packed		Packing Unit Set
			Yellow Chromate	Nickel Plated	
6.50	740-353770	200			
8.00	740-331370	200	160X10269X	160X10359X	100
11.00	740-331570	200			
13.00	740-331870	200			
14.00	740-331670	200		160X10639X	100

Hex bolt type 12



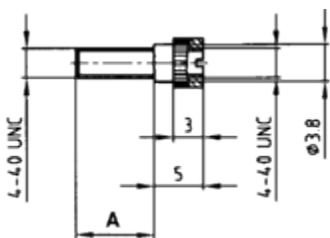
Dim. A (mm)	Separate Bolt Nickel Plated	Packing Unit pcs.	Hex Bolt Set Packed Nickel Plated	Packing Unit Set
4.00	740-354470	200		
7.00	740-320570	200	160X10529X	100
8.00	740-342470	200		
13.00	740-365270	200		

Hex bolt type 13



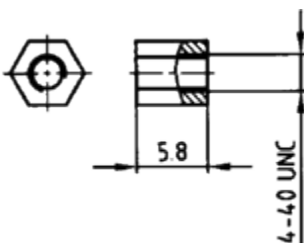
Dim. A (mm)	Separate Bolt Nickel Plated	Packing Unit pcs.	Hex Bolt Set Packed Nickel Plated	Packing Unit Set
4.00	740-354370	200		
7.00	740-320170	200		
13.00	740-344970	200	160X10369X	

Screw locking type 2



Dim. A (mm)	Hex Bolt Set Packed Nickel Plated	Packing Unit Set
	8.00	

Screw locking type 3



Hex Bolt Set Packed Nickel Plated	Packing Unit Set
160X10379X	200

washer



spring ring



		Packing Unit pcs.
washer	765-329670	200
spring ring	765-329570	200
nut UNC 4-40	765-329770	200
nut M3	765-329870	200

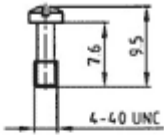
1 set consists of: 2 bolts, 2 washers, 2 spring rings, 2 nuts

Screw locking  
with Clamp

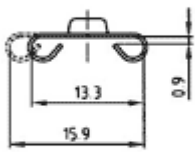
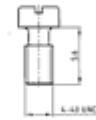
Directive 2002/95/EC  
„RoHS“  
Compliant



**Type 1**



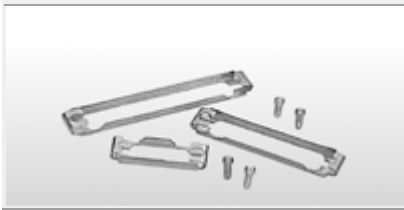
**Type 2**



**Material:**  
STEEL  
NICKEL PLATED

**Material:**  
Stainless steel

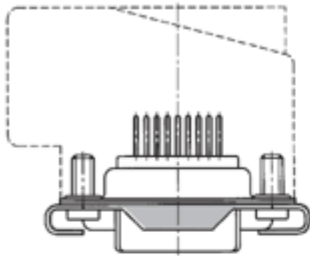
**1 set consists of:**  
2 clamps, 2 screws



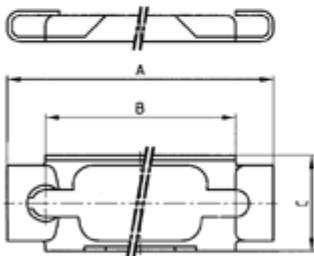
# Slide-lock With Locking Bolts

Directive 2002/95/EC  
"RoHS"  
Compliant

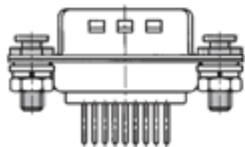
Slide-lock type 3



- A set consists of:**
- 1 frame
  - 2 self-tapping screws  
(for plastic and metal)

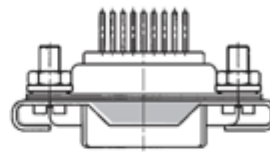


Locking bolt

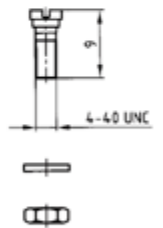
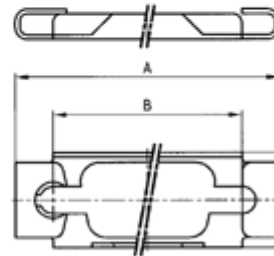


- A set consists of:**
- 2 locking bolts
  - 2 washers
  - 2 spring rings
  - 2 nuts

Slide-lock type 4



- A set consists of:**
- 1 frame
  - 2 screws UNC 4-40
  - 2 washers
  - 2 nuts UNC 4-40



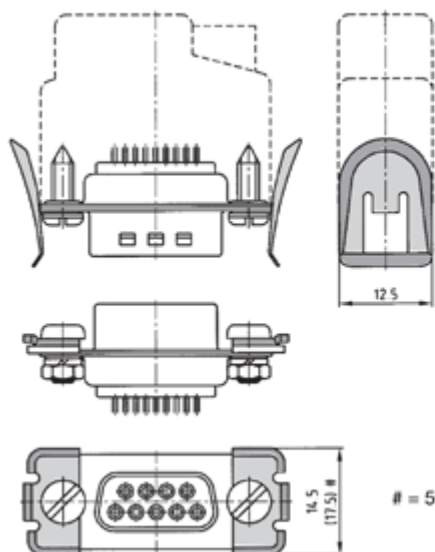
No. of Pos.	A	B	C
9	35.10	27.0	11.7
15	43.30	35.0	11.7
25	57.25	49.0	11.7
37	74.10	65.0	12.7
50	71.30	62.0	15.5



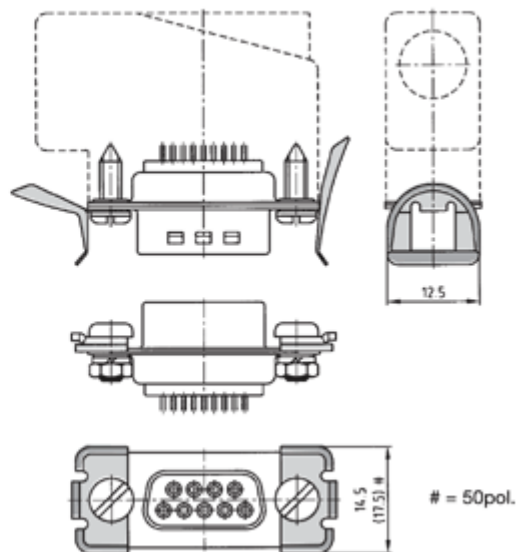
## Snap Locking System

Directive 2002/95/EC  
„RoHS“  
Compliant

for straight cable exit



for side cable exit

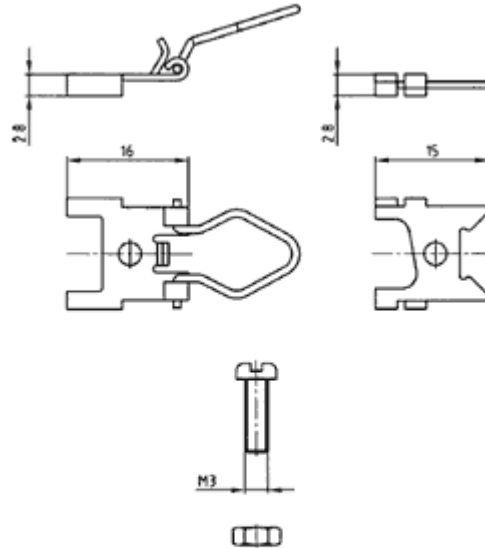
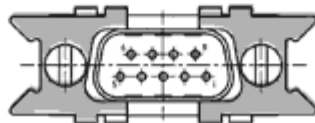
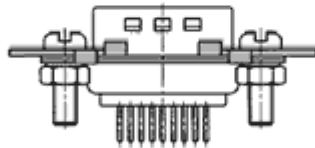
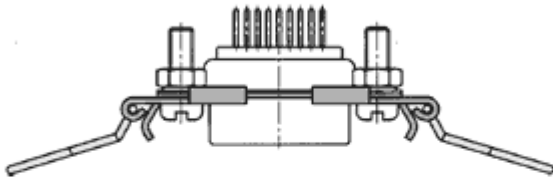
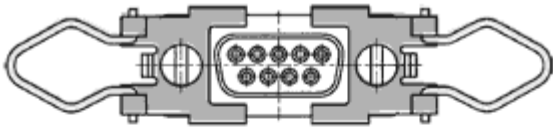


**A set consists of:**

- 2 locking-levers
- 2 self-tapping screws
- 2 screen hooks
- 2 screws M 3
- 2 spring rings
- 2 nuts M 3

## Spring locking

Directive 2002/95/EC  
„RoHS“  
Compliant



- 1 set of spring locking consists of:**
- 2 metal bows
  - 2 metal bow fastener
  - 2 clamps
  - 4 screws M 3
  - 4 nuts M 3

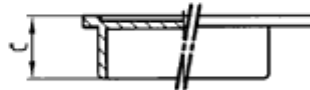
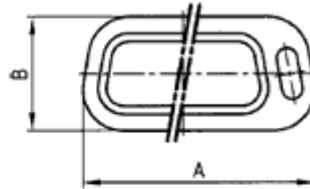
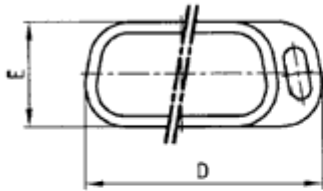


Plastic Dust Cap for all D-Subminiature size

Directive 2002/95/EC  
 „RoHS“  
 Compliant

for socket connector

for plug connector



**Material:** TPE UL 94 V-O, black

No. of Pos.	A <sup>-0.5</sup>	B	C <sup>±0.1</sup>	D <sup>+0.5</sup>	E <sup>-0.2</sup>	F <sup>±0.1</sup>
9	22.50	11.0	6.1	22.90	10.0	6.7
15	30.65	11.0	6.1	31.40	10.0	6.7
25	44.40	11.0	6.1	44.70	10.0	6.7
37	60.75	11.0	6.1	61.20	10.0	6.7
50	58.15	13.7	6.1	58.79	12.80	6.7

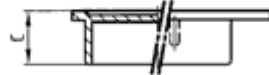
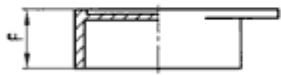
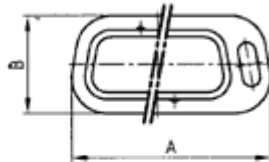
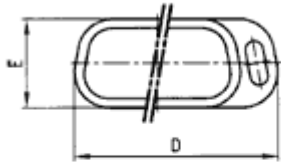


Shielded Plastic Cap for EMI/RFI as well as ESD Resistant and Anti-static

Directive 2002/95/EC  
"RoHS"  
Compliant

for socket connector

for plug connector



**Technical DATA:**

Material: ABS, TPE UL 94 V-O  
 Plating: Plastic with nickle plating over Cu  
 Temperature range: -35 °C to +85 °C

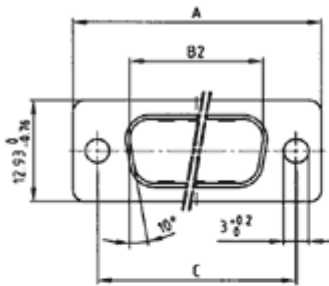
No.of Pos.	A <sup>-0.5</sup>	B	C <sup>±0.1</sup>	D <sup>+0.5</sup>	E <sup>-0.2</sup>	F <sup>±0.1</sup>
9	22.50	11.0	6.1	22.90	10.0	6.7
15	30.65	11.0	6.1	31.40	10.0	6.7
25	44.40	11.0	6.1	44.70	10.0	6.7
37	60.75	11.0	6.1	61.20	10.0	6.7
50	58.15	13.7	6.1	58.79	12.80	6.7



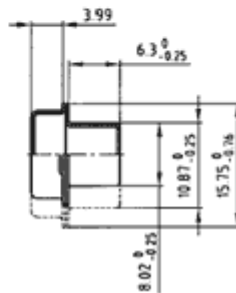
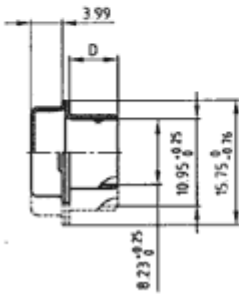
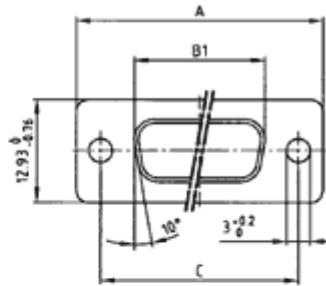
## Covered Screen Cap for EMI/RFI

Directive 2002/95/EC  
"RoHS"  
Compliant

for socket connector



for plug connector

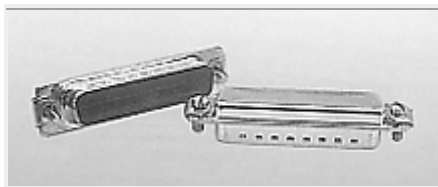


Dimensions in (---) = 50 pos.

### Technical Data:

Material: Steel, tin plated

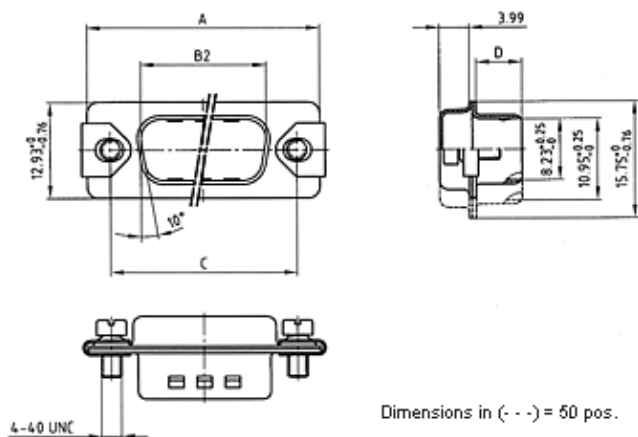
No. of pos.	A -0.76	B <sub>1</sub> -0.25	B <sub>2</sub> <sup>+0.25</sup>	C	D -0.30
9	31.19	16.46	16.79	25.00 <sup>+0,12</sup> <sub>-0,10</sub>	6.12
15	39.52	24.79	25.12	33.30 <sup>+0,15</sup>	6.12
25	53.42	38.50	38.84	47.04 <sup>±0,13</sup>	5.99
37	69.70	54.96	55.30	63.50 <sup>+0,13</sup> <sub>-0,11</sub>	5.99
50	67.31	52.55	52.68	61.10 <sup>+0,14</sup>	5.99



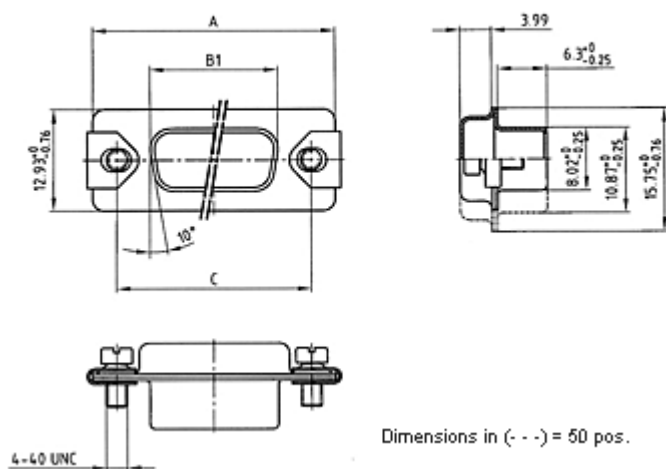
Covered screen cap  
with clamp and screw

Directive 2002/95/EC  
„RoHS“  
Compliant

for socket connector

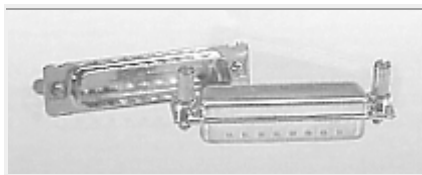


for plug connector



Technical Data:  
Material: Steel, tin plated

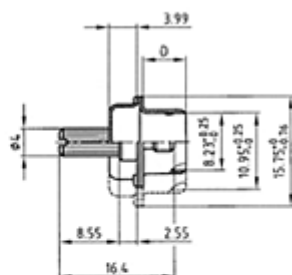
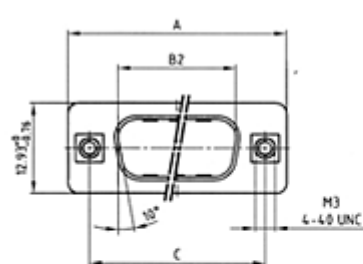
No. of pos.	A -0,76	B <sub>1</sub> -0,25	B <sub>2</sub> +0,25	C	D -0,30
9	31,19	16,46	16,79	25,00 <sup>+0,12</sup> <sub>-0,10</sub>	6,12
15	39,52	24,79	25,12	33,30 <sup>+0,15</sup>	6,12
25	53,42	38,50	38,84	47,04 <sup>+0,13</sup>	5,99
37	69,70	54,96	55,30	63,50 <sup>+0,13</sup> <sub>-0,11</sub>	5,99
50	67,31	52,55	52,68	61,10 <sup>+0,14</sup>	5,99



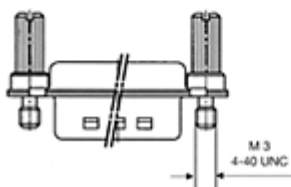
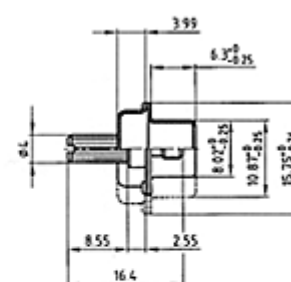
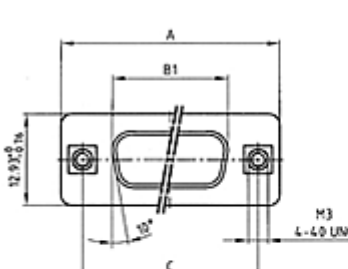
Covered screen cap  
with Jack screw

Directive 2002/95/EC  
"RoHS"  
Compliant

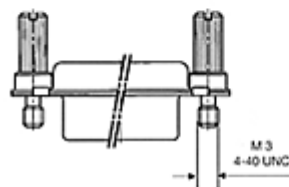
for socket connector



for plug connector



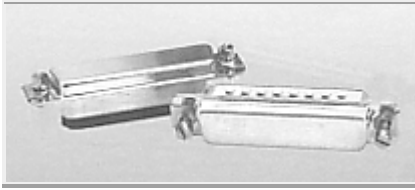
Dimensions in (---) = 50 pos.



Dimensions in (---) = 50 pos.

Technical Data:  
Material: Steel, tin plated

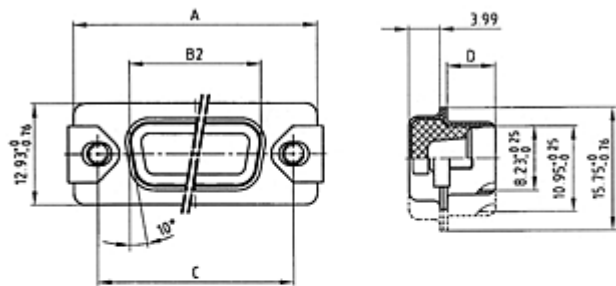
No. of pos.	A -0,76	B <sup>1</sup> -0,25	B <sup>2</sup> +0,25	C	D -0,30
9	31,19	16,46	16,79	25,00 <sup>+0,12</sup> <sub>-0,10</sub>	6,12
15	39,52	24,79	25,12	33,30 <sup>+0,15</sup>	6,12
25	53,42	38,50	38,84	47,04 <sup>+0,13</sup>	5,99
37	69,70	54,96	55,30	63,50 <sup>+0,13</sup> <sub>-0,11</sub>	5,99
50	67,31	52,55	52,68	61,10 <sup>+0,14</sup>	5,99



Water resistant  
shielded caps  
for EMI/RFI  
with clamp and screw

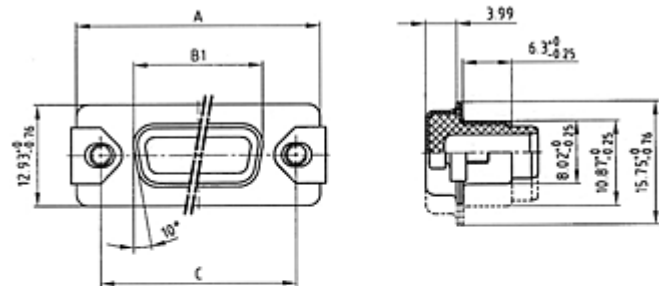
Directive 2002/95/EC  
"RoHS"  
Compliant

for socket connector

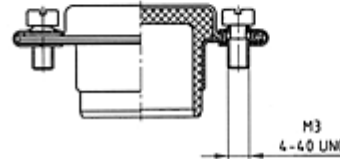
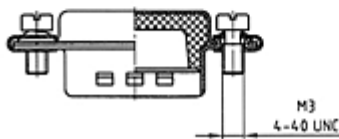


Dimensions in (---) = 50 pos.

for plug connector



Dimensions in (---) = 50 pos.

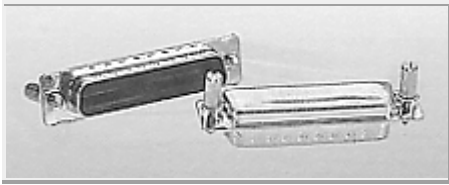


### Technical Data:

Shell material: Brass, tin plated  
Clips: Stainless steel  
Screws: Brass, nickel plated  
Gasket material: TPE

No. of pos.	A -0,76	B <sup>1</sup> -0,25	B <sup>2</sup> +0,25	C -0,30	D -0,30
9	31,19	16,46	16,79	25,00 <sup>+0,12</sup> <sub>-0,10</sub>	6,12
15	39,52	24,79	25,12	33,30 <sup>+0,15</sup>	6,12
25	53,42	38,50	38,84	47,04 <sup>+0,13</sup>	5,99
37	69,70	54,96	55,30	63,50 <sup>+0,13</sup> <sub>-0,11</sub>	5,99
50	67,31	52,55	52,68	61,10 <sup>+0,14</sup>	5,99

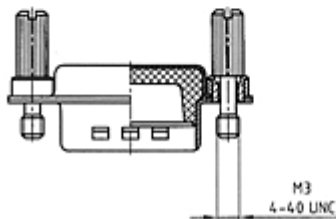
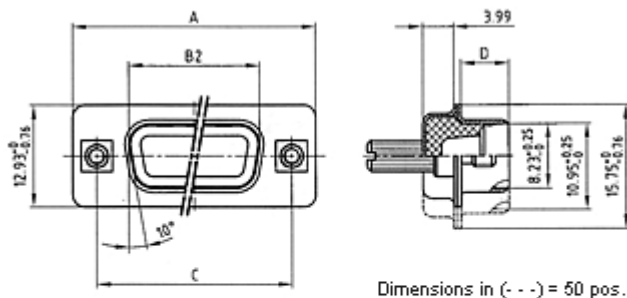
This cap provides a water resistant cover for unused connectors. Inside the cap is a sealing element which fasten when pressed tight onto the connector, either plug or socket. The attached screws on both sides of the flange will be tightened so that the sealing cap has a tight fit.



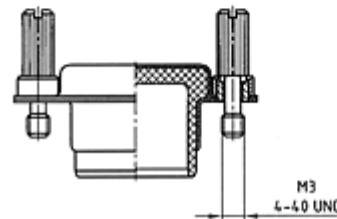
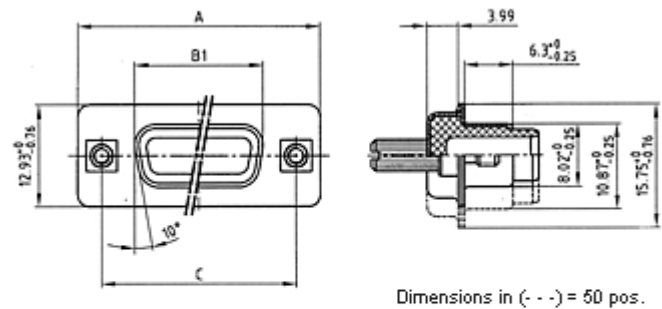
Water resistant  
shielded caps  
for EMI/RFI  
with Jack screws

Directive 2002/95/EC  
"RoHS"  
Compliant

for socket connector



for plug connector

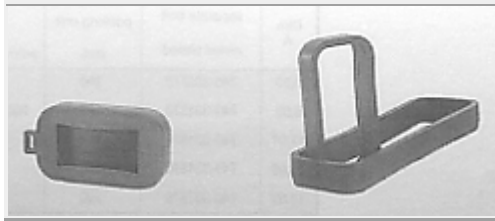


### Technical Data:

Shell material: Brass, tin plated  
Inserts: Brass, tin plated  
Jack screws: Brass, nickel plated  
Gasket material: TPE

No. of pos.	A -0,76	B 1-0,25	B 2+0,25	C	D -0,30
9	31,19	16,46	16,79	25,00 <sup>+0,12</sup> <sub>-0,10</sub>	6,12
15	39,52	24,79	25,12	33,30 <sup>+0,15</sup>	6,12
25	53,42	38,50	38,84	47,04 <sup>±0,13</sup>	5,99
37	69,70	54,96	55,30	63,50 <sup>+0,13</sup> <sub>-0,11</sub>	5,99
50	67,31	52,55	52,88	61,10 <sup>+0,14</sup>	5,99

This cap provides a water resistant cover for unused connectors. Inside the cap is a sealing element which fasten when pressed tight onto the connector, either plug or socket. The attached screws on both sides of the flange will be tightened so that the sealing cap has a tight fit.

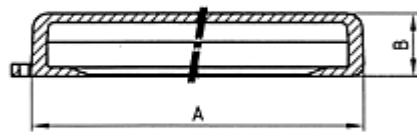


(Left)  
 Rubber boot  
 For water resistant  
 D-subminiature hoods

(Right)  
 Sealing grommet  
 for front panel mounted  
 Water resistant  
 D-Subminiature hoods

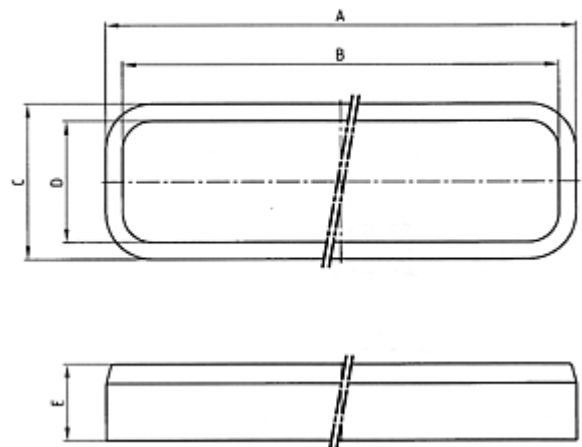


Rubber boot



**Material: TPE**

Sealing grommet



**Rubber boot**

No. of pos.	A	B	C
9	44,56	12,6	25,6
15	52,86	12,6	25,6
25	66,60	12,6	25,6
37	82,66	12,6	25,6
50	80,26	12,6	28,4

### Sealing Grommet

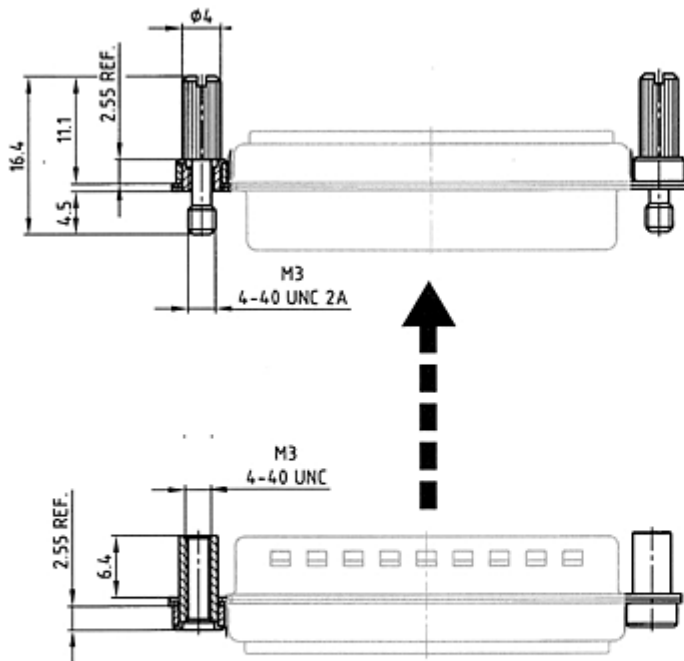
No. of pos.	A -0,2	B +0,2	C -0,2	D +0,2	E +0,5
9	38,36	33,96	20,0	15,6	9,9
15	46,66	42,26	20,0	15,6	9,9
25	60,40	56,00	20,0	15,6	9,9
37	76,86	72,46	20,0	15,6	9,9
50	74,50	70,10	20,8	18,4	9,9



Locking System  
usable for all  
D-Subminiature sizes

This system is applicable for interlocking of Male and Female connectors where no Hood needs to be used.

Directive 2002/95/EC  
„RoHS“  
Compliant



**Mounting type**

- jack screw M 3 **T3**
- jack screw 4-40 UNC **T4**

**Mounting type**

- threaded lock M 3 **T1**
- threaded lock 4-40 UNC **T2**

This system is applicable for interlocking of Male and Female connectors where no Hood needs to be used.

Part Numbers

No. of Pos.	jack screw Mounting type
4-40 INC	T4
M3	T3
No. of Pos.	threaded lock Mounting type
4-40 INC	T2
M3	T1