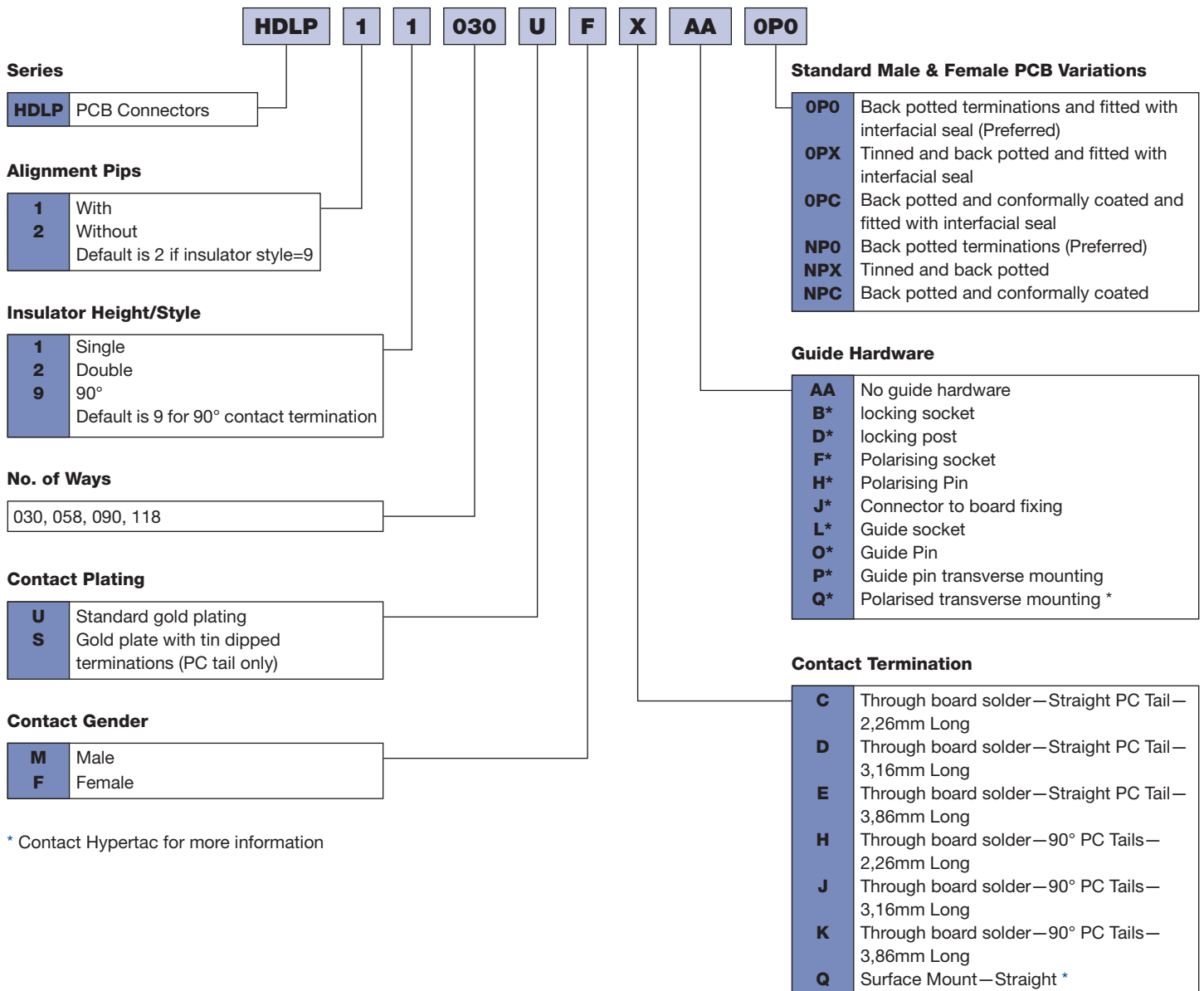


HDLP

- Four high density standard configurations from 30 to 118 ways
- High density configurations with simple mating hardware
- 2000 mating cycles
- Lightweight
- Polarised and scoop proof insulator
- Low component count
- Low insertion force
- Interfacial seal and backpotted contacts as standard
- Surface mount, plated through hole & 90° options as standard
- Pick and place compatible

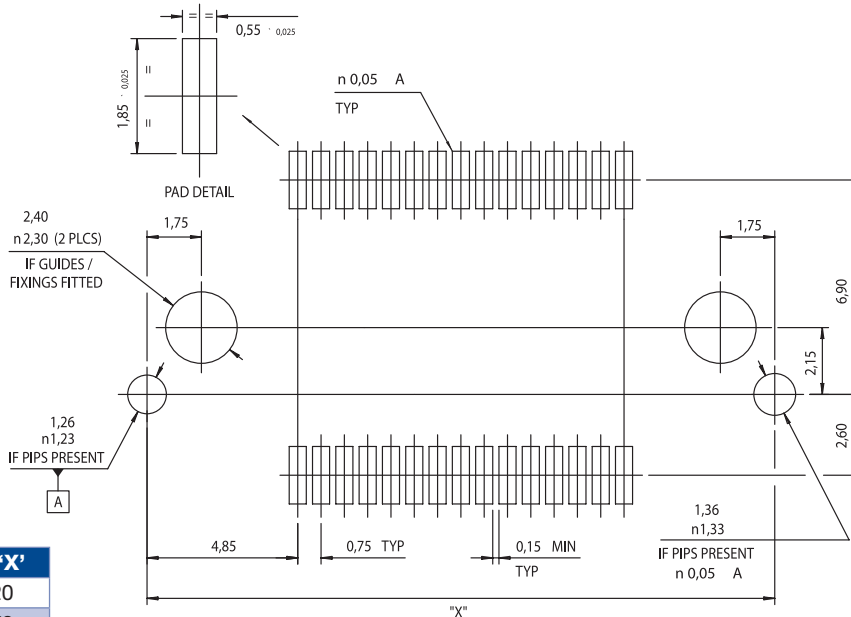
PART NUMBER CONFIGURATOR



CIRCUIT BOARD

Preparation Detail

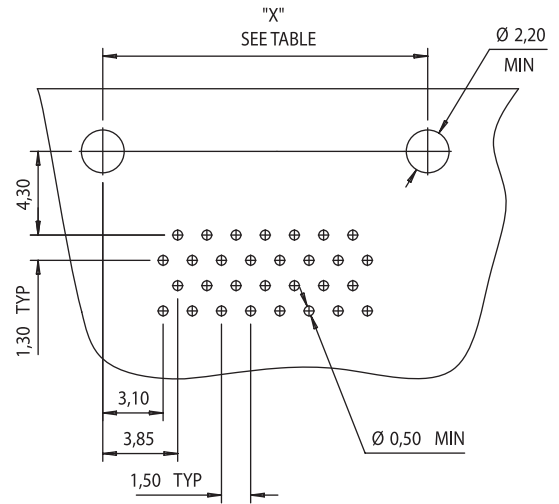
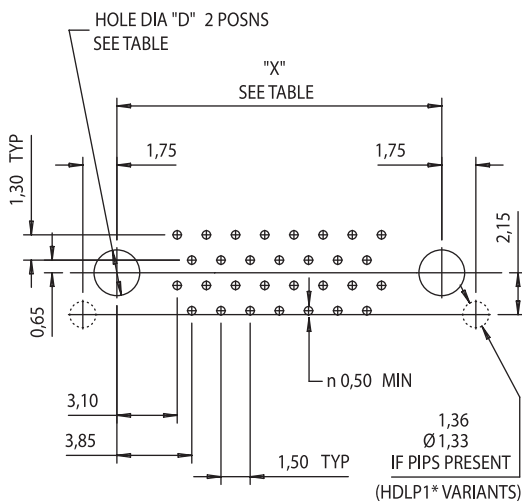
SURFACE MOUNT



Connector	Dim 'X'
30 Way	20,20
58 Way	30,70
90 Way	42,70
118 Way	53,20

VERTICAL MOUNT PC TAIL CONNECTORS

90° PC TAIL CONNECTORS



Connector	Dim 'X'
30 Way	16,70
58 Way	27,20
90 Way	39,20
118 Way	49,70

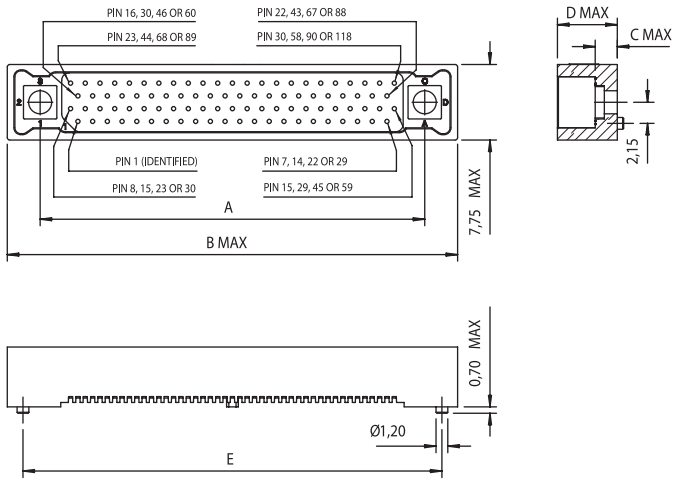
Guide Style	Dim D Min
J*	2,20
H*	2,20
F*	2,20
O*	2,20
L*	2,90
D*	2,20
B1 & BA	N/A
B2	2,90

Connector	Dim 'X'
30 Way	16,70
58 Way	27,20
90 Way	39,20
118 Way	49,70

HDLP INSULATORS

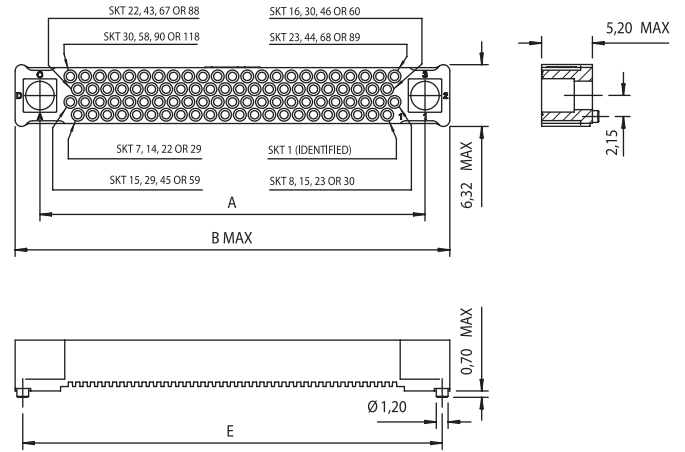
Straight Connectors

MALE (SINGLE & DOUBLE HEIGHT)



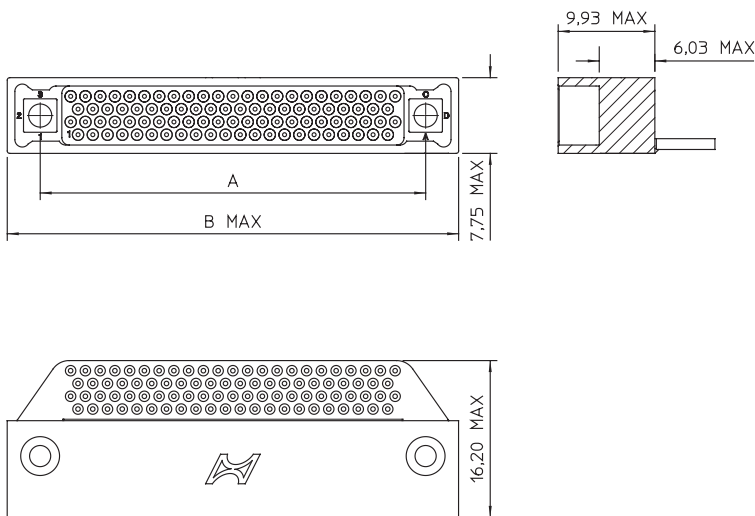
No. of Positions	30		58		90		118	
	Single	Double	Single	Double	Single	Double	Single	Double
DIM A	16,70		27,20		39,20		49,70	
DIM B	23,45		33,95		45,95		56,45	
DIM C	2,28	6,85	2,28	6,85	2,28	6,85	2,28	6,85
DIM D	6,18	10,75	6,18	10,75	6,18	10,75	6,18	10,75
DIM E	20,20		30,70		42,70		53,20	

FEMALE



No. of Positions	30	58	90	118
DIM A	16,70	27,20	39,20	49,70
DIM B	21,80	32,30	44,30	54,80
DIM E	20,20	30,70	42,70	53,20

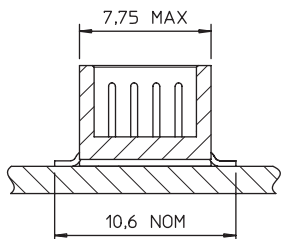
MALE 90°



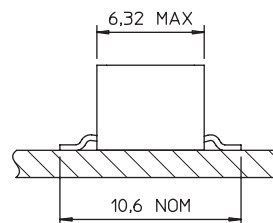
No. of Positions	30	58	90	118
DIM A	16,70	27,20	39,20	49,70
DIM B	23,45	33,95	45,95	56,45

HDLP TERMINATIONS

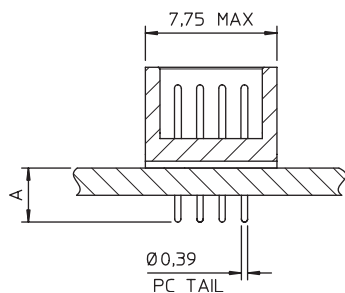
MALE SMT



FEMALE SMT

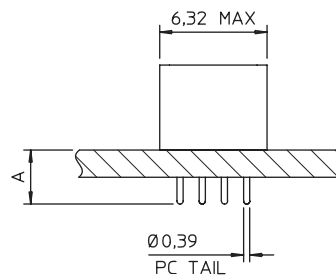


MALE VERTICAL PCB



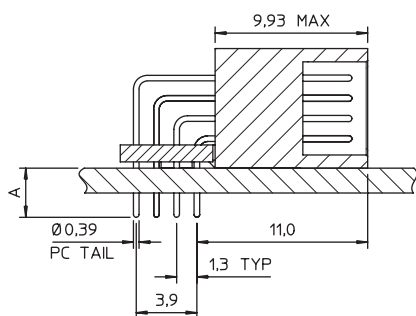
No. of Positions	Dim A
C	2,26
D	3,16
E	3,86

FEMALE VERTICAL PCB



No. of Positions	Dim A
C	2,26
D	3,16
E	3,86

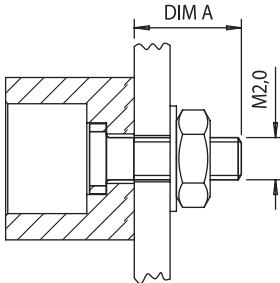
MALE 90° PCB



No. of Positions	Dim A
H	2,26
J	3,16
K	3,86

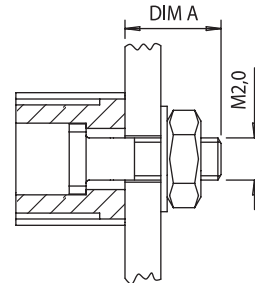
GUIDES

**MALE—FIXING SCREW
STYLE J***



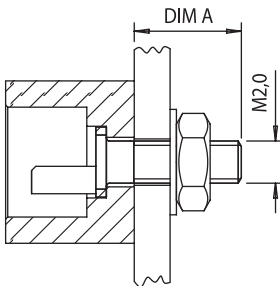
Style	Board Thickness	Dim A Max
JA	1.0–2.0mm	5.5
JB	2.1–4.0mm	7.5

**FEMALE—FIXING SCREW
STYLE J***



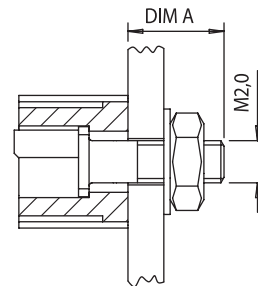
Style	Board Thickness	Dim A Max
JA	1.0–2.0mm	5.0
JB	2.1–4.0mm	7.0

**MALE—POLARISING PIN
STYLE H***



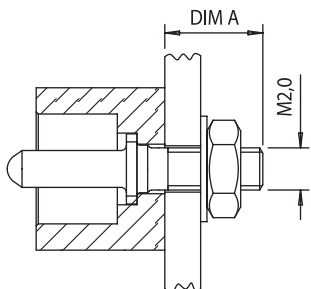
Style	Board Thickness	Dim A Max
HA	1.0–2.0mm	5.5
HB	2.1–4.0mm	7.5

**FEMALE—POLARISING PIN
STYLE F***



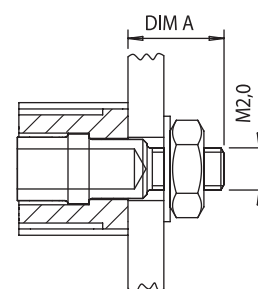
Style	Board Thickness	Dim A Max
FA	1.0–2.0mm	5.0
FB	2.1–4.0mm	7.0

**MALE—GUIDE PIN
STYLE O***



Style	Board Thickness	Dim A Max
OA	1.0–2.0mm	5.0
OB	2.1–4.0mm	7.0

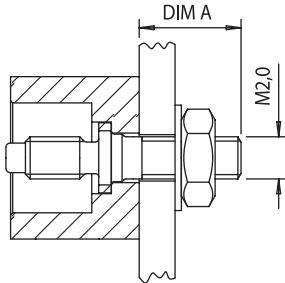
**FEMALE—GUIDE SOCKET
STYLE L***



Style	Board Thickness	Dim A Max
LA	1.5–2.0mm	5.0
LB	2.1–4.0mm	7.0

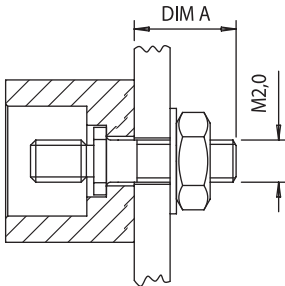
GUIDES

**MALE—FIXED JACKING POST
STYLE DA & DB**



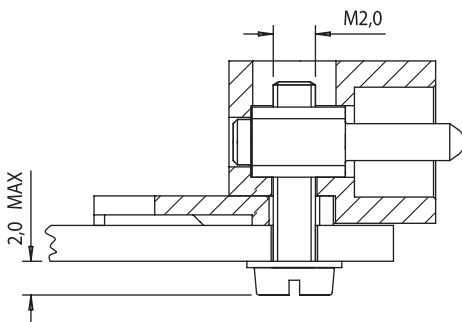
Style	Board Thickness	Dim A Max
OA	1.0–2.0mm	5.1
OB	2.1–4.0mm	7.1

**MALE—FIXED LOCKING POST
STYLE D1 & D2**



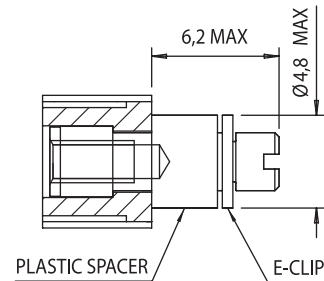
Style	Board Thickness	Dim A Max
D1	1.0–2.0mm	5.1
D2	2.1–4.0mm	7.1

**MALE 90—GUIDE PIN
STYLE P***

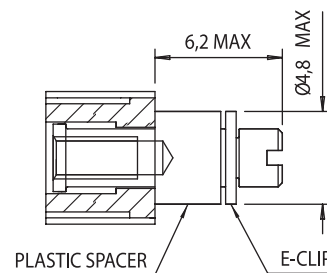


Style	Board Thickness
PA	1.0–2.0mm
PB	2.1–4.0mm

**FEMALE—ROTATING JACKING SOCKET
FREE CONNECTOR STYLE BA**



**FEMALE—ROTATING LOCKING SOCKET
FREE CONNECTOR STYLE B1**



**FEMALE—ROTATING LOCKING SOCKET
PCB MOUNTED STYLE B2**

