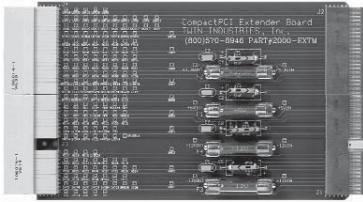


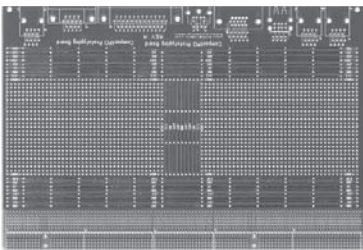
COMPACTPCI EXTENDERS-PROTOTYPING ADAPTER



P/N: **ET-2000-EXTM**

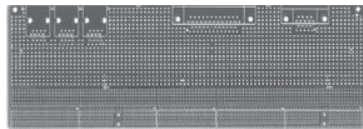
3U CompactPCI extender supports both 32 and 64 Bit transfers. Multi-layer design with full ground and power planes. All power rails fused with standard 3AG fuses.

- 3U CompactPCI extender supports both 32 and 64 bit transfers
- Multi-layer design with full ground and power planes
- Fuses easily removed for current measurements
- All signals labeled for easy scope probing
- All power rails fully de-coupled with both .1uF and 47uF capacitors
- Connectors support full shielding to maintain full CompactPCI compliance



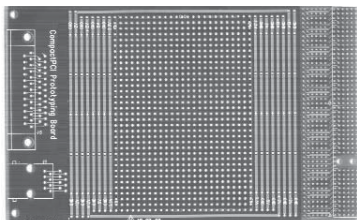
P/N: **ET-2000-100-EXTM**

CompactPCI prototyping board. 6U form factor with connector mounting areas for J1-5 CompactPCI connectors, RJ45, VGA, USB, PS/2, DB25, and DB9 connectors. Every connector pin has dedicated plated through hole for headers or wire soldering. Bus bars for all voltages and ground. Uncommitted area of 0.1" x 0.1" plated through holes.



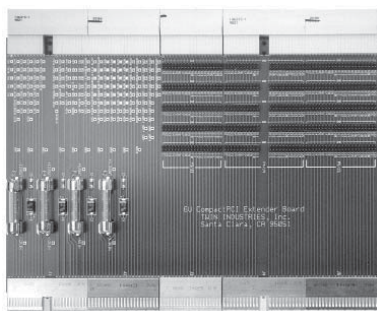
P/N: **ET-2000-80-EXTM**

6U, 80mm CompactPCI Rear I/O Protoboard. Locations for all CompactPCI pressfit connectors and other commonly used connectors. Bus bars and non-committed prototyping holes on 0.1" x 0.1" grid. Multilayer PCB, FR4 material.



P/N: **ET-2000-50-EXTM**

3U CompactPCI Protoboard. Locations for all CompactPCI pressfit connectors and other commonly used connectors. Bus bars and non-committed prototyping holes on 0.1" x 0.1" grid. Multilayer PCB, FR4 material.



P/N: **ET-2000-6U-EXTM**

6U CompactPCI extender supports both 32 and 64 Bit transfers. Multi-layer design with full ground and power planes.

- 6U CompactPCI extender supports both 32 and 64 bit transfers
- Multi-layer design with full ground and power planes
- All power rails fused with standard 3AG fuses
- Fuses easily removed for current measurements
- All signals labeled for easy scope probing
- All power rails fully decoupled with both .1uF and 47uF capacitors
- Connectors support full shielding to maintain full CompactPCI compliance
- Direct connect interface for logic analyzer

For a complete list of prototyping adapters, pricing and delivery information, please see:
Web Link: www.1800adapter.com/004