

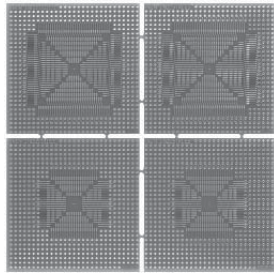
## SMT ADAPTERS/PROTOTYPING PANELS - PROTOTYPING ADAPTERS

### PLCC

SMT adapters extend the signals of the following packages to plated through holes on a 100 mil grid: PLCC package's 20, 28, 44, 64 and 84 pin packages and socket families. Ground plane on solder side. (1 EACH)

Board Size: 6.0" X 6.0"

Pad to Pad Spacing: 50 mil

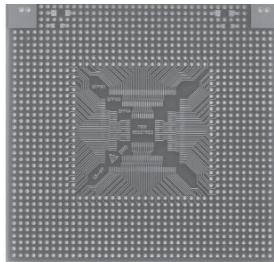


P/N: ET-8100-SMT3

### PQFP/TQFP

SMT Adapter for QFP 44, 100 & 160

Pad to Pad Spacing: 25 mil

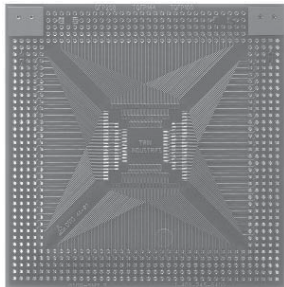


P/N: ET-8100-SMT6

### PQFP/TQFP

SMT Adapter for QFP 240 & 208, QFP 144, 128 & 100

Pad to Pad Spacing: 20 mil

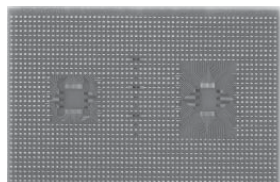


P/N: ET-8100-SMT7

### PQFP/TQFP

SMT Adapters for 80 pin QFP packages. 0.50mm Pitch. FR4 Material, Ground plane on rear side.

Board Size: 6.0" X 4.0"

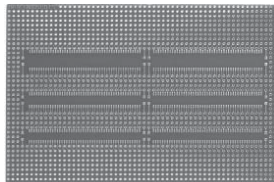


P/N: ET-8100-SMT11

### SOIC

SMT adapters extend the signals of the following packages to plated through holes on a 100 mil grid: SOIC medium, wide, metric and plastic mini-flat packages. Ground plane on solder side.

Board Size: 6.0" X 4.0"



P/N: ET-8100-SMT4

### SMT Prototyping Adapter PCBs

#### FEATURES & BENEFITS

- Access all signals via plated 2.54mm (.100") through-holes, which are numbered for easy signal location. A pin map is included
- Eliminates the need to design-in additional signal access pins/test points
- Also prevents time-consuming board revisions
- Most designs accept several pitch sizes and multiple ICs  
See our web site or call ET for detailed layout drawings
- Optional Wire Wrap Post Strips allow mounting on standard Prototyping Panels or universal PCBs
- Solder-resistant treatment helps prevent solder bridging

#### Popular Package Styles - Call for those not shown:

**SOIC** 1.27mm, 0.80mm, 0.635mm, 0.65mm, 0.50mm, & 0.40mm pitches

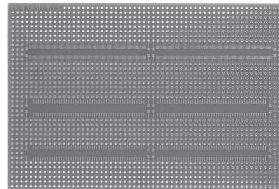
**QFP** 1.00mm, 0.80mm, 0.635mm, 0.65mm, 0.50mm pitches

**PLCC** .50" pitch

**TSOP** 0.550mm & 0.50mm pitches

**TSOPII** 1.27mm, 1.16mm, 0.80mm, 0.65mm & 0.50mm pitches

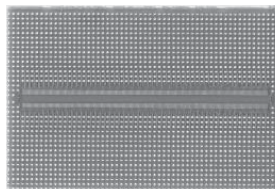
**MLF** 0.80mm, 0.65mm & 0.50mm pitches



P/N: ET-8100-SMT8



P/N: ET-8100-SMT9



P/N: ET-8100-SMT10

#### SOIC

SMT Adapter for SOIC Medium, Metric (50 mil Spacing) & Tiny (25 mil Spacing)

#### TSOP

SMT Adapter for TSOP 40, 48 & 56 (20 mil Spacing), PSOP 44 (50 mil Spacing) & SSOP 56 (30 mil Spacing)

#### TSSOP

SMT Adapters for TSSOP packages. 0.50mm Pitch. FR4 Material, Ground plane on rear side. Board Size: 6.0"x4.0"

For a complete list of prototyping adapter specifications, pricing and delivery information, please see:  
Web Link: [www.1800adapter.com/002](http://www.1800adapter.com/002)