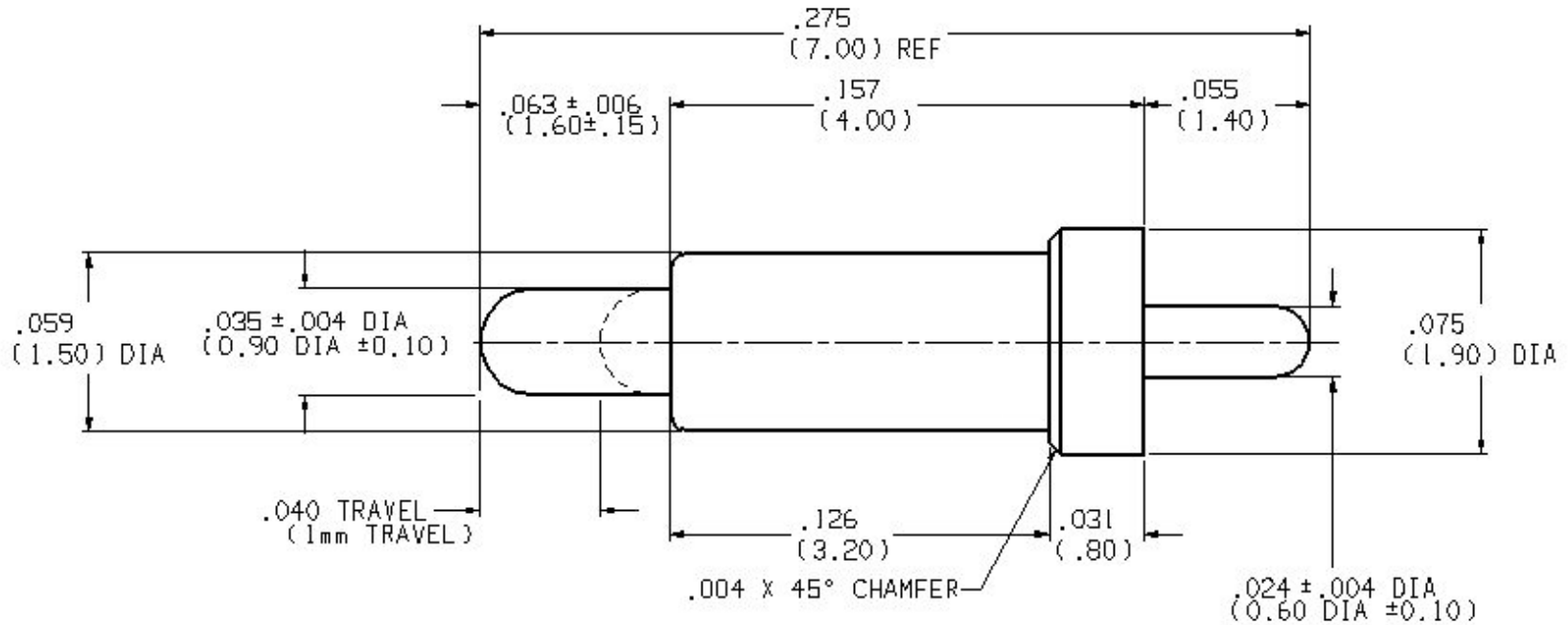


REV	DESCRIPTION	DATE	BY
A	NEW DRAWING	01/20/04	M.W.

SKT2216



9. OPERATING TEMPERATURE RANGE 0°C TO 55°C.
8. LIFE > 100,000 CYCLES.
7. CONTACT RESISTANCE < 50mΩ.
6. MAXIMUM CURRENT RATING 5 AMPS CONTINUOUS.
5. SPRING FORCE AT .040 TRAVEL - 4.50 ± 20%
4. RECOMMENDED TRAVEL = .040" (1.00 mm)
3. FULL TRAVEL = .060 (1.52mm).
2. MATERIALS:
 PLUNGER-BRASS, 10-12μin GOLD PLATED
 BARREL -BRASS, 12-15μin GOLD PLATED
 SPRING -MUSIC WIRE. GOLD PLATED
1. DIMENSIONS SHOWN ARE NOMINAL UNLESS OTHERWISE SPECIFIED.

NOTES: UNLESS OTHERWISE SPECIFIED

ALL DIMENSIONS ARE IN INCHES UNLESS OTHERWISE SPECIFIED



Emulation Technology, Inc.

VLSI and SMT ADAPTERS and ACCESSORIES

2344 Walsh Avenue, Bldg F
 Santa Clara, CA 95051

TEL: (408) 982-0660
 FAX: (408) 982-0664

SHEET: 1 OF 1	DATE: 01/20/04	REVISION:	ASSEMBLY DRAWING
CHECKED: Perry Munroe	DRAWN: Mark Wilson	ITEM: POGO-PIN-7.00-1	
DO NOT SCALE DRAWING			DESCRIPTION: POGO-PIN-7.00-1