



Snap-In Version



Description

- Panel Mount:
Snap-in, from front side
- Appliance Inlet, Pin temperature 70 °C, Protection class I
- Solder terminals or quick connect terminals

Approvals

- VDE Certificate Number: 40030341
- UL File Number: E96454

Other versions on request

- Types for enhanced glow wire test requirements acc. IEC 60695-2-12 and -13 for the use in unattended household equipment acc. IEC 60335-1
- Variant with notch for V-Lock mating Cordsets

References

- Alternative: protection class II version [4794](#)
- Alternative: version with line filter [C20F](#); [5130](#)

Weblinks

[pdf-datasheet](#), [html-datasheet](#), [General Product Information](#), [Approvals](#), [CE declaration of conformity](#), [RoHS](#), [CHINA-RoHS](#), [Mating Connectors](#), [e-Shop](#), [SCHURTER-Stock-Check](#), [Distributor-Stock-Check](#), [CAD-Drawings](#), [Accessories](#), [Wire Harnessing](#), [Detailed request for product](#)

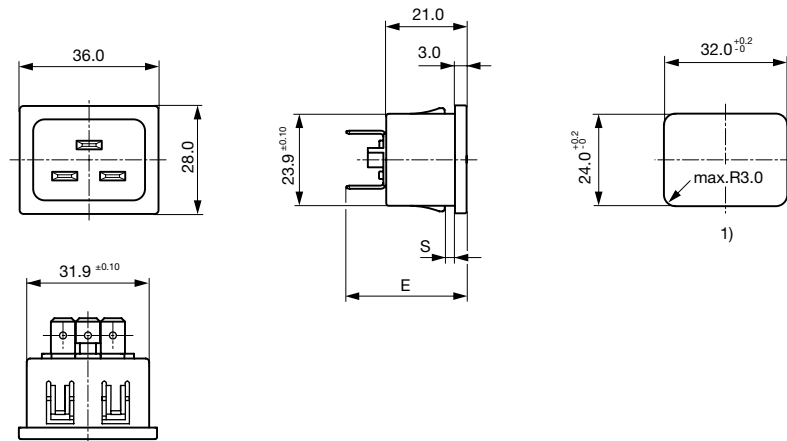
Newly available variants corresponding to V-Lock mating cordset. The connector is equipped with a notch intended for use with the latching cordset. The cord latching system prevents against accidental removal of the cordset.

Technical Data

Ratings IEC	16 A / 250 VAC; 50 Hz	Appliance Inlet	C20 acc. to IEC 60320,
Ratings UL/CSA	20 A / 250 VAC; 60 Hz		UL 498, CSA C22.2 no. 42 (for cold conditions) pin-temperature 70 °C,
Dielectric Strength	> 2 kVAC between L-N > 2 kVAC between L/N-PE (1 min/50 Hz)		16 A, Protection Class I
Allowable Operation Temp.	-25 °C to 70 °C		
Degree of Protection	from front side IP 30 acc. to IEC 60529		
Protection Class	Suitable for appliances with protection class I acc. to IEC 61140		
Terminal	Solder terminals or quick connect terminals		
Panel Thickness s	Snap-in: 1/1.2/1.5/2/2.5/3 mm		
Material: Housing	Thermoplastic, black, UL 94V-0		

Dimensions

4793



1) Panel cut-out

E: Solder terminals: 28.5 mm

E: Quick connect terminals 6.3 x 0.8 mm: 31.5 mm

Variants

Panel mounting	Panel Thickness s [mm]	Terminal	Order Number	
Snap-in	1	Quick connect terminals 6.3 x 0.8 mm	4793.3000	■
Snap-in	1.2	Quick connect terminals 6.3 x 0.8 mm	4793.8000	■
Snap-in	1.5	Quick connect terminals 6.3 x 0.8 mm	4793.4000	■
Snap-in	1.5	Quick connect terminals 6.3 x 0.8 mm	4793.4000.21	
Snap-in	2	Quick connect terminals 6.3 x 0.8 mm	4793.5000	■
Snap-in	2	Quick connect terminals 6.3 x 0.8 mm	4793.5000.21	
Snap-in	2.5	Quick connect terminals 6.3 x 0.8 mm	4793.6000	
Snap-in	3	Quick connect terminals 6.3 x 0.8 mm	4793.7000	
Snap-in	1	Solder terminals 3.8 x 0.8 mm	4793.3200	
Snap-in	1.2	Solder terminals 3.8 x 0.8 mm	4793.8200	
Snap-in	1.5	Solder terminals 3.8 x 0.8 mm	4793.4200	■
Snap-in	2	Solder terminals 3.8 x 0.8 mm	4793.5200	
Snap-in	2.5	Solder terminals 3.8 x 0.8 mm	4793.6200	
Snap-in	3	Solder terminals 3.8 x 0.8 mm	4793.7200	

■ Most Popular.

Availability for all products can be searched real-time: <http://www.schurter.com/en/Stock-Check/Stock-Check-SCHURTER>

Suffix ".21" corresponds to the version with V-Lock mating cordset. The connector is equipped with a notch intended for use with the latching cordset. The cord latching system prevents against accidental removal of the cordset.

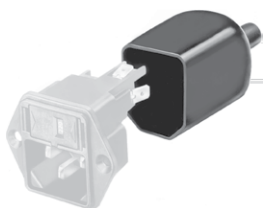
Articles for enhanced glow wire test requirements acc. IEC 60695-2-12 and -13 can be ordered with ending ".15" (xxxx.xxxx.15). They are suitable for the use in unattended household equipment acc. IEC 60335-1.

Packaging unit

100 Pcs

Accessories

Description



Assorted Covers
Rear Cover



Wire Harness
Wire harness for SCHURTER products



Cord retaining kits
Cord retaining strain relief

Mating Outlets/Connectors

Category / Description



Connector Overview complete

IEC Connector C19, Rewireable, Straight	0104U
IEC Connector C19, Rewireable, Angled	4790
IEC Connector C19, Rewireable, Straight	4795

Connector further types to 4793



Power Supply or Interconnection Cord Overview complete

Diverse Power Supply and Interconnection Cords 16 A	Cord Sets 15 A
-----------------------------------------------------	----------------

Power Supply or Interconnection Cord further types to 4793