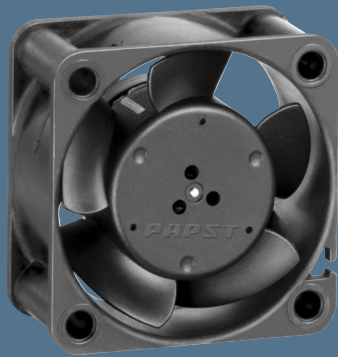


max. 13,5 m<sup>3</sup>/h

# DC axial fans

Series 400 40 x 40 x 20 mm



### Highlights:

- Compact fan with low power consumption.
- Some models suitable for use at high ambient temperatures.

### General characteristics:

- Material: fibreglass-reinforced plastic. Impeller PA, housing PBT.
- Fully integrated electronic commutation.
- Protected against reverse polarity and locking.
- Connection via single strands AWG 28, TR 64. Bared and tin-plated.
- Air exhaust over struts. Direction of rotation counter-clockwise, seen on rotor.
- Mass: 27 g.

| Nominal data                               |  | Air flow          | Air flow | Nominal voltage | Voltage range | Sound pressure level | Sound power level | Sinter sleeve bearings<br>Ball bearings | Power input | Nominal speed | Temperature range | Service life L <sub>10</sub> (20 °C)<br>ebm-papst Standard | Service life (60 °C)<br>ebm-papst Standard | Life expectancy L <sub>10</sub> <sup>Δ</sup><br>(40 °C) see P. 15 | Curve      | Specials |
|--|--|-------------------|----------|-----------------|---------------|----------------------|-------------------|---|-------------|---------------|-------------------|--|--|---|------------|----------|
| Type                                       |  | m <sup>3</sup> /h | CFM      | VDC             | VDC           | dB(A)                | Bel(A)            | □ / ■                                   | Watts       | RPM           | °C                | Hours  | Hours                                      |   | P. 110/118 |          |
| 405  |  | 10,0              | 5,9      | 5               | 4,5...5,5     | 18                   | 3,8               | □                                       | 0,9         | 6 000         | -20...+70         | 50 000 / 20 000  | 62 500                                     | 1   | /2         |          |
| 412  |  | 10,0              | 5,9      | 12              | 10...14       | 18                   | 3,8               | □                                       | 0,9         | 6 000         | -20...+70         | 50 000 / 20 000  | 62 500                                     | 1   | /2         |          |
| 412 H                                      |  | 13,5              | 7,9      | 12              | 10...14       | 29                   | 4,7               | □                                       | 1,6         | 8 100         | -20...+60         | 45 000 / 15 000  | 47 500                                     | 2   | /39        |          |
| 414  |  | 10,0              | 5,9      | 24              | 20...28       | 18                   | 3,8               | □                                       | 1,0         | 6 000         | -20...+70         | 50 000 / 20 000  | 62 500                                     | 1   | /2         |          |
| 414 H                                      |  | 13,5              | 7,9      | 24              | 20...26,5     | 29                   | 4,7               | □                                       | 1,6         | 8 100         | -20...+60         | 45 000 / 15 000  | 47 500                                     | 2   | /2         |          |
| Model with temperature range up to +85 °C. |  |                   |          |                 |               |                      |                   |   |             |               |                   |  |  |   |            |          |
| 412-099                                    |  | 10,0              | 5,9      | 12              | 10...14       | 18                   | 3,8               | □                                       | 0,8         | 6 000         | -20...+85         | 50 000 / 20 000  | 62 500                                     | 1   |            |          |

