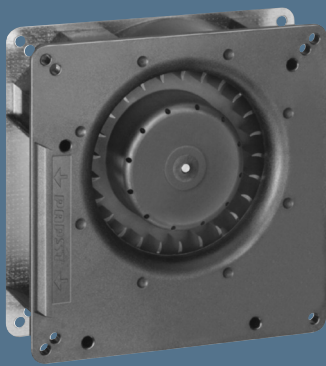


max. 55 m³/h

DC centrifugal fans

Series RG 90 N 135 x 135 x 38 mm



Highlights:

- Optional Vario-Pro: Highly adaptable software configuration of the fan enables a tailor-made solution to the specific requirements of your applications.
- Backward curved impeller.

General characteristics:

- Fibreglass-reinforced plastic scroll housing and impeller; Housing base of steel plate.
- Fully integrated electronic commutation.
- Protected against reverse polarity and locking.
- Direction of air flow: axial air intake, centrifugal air exhaust out of the outlet.
- Connection via single strands AWG 22, TR 64. Bared and tin-plated.
- 48 V Model: Flat plug 6.3 x 0.8 mm for protective earth.
- Mass: 440 g.

| Nominal data | Air flow | | Nominal voltage | Voltage range | Sound power level | Sinter sleeve bearings Ball bearings | Power input | Nominal speed | Temperature range | Service life L ₁₀ (40 °C) ebm-papst Standard | Service life L ₁₀ (T _{max}) ebm-papst Standard | Life expectancy L ₁₀ Δ (40 °C) see P. 15 | Curve | Specials |
|----------------|-------------------|------|-----------------|---------------|-------------------|---|-------------|---------------|-------------------|--|--|--|-------|----------|
| | m ³ /h | CFM | | | | | | | | | | | | |
| RG 90-18/12 N | 55 | 32,4 | 12 | 7...15 | 5,5 | ■ | 6,0 | 2 200 | -30...+75 | 62 500 / 27 500 | 112 500 | 1 | | |
| RG 90-18/14 NG | 55 | 32,4 | 24 | 12...28 | 5,5 | □ | 5,5 | 2 200 | -10...+75 | 62 500 / 27 500 | 112 500 | 1 | | |
| RG 90-18/14 N | 55 | 32,4 | 24 | 12...28 | 5,5 | ■ | 5,5 | 2 200 | -30...+75 | 62 500 / 27 500 | 112 500 | 1 | | |
| RG 90-18/18 N | 55 | 32,4 | 48 | 36...56 | 5,5 | ■ | 5,5 | 2 200 | -30...+75 | 62 500 / 27 500 | 112 500 | 1 | | |

