

Compensated High Current Choke, 1-phase



Description

- Current compensated choke
- 1-phase choke
- Flexible wire
- Flange for mounting onto printed circuit board
- Fully potted resin

Standards

- EN 60938
- IEC 60950
- EN 55011/55014
- VDE 0871/0875

Applications

- Placed in front of frequency converter
- Stepper motor drives
- UPS-systems
- Inverter

References

Weblinks

[General Product Information](#), [Approvals](#), [RoHS](#), [CHINA-RoHS](#), [e-Store](#), [SCHURTER-Stock-Check](#), [Distributor-Stock-Check](#)

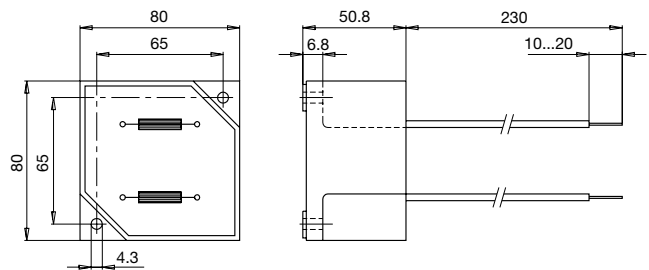
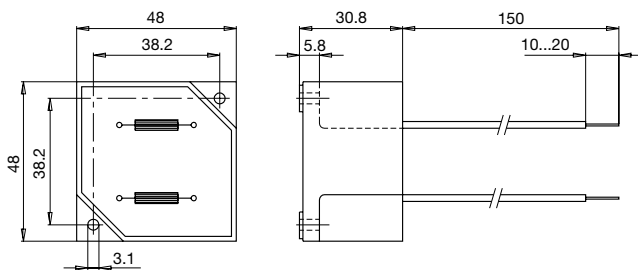
Technical Data

| | | | |
|---------------------------|-----------------------------|---------------------------|--|
| Rated voltage | up to 540 VAC | Test Voltage | 2.5 kV, 50 Hz, 2 sec, winding to winding |
| Rated voltage | up to 760 VDC | Isolation Voltage | 2.5 kV, 50 Hz, 2 sec, winding to ambient |
| Rated Current | 10 - 50 A @ Ta 40 °C | Climatic Category | 25/100/21 acc. to IEC 60068-1 |
| Rated inductance | 1.1 - 12 mH, Tol. -30% +50% | Allowable Operation Temp. | -25 °C to 100 °C |
| Power Operating Frequency | 50 - 400 Hz | | |
| Terminal technic | Flexible wire | | |
| Weight | 145 - 1865 g | | |
| Material: Housing | UL 94V-0 | | |
| Sealing Compound | UL 94V-0 | | |

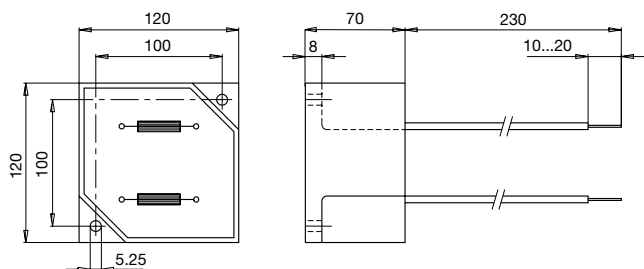
Dimensions

Case 29-2W

Case 31-2W



Case 33-2W



Variants

| I_n [A] | L_n [mH] | R_{Cu} [mΩ] | Tripped Power Dissipation [W] | f_{RES} [MHz] | Copper ϕ [mm] | Weight [g] | Housing | Packing unit [pcs.] | Order Number |
|-----------|------------|---------------|-------------------------------|-----------------|--------------------|------------|---------|---------------------|----------------|
| 10 | 5 | 18 | 3.6 | 0.35 | 1.25 | 145 | 29-2W | 6 | DKIP-0229-1005 |
| 15 | 2 | 8 | 3.6 | 0.6 | 1.6 | 145 | 29-2W | 6 | DKIP-0229-1502 |
| 20 | 1.1 | 6 | 4.8 | 2.5 | 1.8 | 145 | 29-2W | 6 | DKIP-0229-2001 |
| 10 | 12 | 40 | 8 | 0.15 | 1.25 | 477 | 31-2W | 2 | DKIP-0231-1012 |
| 15 | 5 | 17 | 7.6 | 0.33 | 1.6 | 525 | 31-2W | 2 | DKIP-0229-1505 |
| 20 | 3 | 10 | 8 | 0.55 | 1.8 | 506 | 31-2W | 2 | DKIP-0231-2003 |
| 30 | 5 | 12.5 | 22.5 | 0.26 | 2.24 | 1600 | 33-2W | 1 | DKIP-0233-3005 |
| 40 | 3 | 6 | 19.2 | 0.3 | 1.5 x 4.5 | 1830 | 33-2W | 1 | DKIP-0233-4003 |
| 50 | 2 | 5 | 25 | 0.25 | 1.5 x 4.5 | 1865 | 33-2W | 1 | DKIP-0233-5002 |